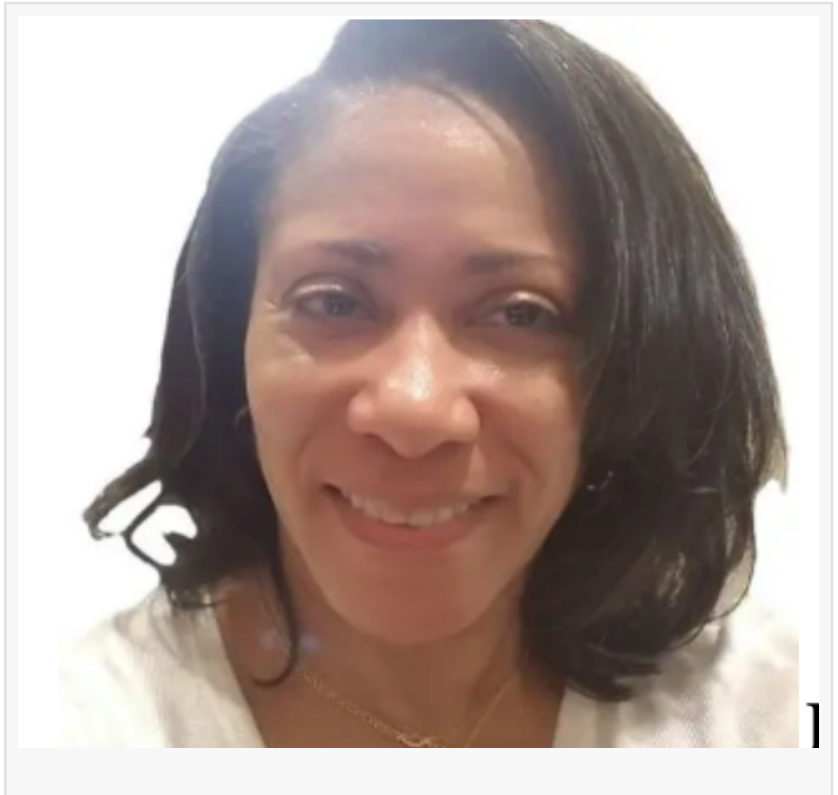


Influential Women Spotlights Katthie Marius: A Leader in Healthcare Transformation at Hartford HealthCare

HARTFORD, CT, UNITED STATES,
December 11, 2025 /

EINPresswire.com/ -- Driving Excellence and Innovation to Enhance Patient Care and Operational Efficiency

Kathie Marius is a distinguished healthcare leader with nearly three decades of service at Hartford HealthCare, where she currently excels as a Director of Strategic Integrations and Acquisitions, and previously contributed as a Strategic Integration Partner. Throughout her tenure, Katthie has demonstrated an unwavering commitment to organizational excellence—leading transformative process-improvement initiatives and cultivating a culture of



innovation to elevate both patient care and operational performance. Her talent for aligning high-level strategy with on-the-ground execution has made her a trusted, influential force in advancing the future of healthcare delivery across the organization.

A proud graduate of Post University, Katthie earned her MBA in Health Care Administration and Management, achieving an impressive 3.8 GPA. This academic foundation, paired with her vast professional experience, allows her to bring both analytical insight and a people-centered approach to her work. Katthie believes that successful transformation efforts should yield measurable results while simultaneously supporting clinicians, staff, and patients alike.

Reflecting on her journey, Katthie credits her success to the invaluable guidance of her mentors and the unwavering support of her father. “The best career advice I’ve ever received was from my father, who reminded me to always be my best self and to allow myself the space to grow,” Katthie shares. This philosophy has been a guiding principle throughout her career.

Her advice to young women entering the field is simple yet powerful: “Stay curious, keep an open mind, and always say yes to new opportunities.” She believes these qualities are essential for both personal and professional growth—especially in an industry that continues to evolve and expand.

In both her professional and personal life, Katthie holds dear the values of believing in people and having faith in the work she does. Her commitment to continuous improvement and healthcare advancement continues to influence meaningful change within Hartford HealthCare and the broader healthcare community.

Learn More about Katthie Marius:

Through her Influential Women profile, <https://influentialwomen.com/connect/kathie-marius>

Influential Women

Influential Women provides a platform where women from all backgrounds can connect, share their perspectives, and create content that empowers themselves and others. Through storytelling, thought leadership, and creative expression, Influential Women amplifies voices that inspire change.

Editorial Team
Influential Women
[email us here](#)

This press release can be viewed online at: <https://www.einpresswire.com/article/874551993>

EIN Presswire's priority is source transparency. We do not allow opaque clients, and our editors try to be careful about weeding out false and misleading content. As a user, if you see something we have missed, please do bring it to our attention. Your help is welcome. EIN Presswire, Everyone's Internet News Presswire™, tries to define some of the boundaries that are reasonable in today's world. Please see our Editorial Guidelines for more information.

© 1995-2025 Newsmatics Inc. All Right Reserved.