

GPT-5.2 API Series Available on GPT Proto Now

Developers and enterprises unlock OpenAI's GPT-5.2 with cost-effective, ultra-stable, and faster API access through unified platform

LONDON, LONDON, UNITED KINGDOM, December 15, 2025 /EINPresswire.com/ -- Revolutionary GPT-5.2 Access for Developers and Enterprises

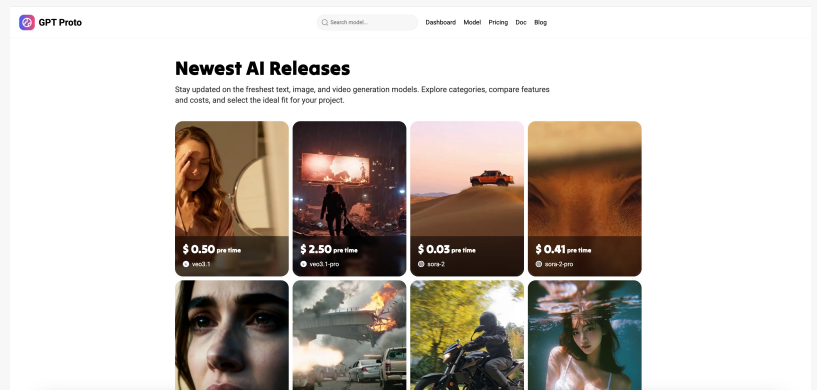
[GPT Proto](#), a leading unified AI API platform, today announced comprehensive support for OpenAI's highly anticipated GPT-5.2 API, delivering developers and enterprises an affordable, stable, and faster way to integrate next-generation artificial intelligence into production applications. This launch democratizes access to frontier AI capabilities previously restricted to well-funded organizations, setting new standards for AI infrastructure accessibility.

GPT-5.2 represents a significant advancement in large language model technology, excelling in complex reasoning, long-context understanding, and multi-domain problem-solving.

The model powers enterprise workflows across content generation, data analysis, software development, customer service automation, and advanced reasoning tasks. Through GPT Proto's optimized infrastructure, development teams can now harness GPT-5.2's capabilities at dramatically reduced costs



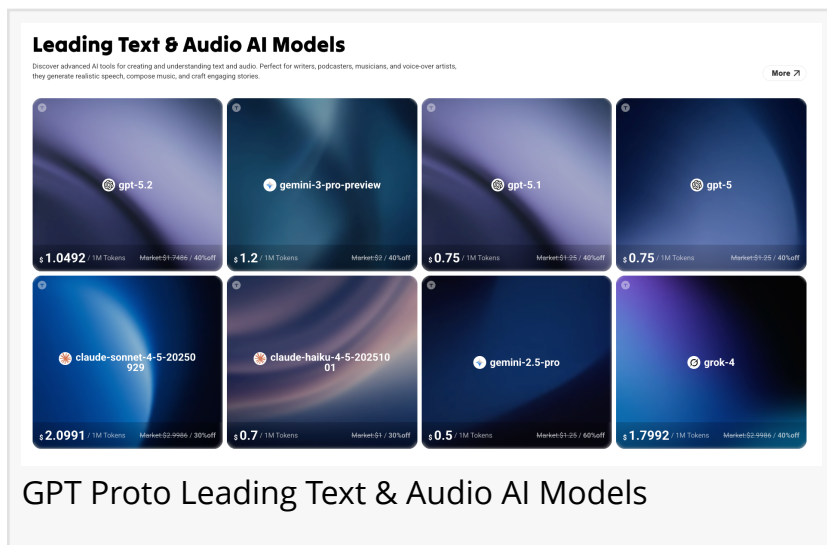
GPT Proto Logo



GPT Proto Model List

compared to direct API implementations.

Schuyler Stacy, Founder and CEO of GPT Proto, said "Our mission has always been to remove barriers to AI adoption. With GPT-5.2 now available, we're delivering the performance enterprises demand at pricing that makes sense for growth-stage teams and established organizations alike. The fragmentation of AI model access has created unnecessary friction—GPT Proto consolidates everything into one seamless platform."



Explore the Complete GPT-5.2 Model Suite

GPT Proto's GPT-5.2 API lineup provides unparalleled flexibility for diverse use cases and performance requirements. The flagship [GPT-5.2 Standard API](#) serves as the foundation for most applications, delivering exceptional reasoning capabilities and natural language understanding across general-purpose tasks.

For professionals requiring enhanced performance and extended context windows, the GPT-5.2-Pro variant optimizes throughput, accuracy, and sustained workload performance. The GPT-5.2-Chat-Latest model specializes in conversational AI and real-time dialogue applications, ensuring natural interaction patterns. For production stability and reproducibility, time-stamped versions including GPT-5.2-2025-12-11 and GPT-5.2-Pro-2025-12-11 provide version pinning and consistent behavior across deployment cycles.

All GPT-5.2 variants are accessible through a unified API platform at <https://gptproto.com/model>, streamlining integration and deployment across enterprise infrastructure without vendor fragmentation.

Four Pillars of GPT Proto's Competitive Advantage

Pricing That Powers Growth

GPT Proto's GPT-5.2 API pricing undercuts traditional providers by up to 60%, eliminating the cost barrier that previously restricted advanced AI adoption to well-funded organizations. Transparent pricing calculators and flexible usage plans scale with business needs, enabling startups and mid-market companies to deploy sophisticated AI systems without straining operational budgets. This cost efficiency directly addresses industry research showing that 78% of businesses plan to increase AI investment in 2025—when budget constraints remain a critical factor.

Unmatched Stability and Reliability

Enterprise-grade infrastructure ensures 99.9% uptime with redundant systems across multiple geographic regions. GPT Proto's proprietary load-balancing technology prevents the throttling and latency spikes competitors experience during peak usage windows, delivering consistent performance when you need it most. For mission-critical applications where AI capabilities directly impact revenue or customer experience, this reliability represents a decisive competitive advantage.

Lightning-Fast API Response Times

Optimized inference pipelines and intelligent caching reduce token generation latency by an average of 30-40% compared to industry standards. For real-time applications—from customer support chatbots to content generation platforms to advanced data analysis—GPT Proto's speed translates directly into superior user experience, faster decision-making, and operational efficiency gains.

Expert Technical Support Built-In

Unlike commodity API providers offering minimal support, GPT Proto includes dedicated technical support with rapid response times, comprehensive documentation with code examples across Python, JavaScript, Go, and other popular languages, active developer community forums, and priority support tiers for enterprise customers. Access to solution architects and integration specialists ensures your team maximizes model performance and ROI.

Unified Platform for 200+ AI Models

What truly distinguishes GPT Proto is the comprehensive multi-model ecosystem. Beyond GPT-5.2, the platform consolidates access to over 200 AI models from leading providers including Google's Gemini 3 Pro, Anthropic's Claude, Meta's Llama, Mistral AI, Stability AI, and specialized models for domain-specific applications.

The platform supports diverse AI capabilities extending far beyond text generation: advanced image synthesis and manipulation, video generation and analysis, code completion and intelligent debugging, audio processing and speech synthesis, embedding generation for semantic search, and fine-tuned models for healthcare, finance, legal, and vertical-specific applications. This "one platform" philosophy eliminates vendor fragmentation, reduces integration overhead by managing a single API key and authentication system, and simplifies billing and account management.

Developers can now prototype with GPT-5.2, generate product imagery, synthesize video content, deploy sophisticated coding assistance, and implement voice-enabled features—all without juggling multiple third-party services or managing separate documentation standards. This integrated approach accelerates development cycles and reduces operational complexity.

Enterprise Customization and White-Glove Service

Organizations with specialized requirements leverage GPT Proto's Enterprise Custom API Program, a dedicated service tier providing fine-tuning capabilities on proprietary datasets, custom model training and optimization, priority queue access and guaranteed SLAs, collaborative architecture design with GPT Proto's engineering team, and compliance-first configurations.

GPT Proto's security and compliance framework includes SOC 2 Type II certification, GDPR compliance for European customers, data encryption in transit and at rest, optional data residency controls for regulated industries, and dedicated security reviews for enterprise deployments. Volume-based discount structures and custom rate limiting ensure cost efficiency at scale.

Market Momentum and Industry Validation

The launch arrives at a pivotal inflection point in AI adoption. Recent industry data shows that 78% of enterprises plan to increase AI investment in 2025, with API-based integration remaining the preferred deployment method due to reduced infrastructure overhead and faster time-to-market. Developer surveys consistently identify cost and complexity as primary barriers to AI adoption—challenges GPT Proto directly addresses.

The multimodal revolution, exemplified by models like GPT-5.2 and Google's Gemini 3 Pro, validates the necessity of platforms supporting diverse model architectures. Organizations increasingly recognize that blanket "one model fits all" approaches underdeliver; GPT Proto's unified approach lets teams select optimal models for specific tasks, boosting accuracy while controlling spend.

With over 50,000 registered developers and 2,000+ active business accounts, GPT Proto has demonstrated product-market fit across industries including technology, finance, healthcare, education, and e-commerce. This growing community represents tangible validation of the platform's value proposition and developer experience.

Getting Started: Your Next Steps

For Developers: Ready to build with GPT-5.2? Visit <https://gptproto.com/> and create a free account today. Access full documentation with interactive tutorials, explore code examples in multiple programming languages, and connect with an active cccess full documentation with interactive tutorials, explore code examples in multiple programming languages, and connect with an active community of 50,000+ developers building the future of AI.

For Businesses and Enterprises: Contact the GPT Proto enterprise team to discuss volume discounts, custom configurations, enterprise security requirements, and dedicated support

arrangements. Our solution architects are standing by to design a tailored implementation strategy that aligns with your organizational objectives and compliance requirements.

□ Start building with GPT-5.2 on GPT Proto today

About GPT Proto

GPT Proto is a unified AI API platform democratizing access to over 200 frontier AI models through a single interface. Founded on principles of accessibility, reliability, and exceptional developer experience, GPT Proto serves thousands of customers worldwide across technology, finance, healthcare, education, and e-commerce sectors. The platform combines competitive GPT-5.2 API pricing, superior infrastructure performance, comprehensive technical support, and seamless multi-model integration to accelerate AI adoption. Learn more at <https://gptproto.com/>.

Media Contact:

Company: GPT Proto

Contact Person: Schuyler Stacy, Founder & CEO

Email: gptproto@venuslondontechnology.co.uk

Website: <https://gptproto.com/>

Country: United Kingdom

Schuyler Stacy

VENUS LONDON TECHNOLOGY LIMITED

[email us here](#)

Visit us on social media:

[LinkedIn](#)

[Facebook](#)

[X](#)

This press release can be viewed online at: <https://www.einpresswire.com/article/875466242>

EIN Presswire's priority is source transparency. We do not allow opaque clients, and our editors try to be careful about weeding out false and misleading content. As a user, if you see something we have missed, please do bring it to our attention. Your help is welcome. EIN Presswire, Everyone's Internet News Presswire™, tries to define some of the boundaries that are reasonable in today's world. Please see our Editorial Guidelines for more information.

© 1995-2025 Newsmatics Inc. All Right Reserved.