

Access Fixtures Introduces The Best LED High Bay Lights for 2026

Access Fixtures introduces the best LED high bay lights for 2026, delivering efficient, uniform, and reliable lighting for large industrial & commercial spaces.

WORCESTER, MA, UNITED STATES,
December 29, 2025 /

EINPresswire.com/ -- Access Fixtures, a leader in commercial, industrial, and sports LED lighting, announces its Best LED High Bay Lights for 2026. Lighting high-ceiling spaces efficiently requires performance, durability, and flexibility, all of which define the best LED high bay lights for 2026. From warehouses and manufacturing plants to retail stores and industrial arenas, these fixtures deliver energy-efficient, uniform illumination while reducing maintenance and operational costs.

Modern LED high bays offer customizable wattage, selectable Kelvin, advanced optics, and robust construction to meet the unique needs of large indoor environments.

What is the Best High Bay Light for 2026 that is Field Configurable?

HIIO LED High Bay Light combines versatility and precision. With field-selectable Kelvin (4000K, 4500K, 5000K) and wattage options (100, 120, 150 watts, or 135, 180, 240 watts), HIIO adapts easily to a variety of industrial, commercial, and recreational applications. Its glare-reduction polycarbonate lens ensures uniform illumination, while the 80+ CRI LEDs maintain accurate color rendering. Constructed with die-cast aluminum, HIIO is IP65 rated and includes 6KV surge protection for long-lasting reliability. This fixture allows you to easily tailor light output and color temperature on-site with a simple controller switch.



Best LED High Bay Light for 2026 - Field Configurable
- HIIO

What is the Best LED High Bay Light for 2026 that is Specification Grade?

[UPTA LED high bay light](#) is engineered for expansive spaces with significant lighting demands, especially high ceiling environments such as warehouses, gyms, and factories. Designed for ceilings as high as 60 feet, UPTA fixtures deliver up to 160 lumens per watt with anti-glare illumination. With wattage options ranging from 40 watts to a powerful 960 watts, these lights produce over 150,000 lumens per fixture. Built for durability, the UPTA boasts an EXTREME-LIFE rating of L70 @ 200,000 hours, minimizing maintenance and downtime with a robust heat sink design.



What is the Best Heat Resistant LED High Bay Light for 2026?

[HAWT LED High Bay Light](#) is designed to perform in extreme ambient temperatures, reaching up to 100°C (212°F) with a remote driver and 80°C (176°F) with an attached driver. These fixtures are ideal for demanding industrial applications such as manufacturing, metals and mining, and power generation facilities. HAWT is rated L70 @ 100,000 hours at 80°C (attached driver) or 100°C (remote driver), is vibration- and shock-resistant, IK10 impact-rated, and IP66 for wet locations. It also features 15 optical options and photometric design services to focus light exactly where it's needed.

“

Access Fixtures' 2026 high bay lineup delivers uniform, low-glare illumination with long-life performance and energy-efficient technology for modern industrial and commercial facilities.”

Steven Rothschild, CEO

What is the Best Alternative Heat-Resistant LED High Bay

Light for 2026?

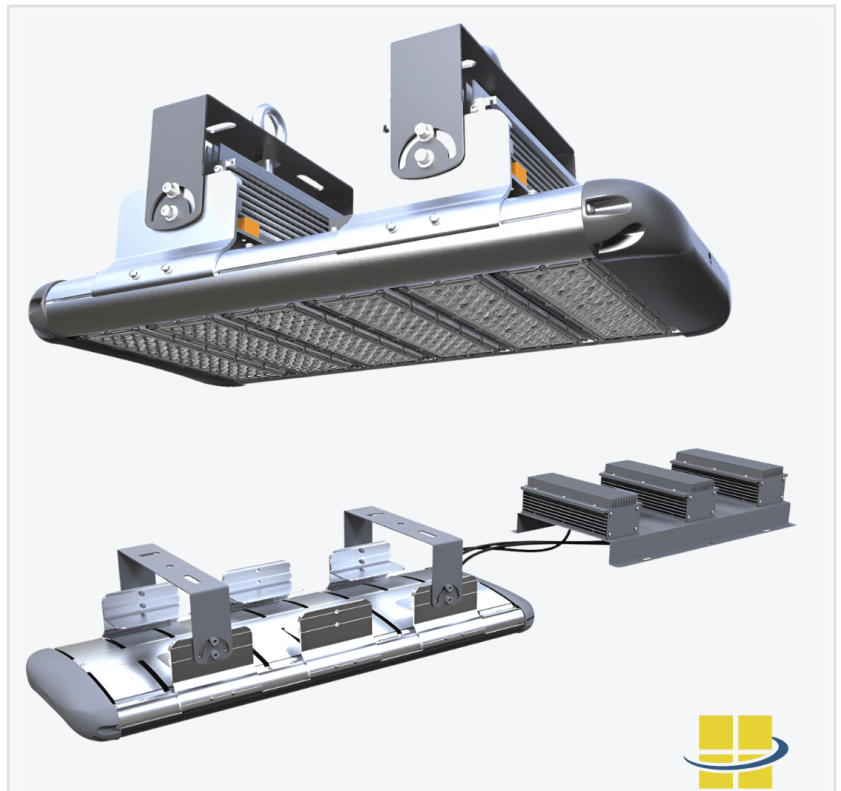
ALTA LED High Bay Light is engineered for high-temperature industrial environments, delivering efficient, high-output illumination. Built for ambient temperatures up to 80°C, ALTA features extruded aluminum housing and is 3G vibration tested, IP66-rated, and finished with corrosion-resistant powder coating. With 17 optic options, including T10D, T1S, and T5M, ALTA allows

precise light direction, reducing glare and maximizing uniformity. The removable LED driver tray ensures easy maintenance and optimal heat management.

What is the Best LED High Bay Light for 2026 for Precision, Low Glare, and Clean Tech Manufacturing?

[OTOK LED High Bay Light](#) OTOK is engineered for precision-driven clean-tech manufacturing environments, delivering uniform, low-glare illumination optimized for detail-oriented operations. With field-selectable wattage options of 135w, 155w, or 185w on the 2' model, and 200w, 230w, or 270w on the 3' model; and 270w, 340w, or 400w on the 4' model, OTOK adapts instantly to changing production requirements. Its 4000K and 5000K CCT selections ensure visual clarity across assembly lines, inspection stations, and quality-control areas. Twin matte polycarbonate lenses with $85^{\circ} \times 85^{\circ}$ precision optics minimize glare and enhance uniformity, while galvanized steel construction, 0-10V dimming, 6kV surge protection, and an L70 rating of 100,000 hours deliver long-term reliability for continuous-use facilities. Optional sensors and advanced controls support energy-efficient automation, making OTOK the best solution for clean-tech manufacturing.

"Access Fixtures' LED high bay lights are engineered with precision and advanced LED technology to deliver reliable performance and long service



Best LED High Bay Light for 2026 - Heat Resistant - HAWT



Best LED High Bay Light for 2026 - Heat Resistant (Runner-Up) - ALTA

life. Each fixture is designed to meet specific application requirements while supporting energy efficiency and sustainability,” said Access Fixtures’ CEO, Steven Rothschild.

About Access Fixtures

Access Fixtures is a leading provider of high-performance lighting solutions, committed to delivering innovative products that redefine industry standards. Focusing on sustainability, quality, and versatility, Access Fixtures manufactures various lighting fixtures designed to meet diverse needs across various applications. For more information, visit Access Fixtures at www.AccessFixtures.com.

Steven Rothschild

Access Fixtures

+1 800-468-9925

[email us here](#)

Visit us on social media:

[LinkedIn](#)

[Instagram](#)

[Facebook](#)

[YouTube](#)

[TikTok](#)

[X](#)

[Other](#)



Best LED High Bay Light for 2026 - Precision, Low Glare, Clean Tech Manufacturing Applications - OTOK

This press release can be viewed online at: <https://www.einpresswire.com/article/876327121>

EIN Presswire's priority is source transparency. We do not allow opaque clients, and our editors try to be careful about weeding out false and misleading content. As a user, if you see something we have missed, please do bring it to our attention. Your help is welcome. EIN Presswire, Everyone's Internet News Presswire™, tries to define some of the boundaries that are reasonable in today's world. Please see our Editorial Guidelines for more information.

© 1995-2025 Newsmatics Inc. All Right Reserved.