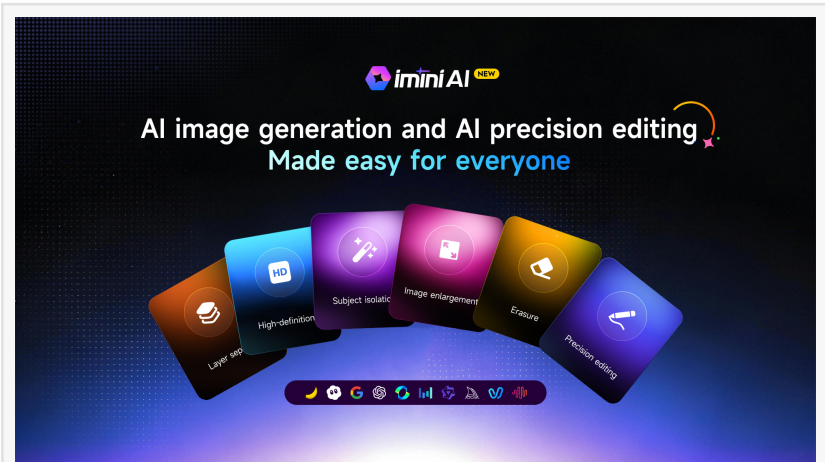


2026 Global AI Trends: iMini AI Releases Precision Image Editing Tool

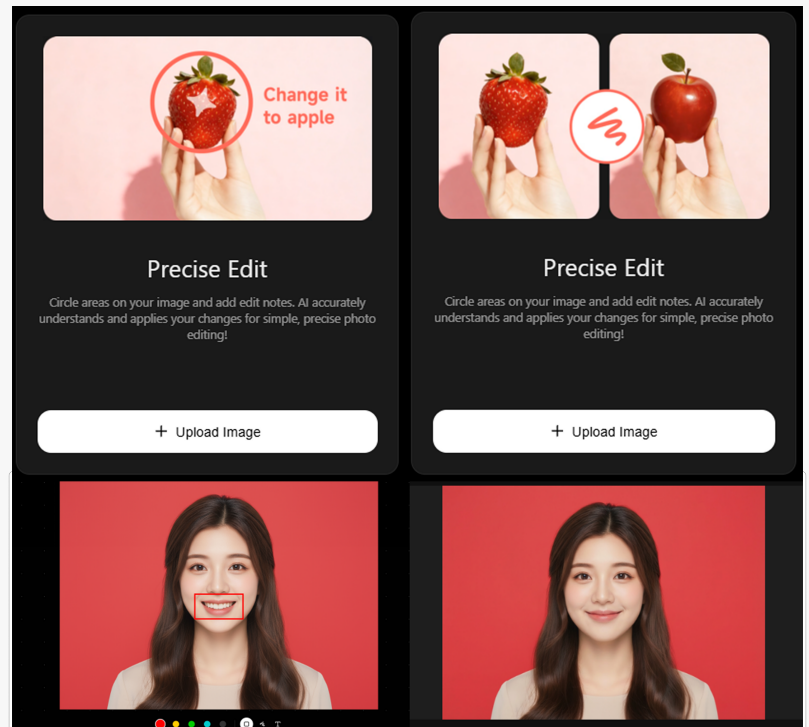
AI image generation and precision editing in one platform — empowering everyone to create stunning visuals with ease.

NY, UNITED STATES, December 29, 2025 /EINPresswire.com/ -- [AI Image Generator](#) technology is booming — but “easy to use” is still one of the industry’s biggest challenges. In recent years, AI Image Generators have rapidly spread across social media, marketing content, and personal creative projects, pushing visual demand to new highs. Yet behind the hype, many users still find themselves re-generating again and again — in a way that feels like gacha pulls, where you keep trying until something finally works. The process is time-consuming, unpredictable, and difficult to control from a cost perspective. Based on extensive user research, [iMini AI](#) set out to explore a more controllable and reliable creative path. Instead of treating AI Image Generation as a matter of luck, iMini AI began asking a different question: what if creators could actually stay in control?

Against this backdrop, iMini AI has launched its new Precision Editing Tool — designed to deliver more controllable, natural, and high-fidelity results from AI Image Generators, redefining how people interact with images and giving creators around the world an easier, more sustainable way to improve their visuals.



iMini AI Launches Precise Editing Tool

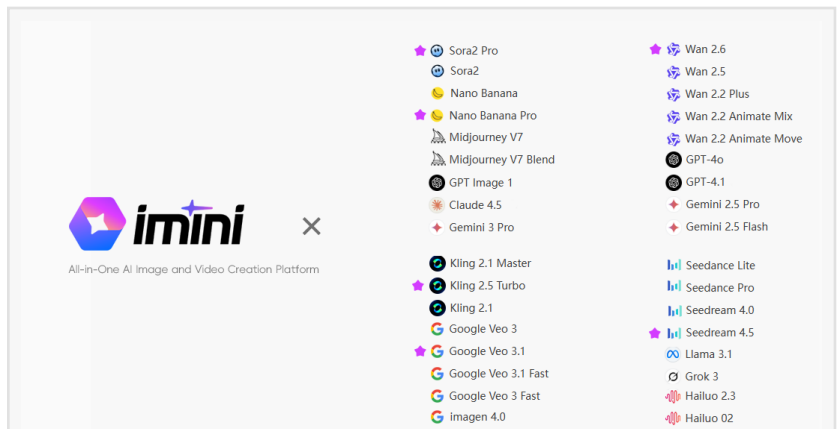


iMini AI precise edit showcase

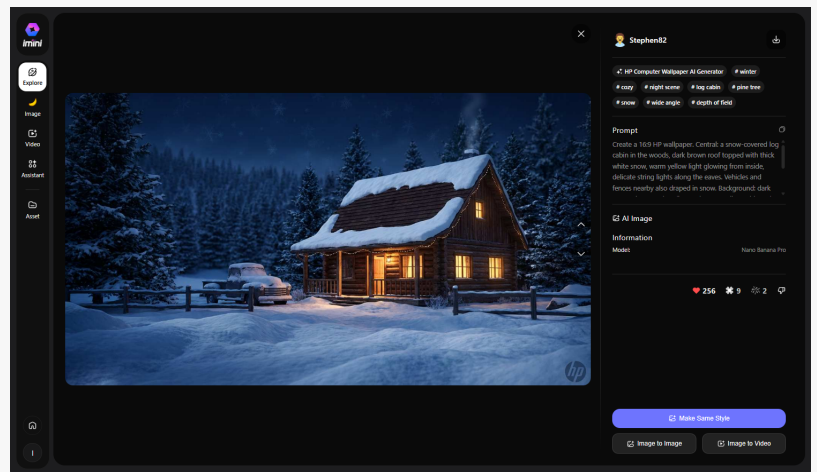
Against this backdrop, iMini AI has launched its new Precision Editing Tool — designed to deliver more controllable, natural, and high-fidelity results from AI Image Generators, redefining how people interact with images and giving creators around the world an easier, more sustainable way to improve their visuals.

iMini AI avoids the steep learning curve of professional editing software like Photoshop by deeply integrating AI Image Generator outputs with AI-powered editing. Users can fine-tune results directly during creation: simply highlight the area to adjust, describe the change (for example: “replace the text with ***” or “change this section to ***”), and the system completes the edit in one step. In practical terms, this means creators spend less time fixing mistakes and more time shaping the final look. The precise editing engine works across 3–9 intelligent layers, extracting visual elements to support background extension, object removal, subject isolation, and more — while ensuring smooth, natural transitions with the original AI-generated image. With support for 2K–4K output, visuals maintain clarity and accuracy without compression. This “local adjustment, global consistency” approach meets professional quality demands while dramatically lowering the barrier for everyday users — solving the long-standing problem of endless AI Image Generator re-runs just to achieve acceptable results.

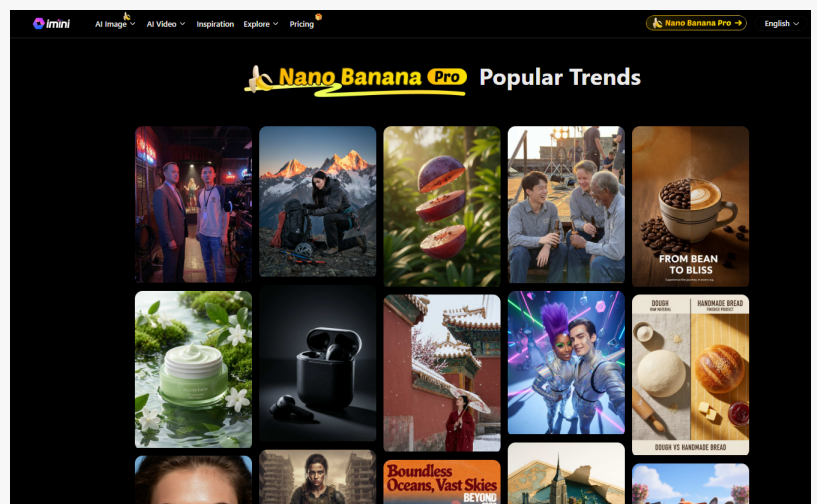
And precision only works when it sits inside a complete workflow. Unlike traditional single-model platforms, iMini AI brings multiple leading AI Image Generator models into one place — including Nano Banana Pro, Seedream 4.5, Midjourney, Veo 3.1 and more. The platform supports creators across social content, e-commerce, brand design, freelancers, and digital nomads. Instead of switching between tools, copying prompts, and re-uploading assets, users can simply log in to iMini and complete the entire journey — from idea → AI Image Generator output → optimization — in one workflow. This new precise editing upgrade completes the final “optimize” step, helping users



iMini aggregates multiple mainstream AI models.



iMiniAI Workspace + Community



iMiniAI combines the main trends of NanobananaPro

move faster with greater consistency.

Beyond tools, iMini sees creation as something users build together. That thinking led to the introduction of the Workspace + Community experience, transforming creation from one-way posting into a continuous cycle of collaboration and shared inspiration. Inside iMini, AI-generated works can be liked, saved, and built upon using open cases and reusable editing trails — turning AI Image Generator outputs into evolving creative media. Creators can learn from others, reuse templates, and gradually form workflows that suit their style.

Whether someone is a beginner exploring AI Image Generators for the first time or a professional working under tight deadlines, iMini AI aims to deliver a smooth, controllable, and trustworthy creative environment. This human-centered, full-workflow product philosophy continues to guide how the platform evolves. With this upgrade, iMini AI is tackling one of the industry's toughest challenges — the inability to accurately control generation costs. Rather than being “just another AI Image Generator,” iMini AI integrates generation and precision editing into one ecosystem, enabling anyone to create better visuals with lower cost, higher efficiency, and more confidence.

In the long run, iMini AI hopes to make high-quality visual creation feel less like chance — and more like craft, fully leveraging the power of AI Image Generators to empower creators worldwide.

LIANG ZELIU

iMini AI

+1 773-515-6023

[email us here](#)

This press release can be viewed online at: <https://www.einpresswire.com/article/878942086>

EIN Presswire's priority is source transparency. We do not allow opaque clients, and our editors try to be careful about weeding out false and misleading content. As a user, if you see something we have missed, please do bring it to our attention. Your help is welcome. EIN Presswire, Everyone's Internet News Presswire™, tries to define some of the boundaries that are reasonable in today's world. Please see our Editorial Guidelines for more information.

© 1995-2025 Newsmatics Inc. All Right Reserved.