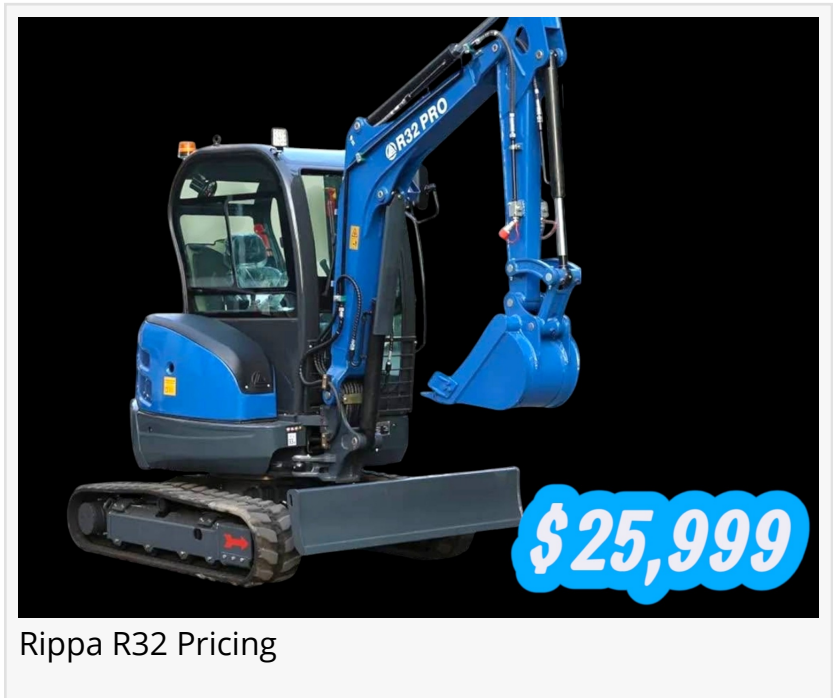


GSA Equipment Expands Heavy Equipment Inventory with Rippa R32-3 Mini Excavator

BARBERTON, OH, UNITED STATES, January 5, 2026 /EINPresswire.com/ -- GSA Equipment is proud to announce the addition of the [Rippa R32 Mini Excavator](#) to its growing lineup of [heavy-duty construction equipment](#). The 3.0-ton mini excavator represents a significant expansion into the compact excavation market, offering contractors and property owners a powerful, feature-rich solution at an accessible price point.

The [Rippa R32-3](#) combines performance and operator comfort in a compact package. Powered by a reliable 25-horsepower Kubota V1505 diesel engine, the excavator delivers professional-grade digging power while maintaining excellent fuel efficiency. The fully enclosed, air-conditioned cab ensures operator comfort during extended work sessions in any weather conditions.



Rippa R32 Pricing

“

This machine demonstrates outstanding performance and stability, making it ideal for landscaping, utility work, foundation digging, and a wide range of construction applications.”

Adam Nichols

“We’re excited to bring the Rippa R32-3 to our customers,” said Adam Nichols. “This machine demonstrates outstanding performance and stability, making it ideal for landscaping, utility work, foundation digging, and a wide range of construction applications.”

Key Features:

- Full air-conditioned operator cab
- 25hp Kubota V1505 diesel engine
- Boom swing capability for enhanced maneuverability
- Telescopic chassis for versatility
- Two-speed travel system

- Load-sensing three-pump hydraulic system
- Factory-mounted LED work lights
- 3.0-ton operating capacity

The Rippa R32-3 is now available at GSA Equipment's Barberton location for \$25,999 – a significant savings from the original price of \$34,888. Financing options are available with payments starting at just \$619 per month for qualified buyers, including programs for customers with less-than-perfect credit.

GSA Equipment offers nationwide shipping options and serves contractors and equipment users throughout Ohio, Pennsylvania, West Virginia, Indiana, and Kentucky.

For more information, specifications, or to schedule a demonstration of the Rippa R32-3 Mini Excavator, contact GSA Equipment at (330) 825-2307 or visit www.getmowers.com.

About GSA Equipment

GSA Equipment, located in Barberton, Ohio, is a premier dealer of commercial and residential lawn equipment, construction machinery, and mini trucks. With knowledgeable staff, certified technicians, and a commitment to excellence, GSA Equipment provides the experience customers want, the service they expect, and the quality they deserve.

Adam Nichols
GSA Equipment
+1 330-825-2307

[email us here](#)

Visit us on social media:

[LinkedIn](#)
[Facebook](#)
[YouTube](#)



Rippa R32



Rippa R32 Dimensions

MODEL	R32 PRO
WEIGHT	
Real Weight	6991lb
SIZE	
Total length	115in
Total width	61in
Total height	98in
Max. digging radius	190in
Max. digging depth	111in
Max. digging height	180in
Max. unloading height	125in
Maximum deflection angle	110°
DRIVE	
Engine brand	Kubota
Engine model	V1505
Maximum power	25hp
WALKING CHARACTERISTICS	
Walking speed	0-1.7mph
Climbing angle	30%

Rippa R32 Specifications

This press release can be viewed online at: <https://www.einpresswire.com/article/880565531>

EIN Presswire's priority is source transparency. We do not allow opaque clients, and our editors try to be careful about weeding out false and misleading content. As a user, if you see something we have missed, please do bring it to our attention. Your help is welcome. EIN Presswire, Everyone's Internet News Presswire™, tries to define some of the boundaries that are reasonable in today's world. Please see our Editorial Guidelines for more information.

© 1995-2026 Newsmatics Inc. All Right Reserved.