

# San Francisco Bay Coffee Produces 130 Million Compostable Pods in 2025

*California roaster processed 40.9 million pounds of coffee while training over 11,000 farmers in sustainability practices*

SAN FRANCISCO, CA, UNITED STATES, January 7, 2026 /EINPresswire.com/ -- San Francisco Bay Coffee has produced 130 million commercially [compostable single-serve coffee pods](#) this year, representing a significant portion of the company's total output of 40.9 million pounds of roasted coffee, enough to fill approximately 250 Olympic-sized swimming pools.

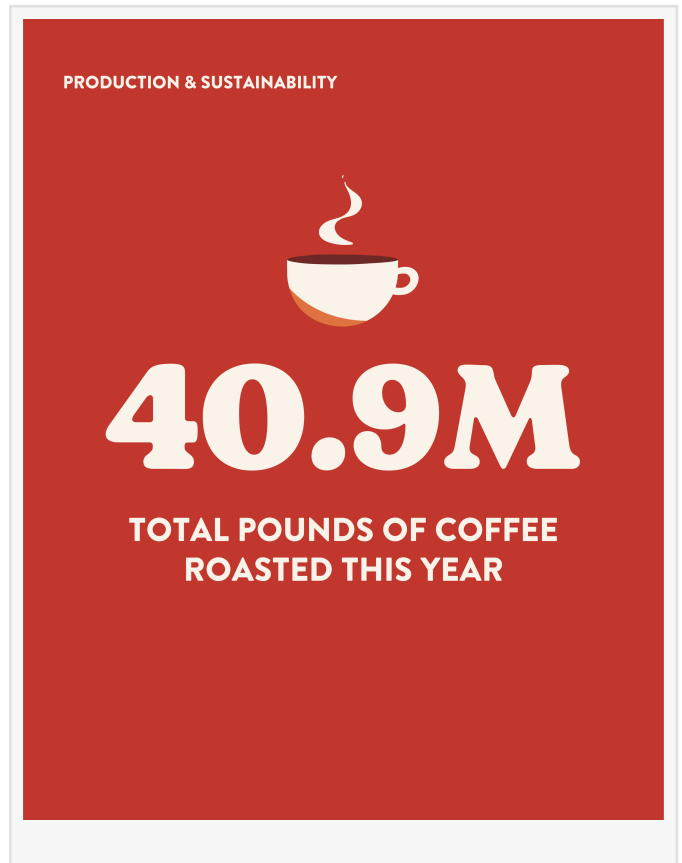
The company's OneCUP pods are manufactured from plant-based materials. Unlike conventional single-serve pods made from petrochemical plastics, these pods carry BPI certification for commercial composting, breaking down within 84 days under industrial composting conditions.

Consumer data reveals [French Roast](#) as the year's top-selling blend, followed by Organic Rainforest Blend and Fog Chaser. Dark roast profiles dominated sales across all varieties.

The production milestone coincides with the expansion of the company's Café Rentable Farmer training program, which provided education to 11,087 coffee farmers this year. The initiative focuses on [sustainable farming practices](#) at the coffee's origin.

Single-serve coffee pods have faced scrutiny for contributing to plastic waste in landfills and oceans. The plant-based alternative requires commercial composting facilities, which vary by region. The company advises consumers to verify the capabilities of local facilities, as not all municipal composting programs accept BPI-certified materials.

The pods contain no major allergens and are made from food-grade materials approved for use with consumables. Both the pods and their packaging bags meet commercial composting



standards, though they are suitable for home composting or traditional recycling systems.

The shift toward plant-based pod production reflects broader pressure on the single-serve coffee sector to address environmental concerns while maintaining the convenience that has driven category growth. Commercial composting infrastructure remains unevenly distributed, potentially limiting the ecological benefit in areas without access to certified facilities.

#### About the Company:

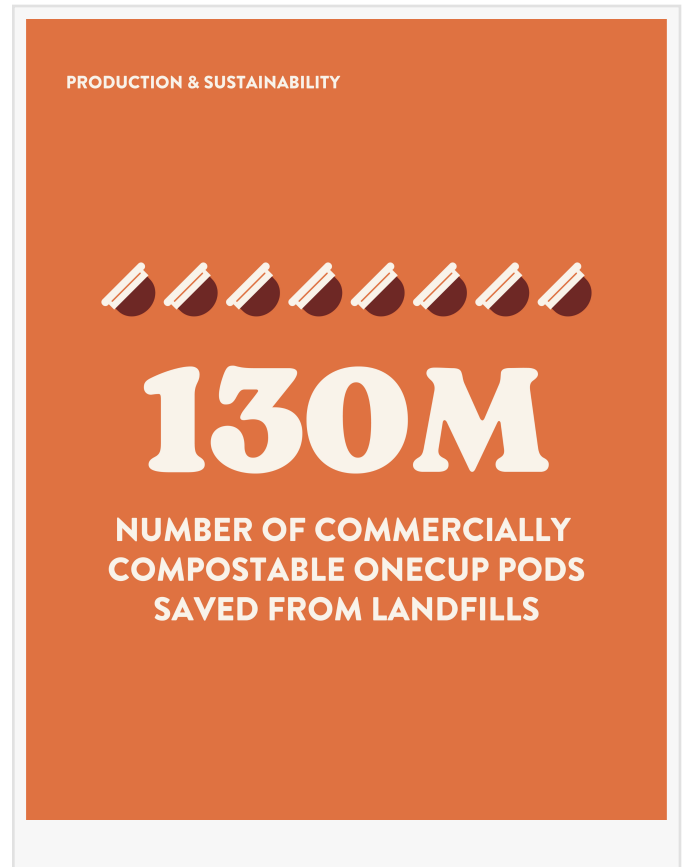
Founded by Jon and Barbara Rogers in 1979, San Francisco Bay Coffee is one of the premier coffee makers in California and around the world. San Francisco Bay Coffee boasts over 30 million pounds of coffee annually and believes that everyone who touches the coffee, from the plants to roasted beans to the steaming cup, should benefit from the process. Socially and environmentally conscious, San Francisco Bay Coffee is committed to buying the majority of coffee directly from the 32,000 collaborating farmers to ensure fair pay. Moreover, San Francisco Bay Coffee has built 63 schools, 1,700 housing complexes, and numerous medical and dental centers in partnership with local communities. In 40 years of producing exceptional coffee, San Francisco Bay Coffee has donated more than 10 million coffee plants to coffee-providing farmers. To San Francisco Bay Coffee, everyone is family and should be treated as such!

Sarah Cress

San Francisco Bay Coffee

+1 800-829-1300

[email us here](#)



This press release can be viewed online at: <https://www.einpresswire.com/article/881065610>

EIN Presswire's priority is source transparency. We do not allow opaque clients, and our editors try to be careful about weeding out false and misleading content. As a user, if you see something we have missed, please do bring it to our attention. Your help is welcome. EIN Presswire, Everyone's Internet News Presswire™, tries to define some of the boundaries that are reasonable in today's world. Please see our Editorial Guidelines for more information.

© 1995-2026 Newsmatics Inc. All Right Reserved.