

Genesis Exotic Transport Details Industry-Standard Securement Standards for Enclosed Luxury and Exotic Vehicle Transport

Genesis Exotic Transport Releases Industry-Standard Protocols for Enclosed Vehicle Shipping

TAMPA, FL, UNITED STATES, January 13, 2026 /EINPresswire.com/ -- As demand for enclosed auto transport continues to rise among luxury, exotic, and high-value vehicle owners, Genesis Exotic Transport is outlining the securement standards it uses to protect vehicles during transit and reduce the risk of transport-related damage.

Enclosed vehicle transport is commonly selected by owners of exotic cars, luxury vehicles, collector automobiles, and performance models due to the added protection it provides from weather, road debris, and environmental exposure. However, according to industry professionals, the method used to physically secure a vehicle inside an enclosed carrier plays a critical role in preserving the condition, alignment, and structural integrity of the vehicle during transport.

Genesis Exotic Transport utilizes E-track over-the-tire securement systems on all vehicles the company transports, securing each vehicle at all four tires. This approach ensures that no straps, chains, or hardware come into contact with painted surfaces, rims, suspension components, or frame rails.

Why Vehicle Securement Methods Matter in Enclosed Auto Transport

Vehicle securement is one of the most frequently overlooked aspects of auto transport by



Edwin Verdung - Owner, Operator of Genesis Exotic Transport

consumers searching online for terms such as “enclosed car shipping,” “luxury car transport,” “exotic car hauling,” and “[safe auto transport services](#).” While many transport companies advertise enclosed carriers, fewer disclose how vehicles are actually restrained during transit.

Improper securement can lead to a range of issues, including cosmetic damage, mechanical stress, and alignment problems.

Common industry practices that present risk include:

1. Strapping through wheel rims, which can cause chafing, scratching, or bending.
2. Using chains or rigid tie-downs attached to frame rails, which can lead to structural stress or deformation.
3. Securing vehicles by suspension components, potentially affecting alignment and wear
4. Reusing worn or outdated straps that may stretch or fail under load

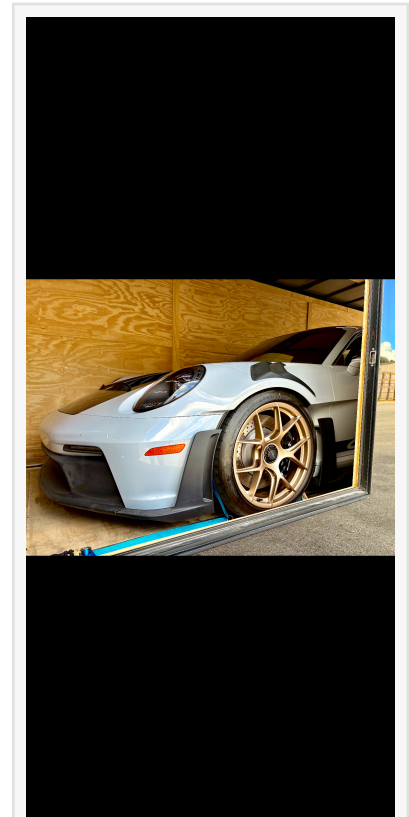
Genesis Exotic Transport’s E-track over-the-tire method is designed to avoid these risks by distributing load forces evenly across the tires, which are engineered to handle movement, weight, and tension.

Understanding E-Track Over-the-Tire Securement

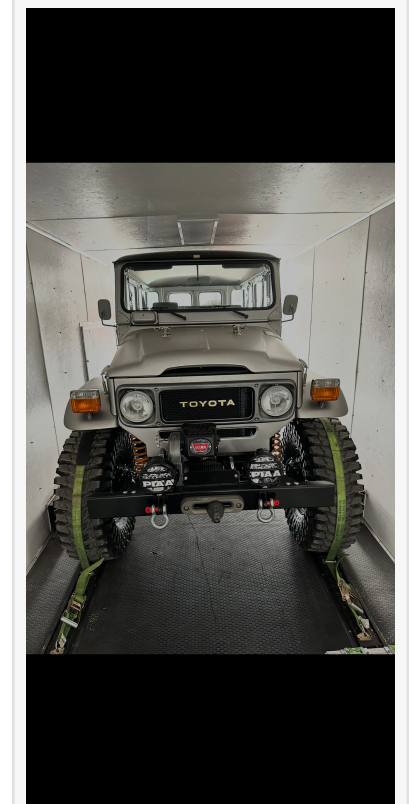
E-track systems are commonly used in regulated transport environments because they allow precise placement and tension control. When paired with over-the-tire straps, the system immobilizes the vehicle without placing stress on vulnerable components.

Each vehicle transported by Genesis Exotic Transport is secured at all four tires, preventing forward, backward, and lateral movement during transport. By ensuring that only the rubber tires make contact with the securement system, the risk of cosmetic or mechanical damage is significantly reduced.

This approach aligns with manufacturer handling considerations for many luxury and performance vehicles, which often specify avoiding contact with suspension geometry, underbody components, or aerodynamic elements during loading and transport.



Porsche Strapped In For Enclosed Transport



Toyota SUV Strapped In For Enclosed Transport

Common Consumer Questions About Enclosed Car Securement

Consumers researching “how to ship a luxury car safely” or “[best enclosed auto transport company](#)” frequently ask similar questions:

Does enclosed transport automatically mean safer transport? Not necessarily. While enclosed trailers provide environmental protection, securement methods inside the trailer determine how well the vehicle is protected from movement-related damage.

Can improper securement affect vehicle alignment?

Yes. Securing a vehicle by suspension components or uneven tie-down points can place stress on alignment systems, bushings, and suspension geometry, particularly during long-distance transport.

Are wheel straps safe for exotic and luxury cars?

Over-the-tire wheel straps are widely considered safer than rim straps or chains because they avoid direct contact with sensitive components.

Genesis Exotic Transport addresses these concerns by applying the same securement standard to every vehicle, regardless of distance, value, or transport type.

Enclosed Transport for Exotic, Luxury, and Collector Vehicles

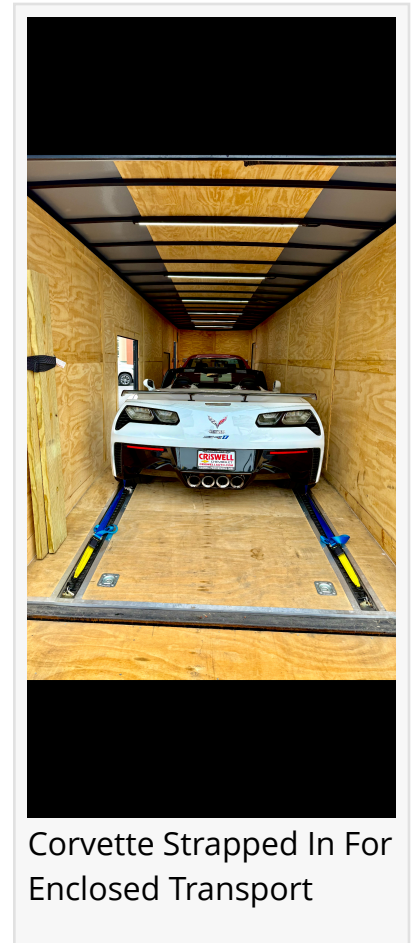
The enclosed auto transport market has grown as vehicle values increase and owners seek additional protection during shipping. Searches for “exotic car shipping,” “luxury vehicle transport services,” and “collector car transport” have risen steadily as more consumers purchase vehicles across state lines or require relocation services.

Vehicles commonly transported using enclosed carriers include:

1. Exotic and Supercars
2. Luxury Sedans and SUVs
3. Classic and Collector Vehicles
4. High-performance and Modified Cars
5. Limited-production and Specialty Models

Genesis Exotic Transport applies identical securement procedures across all enclosed transports, ensuring consistency and reducing variability in handling practices.

Risk Reduction Through Proper Load Securement



Corvette Strapped In For Enclosed Transport

From an industry perspective, many transport-related claims stem not from accidents, but from improper loading and securement. Movement inside a trailer during braking, acceleration, or cornering can cause damage even when the trailer itself remains intact.

By securing vehicles at the tires and using properly rated E-track systems, Genesis Exotic Transport minimizes internal movement and load shift. This reduces risk during routine driving conditions such as highway travel, elevation changes, and extended transport routes.

The company also utilizes new securement equipment, avoiding the use of worn or compromised straps that may degrade over time.

Industry Compliance and Best Practices

Vehicle transport companies operating legally within the United States must comply with Federal Motor Carrier Safety Administration (FMCSA) and Department of Transportation (DOT) regulations. While these agencies set baseline requirements, securement methods can vary widely among carriers.

Genesis Exotic Transport adheres to securement practices that prioritize manufacturer considerations, vehicle integrity, and consistency across all transports. The company applies these standards across enclosed, open carrier, and specialty transport scenarios.

Consumer Education: What to Ask an Auto Transport Company

For consumers researching "[reliable car shipping companies](#)" or "best enclosed auto transport services," understanding securement practices can help differentiate providers.

Questions consumers may consider asking include:

1. How is the vehicle secured inside the trailer?
2. Are straps placed over the tires or attached to the vehicle structure?
3. Is new or inspected securement equipment used?
4. Are all four tires secured?
5. Can the company explain its securement process clearly?

Transparent answers to these questions can help vehicle owners make informed decisions when selecting a transport provider.

Consistency Across Every Transport

Genesis Exotic Transport applies the same securement methodology to every vehicle it transports. The company does not vary its process based on vehicle type, distance, or scheduling constraints.

This consistency supports operational reliability and helps ensure that vehicles arrive in the same condition in which they were loaded.

Enclosed Auto Transport as Part of a Larger Logistics Process

Securement is one component of a broader logistics framework that includes loading procedures, route planning, communication, insurance, and compliance. While enclosed trailers provide physical protection, proper securement ensures that protection extends throughout the entire journey.

As consumer awareness grows around topics such as “safe vehicle transport,” “auto transport insurance,” and “licensed car shipping companies,” industry education continues to play a role in shaping expectations and best practices.

When someone trusts us with a luxury or exotic vehicle, they’re trusting us with something that often can’t be replaced easily,” said Edwin Verdung, Owner and Operator of Genesis Exotic Transport. “That’s why we secure every vehicle by the tires - not the rims, suspension, or frame - and why over-the-tire E-track securement is our standard. Proper securement isn’t an option in this industry. It’s a responsibility.

About Genesis Exotic Transport

Genesis Exotic Transport is a vehicle and marine transport company specializing in enclosed auto transport, luxury and exotic vehicle shipping, and compliant transport solutions. The company focuses on securement standards, transparency, and operational consistency across all transports.

Justin Miller

Genesis Exotic Transport

[email us here](#)

Visit us on social media:

[Instagram](#)

[Facebook](#)

[YouTube](#)

This press release can be viewed online at: <https://www.einpresswire.com/article/882203710>

EIN Presswire's priority is source transparency. We do not allow opaque clients, and our editors try to be careful about weeding out false and misleading content. As a user, if you see something we have missed, please do bring it to our attention. Your help is welcome. EIN Presswire, Everyone's Internet News Presswire™, tries to define some of the boundaries that are reasonable in today's world. Please see our Editorial Guidelines for more information.

© 1995-2026 Newsmatics Inc. All Right Reserved.