

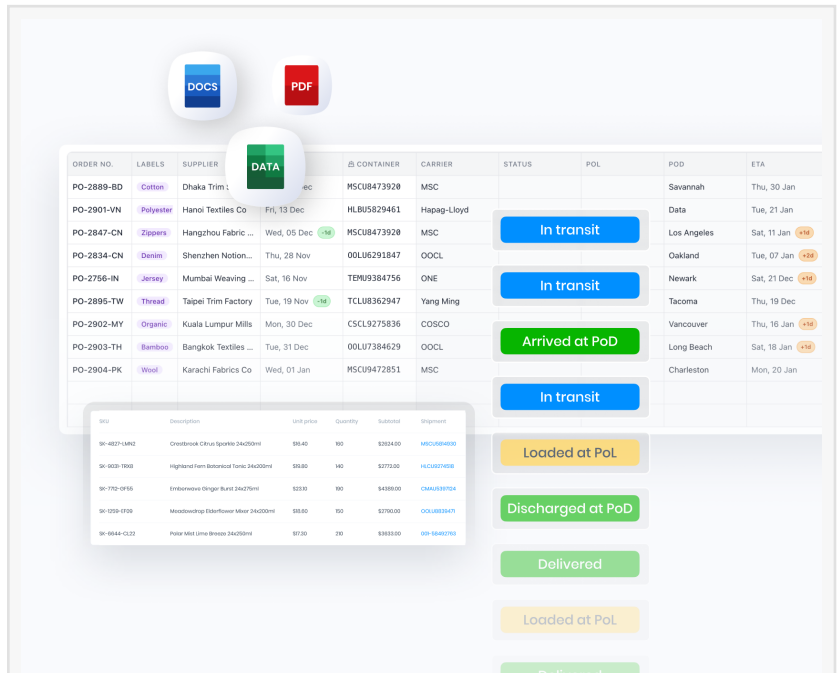
Westmill cuts logistics bottlenecks by unifying supply chain data with Beacon

Single workspace replaces multiple daily reports, spreadsheets, and carrier logins – saving hours each week and improving internal communication

LONDON, UNITED KINGDOM, January 13, 2026 /EINPresswire.com/ -- [Westmill Foods](#), one of Europe's largest specialist food companies, has eliminated two long-standing bottlenecks in its logistics workflow: scattered shipment information and time-consuming invoice verification, by adopting [Beacon](#)'s AI supply chain workspace.

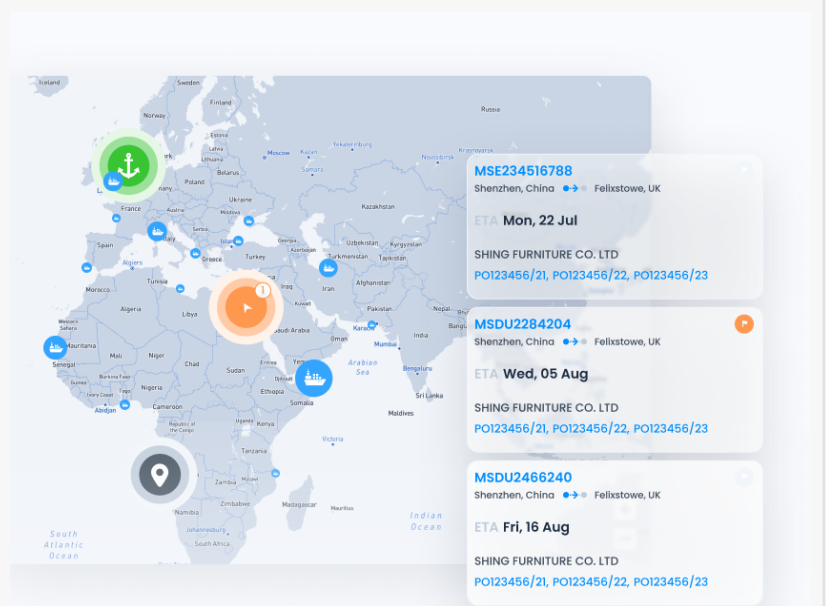
Previously, Westmill's logistics team had to piece together shipment data from multiple daily reports sent by freight forwarders, along with information buried in various carrier portals and spreadsheets. This fragmented setup forced the team to spend valuable time each morning hunting for the details they needed.

Invoice verification faced a similar challenge. Matching purchase order numbers to carriers, routes, and dates required cross-checking multiple sources, slowing approvals and diverting time away from more strategic work.



ORDER NO.	LABELS	SUPPLIER	DATE	CONTAINER	CARRIER	STATUS	POL	POD	ETA
PO-2889-BD	Cotton	Dhaka Trim	Fri, 13 Dec	MSCU8473928	MSC	In transit		Savannah	Thu, 30 Jan
PO-2901-VN	Polyester	Hanoi Textiles Co	Wed, 05 Dec	HLB05829461	Hapag-Lloyd	In transit		Data	Tue, 21 Jan
PO-2847-CN	Zipper	Hangzhou Fabric	Thu, 28 Nov	MSCU8473928	MSC	In transit		Los Angeles	Sat, 11 Jan
PO-2834-CN	Denim	Shenzhen Notion	Tue, 19 Nov	00LU6291847	OOCL	In transit		Oakland	Tue, 07 Jan
PO-2756-IN	Jersey	Mumbai Weaving	Tue, 19 Nov	TEMU9384756	ONE	In transit		Newark	Sat, 21 Dec
PO-2895-TW	Thread	Taipei Trim Factory	Mon, 31 Dec	TCLU8362947	Yang Ming	Arrived at PoD		Tacoma	Thu, 19 Dec
PO-2902-MY	Organic	Kuala Lumpur Mills	Tue, 01 Jan	CSCL9275836	COSCO	In transit		Vancouver	Thu, 16 Jan
PO-2903-TH	Bamboo	Bangkok Textiles	Wed, 01 Jan	00LU7384629	OOCL	In transit		Long Beach	Sat, 18 Jan
PO-2904-PK	Wool	Karachi Fabrics Co		MSCU9472851	MSC	In transit		Charleston	Mon, 20 Jan

Beacon Table



Beacon Maps

To address this, Westmill implemented Beacon to consolidate shipment information into a single, easy-to-use, customisable workspace. With Beacon, the team can now track shipments instantly – by container number, purchase order number, or any other reference – without needing to open multiple reports or log into different carrier systems.

Westmill has also created a series of Live Boards, giving each business unit a tailored view of the shipments relevant to them. Instead of requesting updates or sending back-and-forth emails, colleagues simply check their Live Board, which includes comments, documents, and real-time ETAs from all carriers and forwarders.

For invoice verification, what once required opening several spreadsheets and carrier websites now takes seconds. Entering a purchase order number in Beacon immediately returns dates, routing, and carrier details, all in one place.

Niki Morley, Logistics Manager at Westmill Foods, commented: “Onboarding and implementing was seamless. Beacon is very easy to use. The support is very good, friendly and approachable. At the touch of a button I can track a shipment. The information is accessible instantly. It has helped me speed up authorising invoices immensely – everything is in one place.”

Westmill is already planning its next step: a customised Live Board for a specific business unit. Once complete, the team will be able to discontinue a paid daily report from their forwarder – turning operational time savings into direct cost savings.

Fraser Robinson, CEO and co-founder of Beacon, said: “Westmill’s approach shows that supply chain transformation doesn’t need to happen all at once. The team focused on two specific challenges and fixed them. As they continue developing custom Live Boards for different business units, we’re seeing how incremental improvements compound over time, and we’re proud to support that journey.”

END

About Westmill Foods

Westmill Foods is one of Europe’s largest specialist food companies, manufacturer and supplier of authentic Asian and Afro-Caribbean food. We serve the chefs and owners of restaurants and takeaways as well as offering a diverse consumer portfolio. Our product range includes high quality rice, spices, sauces, edible oils, flour and noodles, which we sell to partners in wholesale as well as cash and carry, food service, grocery and B2B.

About Beacon

Beacon is an AI supply chain workplace platform empowering businesses to achieve more efficient, reliable, and sustainable supply chains. Our user-friendly solution eliminates manual

tracking by unifying real-time updates for multiple shipments across 160+ ocean carriers, 150+ airlines, and 158,000 road carriers in a single source of truth.

Beacon makes it easy to share live updates with partners, permanently connect essential documents to shipments, and generate the insights needed to improve supply chain performance. By breaking down communication silos and replacing fragmented systems with standardised data, we give power back to the people who move goods across the globe.

Customers including Fever-Tree, Tilda Rice, and Tata Consumer Products trust Beacon to track, share, and optimise their global supply chains.

Leah Jones

CommsCo

+44 7876 117760

[email us here](#)

This press release can be viewed online at: <https://www.einpresswire.com/article/882481383>

EIN Presswire's priority is source transparency. We do not allow opaque clients, and our editors try to be careful about weeding out false and misleading content. As a user, if you see something we have missed, please do bring it to our attention. Your help is welcome. EIN Presswire, Everyone's Internet News Presswire™, tries to define some of the boundaries that are reasonable in today's world. Please see our Editorial Guidelines for more information.

© 1995-2026 Newsmatics Inc. All Right Reserved.