

Luxury Ladies Bracelet Quartz Watch Vendor KODA Redefines Elegance At INHORGENTA

SHENZHEN, GUANGDONG, CHINA, February 7, 2026 /EINPresswire.com/ --

The subtle click of a polished jewelry clasp and the rhythmic sweep of a watch hand are increasingly merging into a single, cohesive statement of style. As a premier stage for the watch and jewelry industry, INHORGENTA MUNICH recently served as a critical barometer for these evolving aesthetics, showcasing how modern timepieces are transitioning into sophisticated wrist accessories.

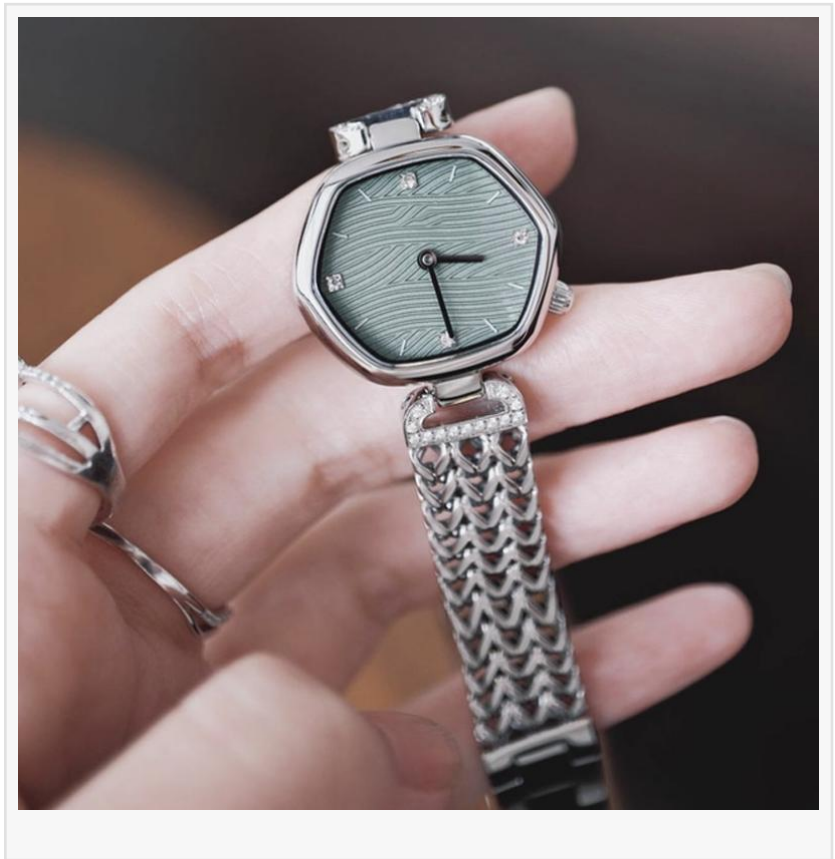
This year's event saw a particular focus on the intersection of craftsmanship and design, a space where a [China Leading Luxury Ladies Bracelet Quartz Watch Vendor](#) like Shenzhen [Koda](#) Horologe Co., Ltd. (KODA) set new benchmarks.

The latest development trends in the luxury ladies bracelet quartz watch sector emphasize ergonomic fluidity and "jewelry-first" engineering, making these pieces ideal for high-end galas, professional corporate settings, and exclusive social gatherings.

The Strategic Significance of INHORGENTA in the Global Watch Industry

INHORGENTA has long been recognized as Europe's leading platform for jewelry, watches, and gemstones, acting as a vital nexus for manufacturers, retailers, and designers. For industry participants, the exhibition is more than a trade fair; it is a collaborative ecosystem that dictates the seasonal pulse of the market. The presence of international vendors highlights the globalized nature of the supply chain, where technical precision from manufacturing hubs meets the refined design sensibilities of the European market.

The recently concluded event allowed enterprises to engage directly with global distributors and horological experts. For a professional manufacturer like KODA, INHORGENTA provided an



essential stage to demonstrate how rigorous production standards, such as CE and ROHS compliance, integrate with artistic vision. The exhibition facilitated a deep dive into market demands, allowing producers to align their bulk production capabilities with the nuanced expectations of international luxury consumers.

Modernizing Tradition: The Evolution of the Ladies Bracelet Watch

The demand for female timepieces has transitioned from mere miniaturized versions of men's watches to dedicated designs that prioritize elegance and versatility. A significant trend within this evolution is the rise of the ladies bracelet watch, which integrates the structural integrity of a quartz

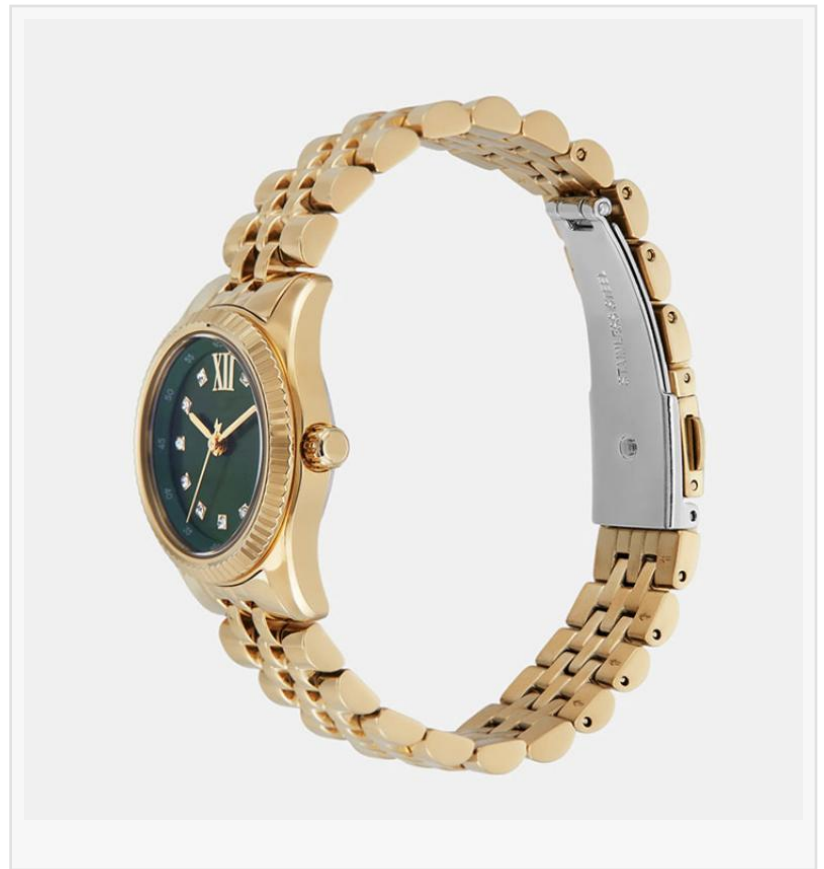
movement with the delicate aesthetics of a luxury bracelet. Modern consumers are increasingly seeking "transitional" pieces—watches that possess the durability for daily wear while maintaining the opulence required for evening events.

This shift is reflected in the move toward unconventional case shapes and intricate dial textures. For instance, the resurgence of vintage-inspired aesthetics, such as the "crash" or asymmetrical case designs, speaks to a desire for individuality. By utilizing high-quality glass dial windows and specialized alloy or stainless steel finishes, manufacturers are able to offer a ladies bracelet quartz watch that delivers both visual depth and long-term reliability. The focus has shifted toward a "business-style" elegance that does not sacrifice femininity, ensuring that the watch complements a wide array of fashion ensembles.

Innovation and Craftsmanship: The KODA Approach to Luxury

In the competitive landscape of horology, technical expertise remains the foundation of luxury. Based in a 1,000-square-meter facility in Shenzhen, KODA has cultivated a reputation for balancing high-volume output with bespoke precision. With a portfolio exceeding 3,000 SKUs, the company demonstrates an ability to iterate rapidly on design while maintaining the strict quality controls necessary for international certification.

The development of a high-quality ladies bracelet quartz watch involves a complex assembly process. Beyond the movement, the "bracelet" element requires meticulous attention to link articulation and clasp security to ensure maximum comfort. By offering custom logo services and specialized design consultations, the vendor empowers global brands to localize these



luxury products for their specific demographics. This adaptability is a core advantage for a ladies bracelet watch vendor looking to bridge the gap between traditional manufacturing and contemporary fashion trends.

The Growing Influence of Chinese Manufacturers and KODA's Heritage

The narrative of Chinese watchmaking is rapidly changing from one of pure mass production to one of sophisticated innovation and brand building. As a China Leading Luxury Ladies Bracelet Quartz Watch Vendor, KODA exemplifies this transition. With more than 17 years of experience in brand design, R&D, and engineering, the company provides efficient solutions to demanding requirements, offering bespoke service from start to finish. This deep-rooted expertise has allowed them to evolve from a specialized factory into a brand-oriented producer that sets international trends.

International market prospects for these vendors are expanding as they prove their ability to meet the rigorous aesthetic and environmental standards of the West. The integration of fashion-forward designs with the reliability of quartz technology has made the ladies bracelet quartz watch a staple in global retail catalogs. As Chinese suppliers continue to invest in sustainable production practices and leverage nearly two decades of engineering heritage, their role as primary partners for international luxury brands is expected to solidify further, driven by a commitment to both quality and design versatility.

A New Era of Accessible Luxury

As the curtains closed at INHORGENTA, it was clear that the future of the female timepiece lies in the harmonious blend of jewelry and horology. The commitment of a ladies bracelet watch vendor to refining these designs ensures that the modern woman has access to timepieces that are as functional as they are beautiful. Through continuous iteration and a deep understanding of global market shifts, the industry is moving toward a more inclusive definition of luxury—one where precision, style, and craftsmanship are accessible on a global scale.

For more information on the latest collections and manufacturing capabilities, please visit: <https://www.kodawatch.com/>.

Shenzhen Koda Horologe Co., Ltd.

Shenzhen Koda Horologe Co., Ltd.

+ +86 13798347697

admin@adminkoda.cn

Visit us on social media:

[LinkedIn](#)

[Facebook](#)

[TikTok](#)

This press release can be viewed online at: <https://www.einpresswire.com/article/890201770>

EIN Presswire's priority is source transparency. We do not allow opaque clients, and our editors

try to be careful about weeding out false and misleading content. As a user, if you see something we have missed, please do bring it to our attention. Your help is welcome. EIN Presswire, Everyone's Internet News Presswire™, tries to define some of the boundaries that are reasonable in today's world. Please see our Editorial Guidelines for more information.

© 1995-2026 Newsmatics Inc. All Right Reserved.