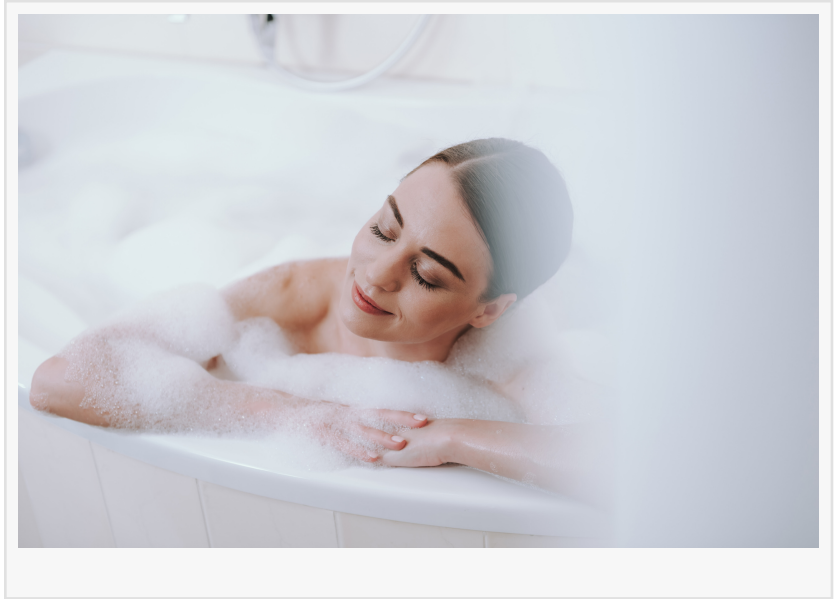


E.C.O. Builders Inc. Highlights Strategic Bathroom Renovation Priorities That Enhance Long-Term Property Value

SLIDELL, LA, UNITED STATES, February 13, 2026 /EINPresswire.com/ --

Bathroom remodeling remains one of the most common residential improvement projects, but not all upgrades deliver the same return in functionality, durability, or long-term property value. As construction costs, material availability, and homeowner expectations continue to evolve, prioritization has become a critical factor in successful bathroom renovations. Strategic decision-making focuses less on trend-driven changes and more on improvements that address performance, longevity, and everyday usability.



Bathroom projects often begin with cosmetic goals, but experienced builders frequently emphasize infrastructure first. Plumbing integrity, moisture control, and structural soundness form the foundation of any lasting remodel. Aging pipes, insufficient ventilation, or compromised subflooring can undermine even the most visually appealing upgrades. Addressing these elements early reduces the likelihood of future repairs and supports consistent performance over time.

“

Sound construction, practical layouts, and materials selected for durability tend to matter far more than decorative trends”

Elwin Ordoyne

Layout efficiency represents another key consideration. Bathrooms with awkward traffic flow, limited storage, or

poorly placed fixtures often benefit from reconfiguration rather than surface-level updates. Relocating fixtures may increase upfront costs, but functional layouts typically improve daily use and long-term satisfaction. Clearances around toilets, vanities, and showers are especially important for comfort and accessibility.

Shower and tub upgrades continue to rank high among value-focused improvements. Walk-in showers with durable waterproofing systems, properly sloped floors, and high-quality drains tend to outlast trend-based designs. Bathtub replacements are often evaluated based on household needs, available space, and maintenance considerations. Materials selected for wet areas should prioritize water resistance, ease of cleaning, and structural reliability.



Vanities and storage solutions play a significant role in both usability and perception. Adequate storage reduces clutter and supports organization, while well-constructed cabinetry resists moisture-related deterioration. Countertop materials are typically evaluated for durability, maintenance requirements, and compatibility with daily use rather than appearance alone. Integrated storage solutions often deliver greater functional value than decorative fixtures.

Flooring selection directly affects longevity and safety. Bathrooms require materials capable of withstanding moisture exposure, temperature changes, and frequent cleaning. Slip resistance, installation method, and subfloor compatibility influence long-term performance. Proper installation is as important as material choice, as inadequate preparation can lead to movement, cracking, or water intrusion.

Lighting and ventilation upgrades frequently provide understated but meaningful returns. Adequate lighting supports functionality and reduces shadowing around work areas such as mirrors and vanities. Ventilation systems help manage humidity, prevent mold growth, and protect finishes. These improvements contribute to indoor air quality and structural preservation, often with minimal visual impact.

Fixture selection also benefits from a performance-first approach. Water-efficient fixtures that meet current standards support long-term operating efficiency while maintaining consistent pressure and reliability. Simpler designs with readily available replacement parts often outperform complex fixtures over time, particularly in high-use environments.

[Elwin Ordoyne](#), Vice President of [E.C.O. Builders Inc.](#) in Slidell, notes that value-focused bathroom remodeling begins with understanding how the space is actually used. “Bathrooms that perform well day after day usually share the same traits,” said Elwin Ordoyne. “Sound construction, practical layouts, and materials selected for durability tend to matter far more than decorative trends.”

Accessibility considerations increasingly influence remodeling priorities. Features such as curbless showers, reinforced walls for future grab bar installation, and wider door clearances support long-term adaptability. These upgrades often blend seamlessly into the design while

extending usability across different life stages.

Consistency with the rest of the home also affects perceived value. Bathrooms that align with overall construction quality, material standards, and architectural style typically integrate more naturally into the property. Over-customization or mismatched finishes can create visual disconnects that detract from cohesion.

Project sequencing represents another factor in remodeling outcomes. Coordinating demolition, mechanical updates, waterproofing, and finish installation in the correct order reduces rework and delays. Clear planning supports efficiency and minimizes disruption during construction.

Material availability and lead times have also become relevant planning considerations. Selecting readily available materials with established supply chains reduces scheduling uncertainty and allows projects to progress more predictably. Flexibility during the selection phase often prevents delays later in the process.

Bathroom remodeling decisions that prioritize structural integrity, usability, and durability tend to yield consistent results regardless of market conditions. While design preferences evolve, fundamental performance requirements remain constant. Projects grounded in these principles typically maintain relevance and functionality well beyond initial completion.

As homeowners continue to evaluate improvement priorities, bathrooms remain a focal point due to their daily use and technical complexity. Remodeling smarter involves focusing on elements that support long-term performance rather than short-term appeal. When improvements align with how a space functions, value is reinforced through reliability, comfort, and sustained usability.

Morgan Thomas
Rhino Digital, LLC
+1 504-875-5036

[email us here](#)

Visit us on social media:

[Facebook](#)

This press release can be viewed online at: <https://www.einpresswire.com/article/892191894>

EIN Presswire's priority is source transparency. We do not allow opaque clients, and our editors try to be careful about weeding out false and misleading content. As a user, if you see something we have missed, please do bring it to our attention. Your help is welcome. EIN Presswire, Everyone's Internet News Presswire™, tries to define some of the boundaries that are reasonable in today's world. Please see our Editorial Guidelines for more information.

© 1995-2026 Newsmatics Inc. All Right Reserved.