

Village Green Redefines Memory Care for Assisted Living in Conroe, Texas

Village Green Memory Care releases comprehensive overview of residential dementia care services, protocols, and staffing in Conroe, Texas.

CONROE, TX, UNITED STATES, March 13, 2026 /EINPresswire.com/ -- [Village Green Memory Care Community](#) has released updated information outlining the structure, scope, and operational approach of its residential services in response to increased public inquiry regarding [assisted living in Conroe](#), Texas and [memory care in Conroe](#). The update provides a detailed overview of service delivery models, safety protocols, staffing structure, and care planning frameworks currently implemented within its dementia-focused residential setting.

The following release presents an overview of operational models, resident support systems, and the broader role of dementia-focused residential care within Montgomery County. This document is intended to provide factual, neutral information for families, referral sources, and community stakeholders evaluating senior care options.

Growing Demand for Assisted Living in Conroe, Texas

Conroe and surrounding areas have experienced measurable population growth over the past decade. As the population ages, demand for assisted living in Conroe, Texas has increased accordingly. Families seeking residential care options often evaluate multiple models of support, including independent living, general assisted living, and specialized memory care programs.

Assisted living typically refers to residential settings where older adults receive support with activities of daily living such as bathing, dressing, medication management, and meal



Alzheimer's support facilities Conroe-

preparation. These environments are designed for individuals who require structured assistance but do not require hospital-level medical care.

Within Conroe, residential providers vary in size, staffing model, building design, and clinical coordination. Some focus primarily on general assisted living, while others incorporate memory-focused programming for individuals diagnosed with Alzheimer's disease or related dementias.

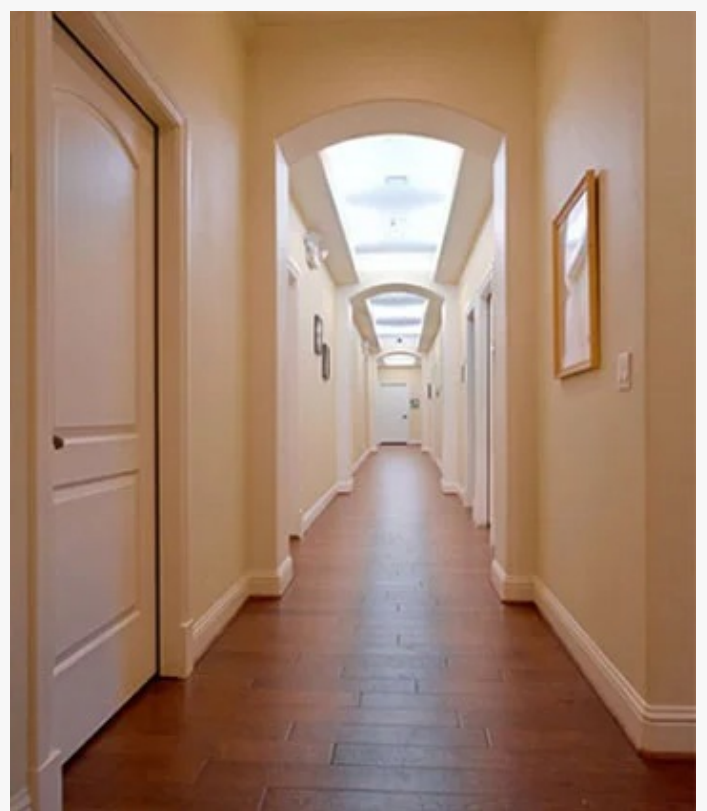
As cognitive impairment progresses, general assisted living may no longer provide the level of supervision necessary to maintain safety. In such situations, families often explore memory care in Conroe as a distinct service category.

Understanding Memory Care in Conroe

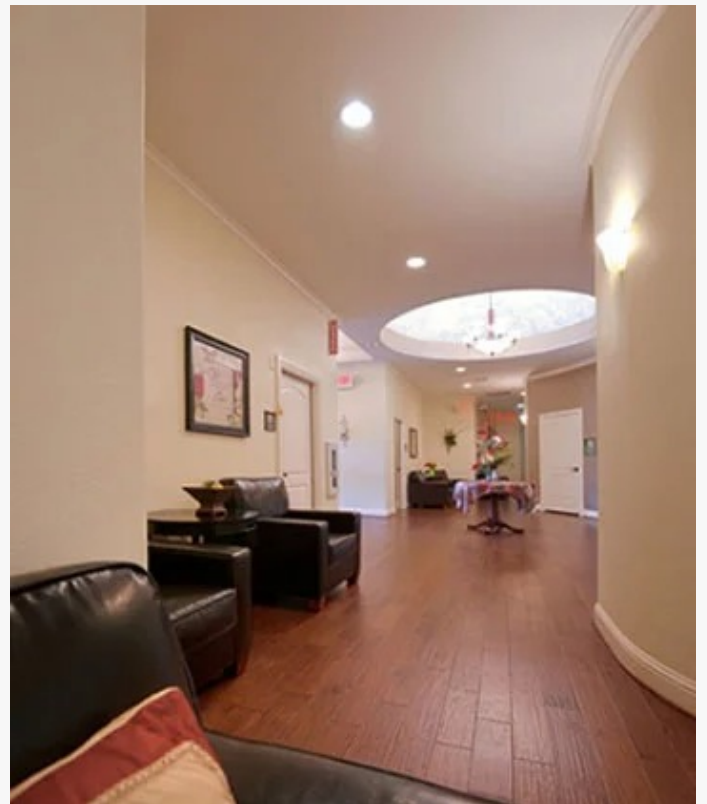
Memory care refers to a residential model specifically structured for individuals living with Alzheimer's disease, vascular dementia, Lewy body dementia, frontotemporal dementia, or other cognitive disorders. These environments differ from general assisted living due to their enhanced supervision, environmental safeguards, and staff training in dementia-related behavioral support.

Memory care in Conroe is typically characterized by:

- Secured residential layouts to reduce wandering risk
- Structured daily routines designed to support cognitive stability
- Staff trained in redirection and behavioral management
- Individualized care planning based on cognitive stage
- Family communication protocols



Alzheimer's Care conroe tx



memory care conroe

- Coordinated medication oversight

In dementia-specific settings, routine and predictability play a significant role in reducing confusion and agitation. Research consistently indicates that structured daily rhythms and familiar environments can help maintain functioning for longer periods.

Memory-focused communities also incorporate sensory engagement activities, small-group programming, and therapeutic recreation tailored to cognitive ability. These approaches are intended to promote quality of life while addressing progressive neurological changes.

Distinguishing Assisted Living from Memory Care

Although assisted living in Conroe, Texas and memory care in Conroe may appear similar from an external perspective, operational distinctions are important.

General assisted living environments are typically appropriate for residents who can navigate common areas safely and respond to verbal cues without significant cognitive impairment. These settings often emphasize independence with supplemental support.

Memory care settings, by contrast, are structured around:

- Higher staff-to-resident oversight ratios
- Secure entry and exit points
- Environmental modifications to minimize confusion
- Behavioral support frameworks
- Continuous monitoring of cognitive decline

While assisted living may incorporate light memory support services, dedicated memory care



Memory care respite services Conroe



Memory care units Conroe

units are specifically designed for individuals who require closer supervision and tailored engagement due to cognitive impairment.

Families frequently consult healthcare providers to determine which level of care is appropriate. Medical diagnoses, cognitive testing, functional assessments, and safety evaluations inform placement decisions.

Residential Design and Environmental Considerations

The physical environment in memory care settings plays a significant role in resident well-being. Design elements commonly associated with memory care in Conroe include:

- Clearly marked living spaces
- Visual cues to assist navigation
- Reduced noise stimulation
- Secure outdoor access areas
- Circular hallways to reduce dead ends
- Simplified décor to minimize sensory overload

These features aim to reduce anxiety and disorientation. Individuals living with dementia often respond positively to familiar visual markers and consistent layouts.

In assisted living in Conroe, Texas, architectural design may focus more broadly on accessibility, such as wheelchair ramps, handrails, and private or semi-private suites. While security features are present, they are typically less restrictive than in dedicated memory care environments.

Environmental planning remains an ongoing focus in dementia research. Providers often evaluate layout efficiency, fall prevention strategies, and sensory modulation approaches when reviewing operational improvements.

Care Planning and Individualized Support

Residential dementia care involves detailed care planning processes. Each resident typically undergoes an assessment that evaluates:

- Medical history
- Medication needs
- Cognitive status
- Functional ability
- Nutritional requirements
- Behavioral history
- Mobility status

Based on this evaluation, a personalized care plan is developed. The plan outlines daily assistance requirements, therapeutic activity participation, dietary considerations, and communication preferences.

Care plans are periodically reviewed to reflect changes in cognitive or physical health. Dementia is a progressive condition, and adjustments to supervision levels or support strategies are often necessary over time.

In assisted living in Conroe, Texas, individualized plans may focus more heavily on mobility assistance and medication administration. In memory care settings, behavioral management strategies and cognitive engagement protocols are typically more detailed.

Staffing Structure and Clinical Access

Staffing models in memory care communities are structured to provide consistent supervision. Team members commonly receive training in:

- Dementia communication techniques
- Redirection strategies
- Non-pharmacological behavior management
- Emergency response
- Fall prevention

Memory care in Conroe also involves coordination with external healthcare providers. Physicians, therapists, hospice providers, and other specialists may visit residents as needed.

Some residential communities maintain access to nursing oversight on a scheduled or on-call basis. Access to clinical professionals does not necessarily indicate operation as a nursing home. Skilled nursing facilities, by regulatory definition, provide higher levels of medical care and rehabilitation services.

Families evaluating assisted living in Conroe, Texas frequently seek clarity regarding nurse availability, medication management oversight, and coordination with primary care providers.

Clear communication regarding the distinction between residential memory care and skilled nursing facilities helps ensure informed decision-making.

Structured Daily Programming

Routine and engagement remain central components of dementia-focused residential care. Daily schedules typically include:

- Morning orientation sessions

- Gentle physical activity
- Music therapy
- Reminiscence discussions
- Cognitive stimulation activities
- Sensory exercises
- Social interaction opportunities

Structured programming serves multiple purposes. It supports cognitive engagement, encourages movement, and reduces prolonged inactivity.

Memory care in Conroe communities often implement small-group activities rather than large gatherings, as smaller settings may reduce overstimulation.

Assisted living in Conroe, Texas may also provide activity calendars, though cognitive specialization varies depending on the provider's focus.

Programming is generally adapted to residents' cognitive stages. As dementia progresses, activities may shift from verbally oriented discussions to tactile or sensory experiences.

Safety and Risk Mitigation

Dementia increases the likelihood of wandering, falls, and medication errors. As a result, safety measures in memory care environments include:

- Secured access points
- Continuous supervision
- Medication tracking systems
- Fall monitoring protocols
- Staff training in elopement prevention

Risk mitigation strategies are reviewed periodically to align with regulatory standards and evolving best practices.

In assisted living settings, safety frameworks are also present but may not involve secured perimeters unless a designated memory unit is included.

Families exploring memory care in Conroe often cite safety as a primary factor in decision-making.

Family Involvement and Communication

Family participation remains a significant component of dementia support. Residential communities typically maintain structured communication channels, including:

- Scheduled care conferences
- Routine status updates
- Notification of health changes
- Collaboration on care adjustments

Families are encouraged to remain engaged in care planning discussions. Transitioning from home-based care to residential assisted living in Conroe, Texas can be emotionally complex.

Educational resources regarding dementia progression, behavioral symptoms, and long-term planning are often made available to families.

Ongoing communication helps reduce uncertainty and supports collaborative decision-making.

Regulatory and Ethical Considerations

Residential care providers operate under state licensing regulations. Compliance includes:

- Staff training standards
- Medication management policies
- Emergency preparedness planning
- Documentation requirements
- Resident rights protections

Memory care in Conroe must adhere to additional requirements when operating secured dementia units.

Ethical considerations include resident dignity, informed consent, and respect for autonomy. As cognitive capacity declines, legal decision-making authority may shift to designated representatives.

Transparency regarding services offered, scope of supervision, and limitations of care remains an important component of regulatory compliance.

Community Integration and Local Impact

Assisted living in Conroe, Texas, contributes to the broader healthcare ecosystem within Montgomery County. Residential communities often collaborate with:

- Local physicians
- Rehabilitation providers
- Pharmacies
- Hospice agencies
- Community volunteer groups

Memory care communities may also participate in dementia awareness initiatives or educational events.

The economic impact of senior housing includes employment opportunities for caregivers, nurses, culinary staff, and administrative personnel.

As Conroe continues to expand, infrastructure planning increasingly includes senior residential care capacity considerations.

Planning Considerations for Families

Selecting residential care involves evaluation of several factors:

- Level of cognitive impairment
- Safety risks
- Medical complexity
- Financial planning
- Proximity to family
- Regulatory compliance status

Assisted living in Conroe, Texas may be appropriate during early stages of cognitive decline, while later stages may require memory-focused environments.

Healthcare professionals often recommend early evaluation rather than waiting for crisis-driven placement decisions.

Proactive planning allows families to tour facilities, review policies, and assess compatibility with resident needs.

Long-Term Outlook for Memory Care in Conroe

Demographic projections indicate continued growth in the population aged 65 and older throughout Texas. With age being a primary risk factor for dementia, demand for memory care in Conroe is expected to remain steady.

Providers continue to monitor evolving research in dementia treatment, behavioral management, and environmental design.

Technological tools, such as electronic medication tracking systems and fall monitoring devices, are increasingly integrated into residential settings.

Policy discussions at the state level may also influence licensing standards and staffing requirements in the coming years.

Ongoing Developments in Residential Dementia Care

As demographic trends continue to influence healthcare planning across Montgomery County,

residential providers are reviewing operational models to align with evolving clinical standards and regulatory expectations. Assisted living in Conroe, Texas, remains part of a broader senior care framework that includes memory-focused residential environments designed for individuals experiencing progressive cognitive conditions.

Memory care in Conroe continues to adapt to changes in dementia research, environmental safety design, staff training standards, and family communication practices. Residential care planning increasingly emphasizes structured routines, behavioral support strategies, and coordinated medical oversight through external healthcare partnerships.

Industry observers note that clarity regarding the distinction between general assisted living and dementia-specific residential care remains an important factor for families evaluating long-term options. As awareness of cognitive health needs grows, structured memory care environments are expected to remain a consistent component of the senior housing landscape in Texas.

About Village Green Memory Care Community

Village Green Memory Care Community is a residential provider specializing in dementia-focused support for older adults in Texas. The organization operates memory care environments designed for individuals living with Alzheimer's disease and related dementias. Services include structured daily programming, individualized care planning, secured residential layouts, and coordination with external healthcare providers. The community maintains access to clinical oversight and emphasizes supervision, safety protocols, and family communication within its operational framework.

Zahra Sabir

Village Green Alzheimers Care

+1 281-208-5876

info@villagegreenalzheimerscare.com

Visit us on social media:

[LinkedIn](#)

[Instagram](#)

[Facebook](#)

This press release can be viewed online at: <https://www.einpresswire.com/article/898482259>

EIN Presswire's priority is source transparency. We do not allow opaque clients, and our editors try to be careful about weeding out false and misleading content. As a user, if you see something we have missed, please do bring it to our attention. Your help is welcome. EIN Presswire, Everyone's Internet News Presswire™, tries to define some of the boundaries that are reasonable in today's world. Please see our Editorial Guidelines for more information.

© 1995-2026 Newsmatics Inc. All Right Reserved.