

# Cloud-Clone Advances Global Obesity Research with Innovative Solutions for Next-Generation Therapeutics

*Cloud-Clone drives technological innovation for obesity research, providing validated targets for precise matching of key molecules: GLP-1R, GDF-8 and GDF-15.*

HUSTON, TX, UNITED STATES, March 27, 2026 /EINPresswire.com/ -- Obesity has emerged as one of the most pressing global public health challenges. According to projections published in The Lancet, more than half of the world's adult population could be affected by obesity by 2050. This growing burden is driving rapid expansion in the weight-loss therapeutics market, positioning metabolic disease research as a key focus in the biopharmaceutical industry.

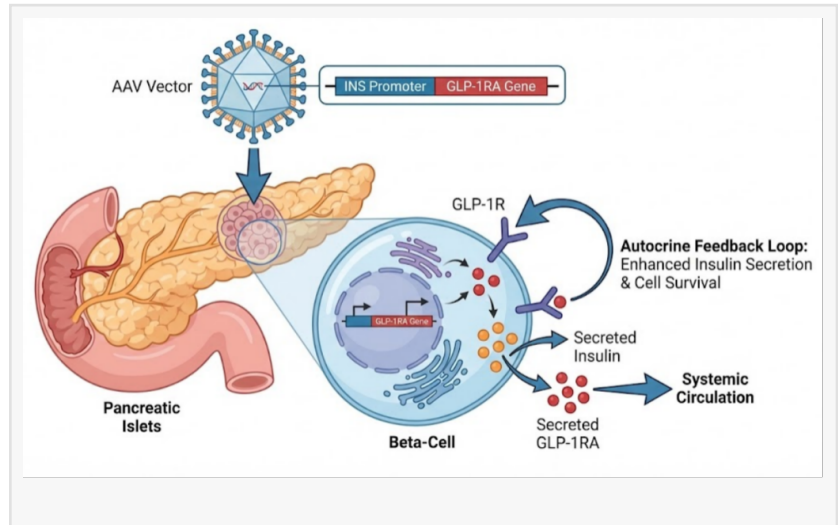
The rising prominence of [GLP-1](#) receptor agonists, including tirzepatide and semaglutide, has further accelerated interest in obesity-related drug development. However, despite recent breakthroughs, significant scientific and technical challenges remain.

## Addressing Key Bottlenecks in Obesity Research

Current weight-loss strategies often face limitations in long-term efficacy. Widely used GLP-1-based therapies, while effective, may present challenges such as muscle loss and weight regain after discontinuation. At the same time, research into emerging therapeutic targets requires high-quality biological materials and precise analytical tools to support mechanism validation and pathway analysis.

In addition, researchers frequently encounter practical constraints, including limited sample volumes combined with the need to measure multiple biomarkers simultaneously.

Figure Schematic diagram of AAV-mediated GLP-1RA gene expression and its mechanism of action in pancreatic  $\beta$ -cells



With extensive experience in biological reagent development, [Cloud-Clone](#) has established a comprehensive product platform supporting target validation, pathway analysis, and drug discovery.

For example, GDF-8 (myostatin), a key regulator of muscle growth, has become an important target in addressing muscle loss during weight reduction. Cloud-Clone provides high-purity recombinant GDF-8 protein (purity >95%), validated through multiple analytical methods, offering reliable materials for the development of therapies aimed at balancing fat loss and muscle preservation.

In parallel, GDF-15 has attracted increasing attention for its role in appetite regulation and energy metabolism through interaction with the GFRAL receptor. Cloud-Clone's antibodies and assay kits enable accurate detection and functional studies of this pathway, supporting research into both weight management and cachexia-related conditions.

### Multiplex Technology Driving Research Efficiency

To address the growing demand for multi-target analysis, Cloud-Clone has developed multiplex assay solutions that significantly improve experimental efficiency.

By utilizing encoded microbeads conjugated with target-specific antibodies, multiple analytes can be measured simultaneously within a single sample. This approach reduces assay time from days to hours, lowers sample consumption by up to 90%, and achieves high sensitivity at the fg/mL level.

These capabilities are particularly valuable in obesity research, where complex signaling networks require simultaneous analysis of multiple biomarkers to generate meaningful insights.

### Strengthening Global Research Through Independent Innovation

Cloud-Clone continues to expand its technological capabilities through independent innovation. The company has developed a proprietary antibody library exceeding 27,000 validated targets, enabling precise matching for key molecules such as GLP-1R, GDF-8, and GDF-15.

By strengthening in-house control over core biological materials, Cloud-Clone helps ensure consistent supply, improved cost efficiency, and faster response to evolving research demands. Its integrated product platform supports the transition from basic research to translational applications, making advanced tools more accessible to laboratories worldwide.

Today, Cloud-Clone products are used by researchers across thousands of laboratories globally, supporting studies in obesity, metabolic disorders, and related fields.

### Looking Ahead

As research into obesity and metabolic diseases continues to evolve, Cloud-Clone remains committed to advancing small molecule and protein-based detection technologies. The company will continue to enhance product performance and expand its portfolio to support multi-target therapeutic strategies.

Through ongoing innovation, Cloud-Clone aims to empower the global scientific community in addressing one of the most urgent health challenges of our time.

About Cloud-Clone Corp.

Cloud-Clone Corp. specializes in the development and production of high-quality immunoassay reagents and detection solutions. With expertise in antibody engineering, multiplex assay development, and cross-platform compatibility, the company provides reliable research tools for precision medicine and advanced biomedical research.

Its core offerings include recombinant proteins, antibodies, ELISA kits, primary cells, multiplex cytokine detection kits, and professional CRO services, supporting a wide range of applications in life science and medical research.

For more information, visit:

[www.cloud-clone.com](http://www.cloud-clone.com)

CLOUD-CLONE CORP. (CCC)

Tel: 001-832-538-0970, 0086-27-8425-9552

Email: [mail@cloud-clone.com](mailto:mail@cloud-clone.com), [sales@cloud-clone.us](mailto:sales@cloud-clone.us)

Follow us on social media:

LinkedIn: <https://www.linkedin.com/company/cloud-clone-corp/>

Instagram: <https://www.instagram.com/cloudclonecorp2023/>

TikTok: <https://www.tiktok.com/@cloudclonecorp>

SuKi Duan

Cloud-Clone Corp

[email us here](#)

Visit us on social media:

[LinkedIn](#)

[Instagram](#)

[TikTok](#)

[X](#)

---

This press release can be viewed online at: <https://www.einpresswire.com/article/902002927>

EIN Presswire's priority is source transparency. We do not allow opaque clients, and our editors try to be careful about weeding out false and misleading content. As a user, if you see something we have missed, please do bring it to our attention. Your help is welcome. EIN Presswire, Everyone's Internet News Presswire™, tries to define some of the boundaries that are reasonable in today's world. Please see our Editorial Guidelines for more information.

© 1995-2026 Newsmatics Inc. All Right Reserved.