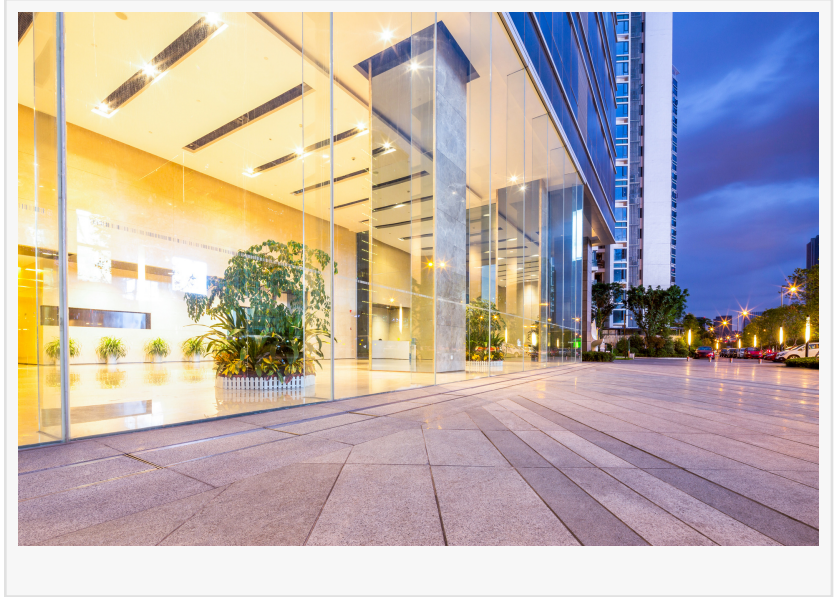


Frequent Cleaning Practices Address Demands of High-Traffic Retail Environments

BATON ROUGE, LA, UNITED STATES, March 27, 2026 /EINPresswire.com/ -- High-traffic retail environments require consistent and frequent cleaning practices to maintain operational standards, support customer experience, and manage the impact of continuous foot traffic. Retail spaces that experience steady customer flow throughout the day are subject to increased accumulation of dirt, debris, and surface contamination, making routine maintenance an essential part of daily operations.



Foot traffic is one of the primary contributors to wear and contamination in retail settings. Customers entering and exiting a store bring in dust, moisture, and outdoor debris, which can quickly accumulate on floors and surfaces. Entryways, aisles, and checkout areas tend to experience the highest levels of activity, requiring more frequent attention to maintain cleanliness and safety.

“

Retail environments with steady customer traffic require ongoing attention throughout the day.”

Falesity Mecca

Flooring systems are particularly affected in high-traffic environments. Hard surfaces such as tile, vinyl, and concrete can show visible wear when debris is not regularly removed. Dirt and grit can act as abrasive materials, gradually affecting the finish and appearance of

flooring over time. Carpeted areas can also trap particles, leading to buildup that may require deeper cleaning methods.

Surface contact points are another area of focus. Door handles, counters, display fixtures, and payment terminals are frequently touched throughout the day. These areas can accumulate residues and require regular cleaning to maintain hygiene standards. In environments with continuous customer interaction, these surfaces may need to be addressed multiple times during operating hours.

Restroom facilities within retail spaces also require ongoing attention. High usage levels can lead to rapid changes in cleanliness conditions, making frequent inspection and maintenance necessary. Supplies, sanitation, and overall condition must be monitored to ensure that facilities remain functional and presentable.

Product displays and shelving are subject to environmental exposure as well. Dust and airborne particles can settle on merchandise, particularly in open-display formats. Regular cleaning of these areas helps maintain product presentation and reduces the impact of environmental factors on displayed items.



Waste management is another component of maintaining high-traffic retail environments. Trash receptacles in customer areas can fill quickly, especially during peak hours. Timely removal of waste helps prevent overflow and contributes to overall cleanliness within the space.

[Falesity Mecca](#), owner of Mid City Cleaning in Baton Rouge, Louisiana, noted that frequent cleaning is necessary to manage the pace of activity in retail settings.

“Retail environments with steady customer traffic require ongoing attention throughout the day. Cleaning schedules are often adjusted based on activity levels to maintain consistent conditions across the space,” said Mecca.

Cleaning frequency is often determined by traffic patterns. Peak hours may require more frequent service intervals, while slower periods allow for more detailed cleaning tasks. Understanding these patterns helps ensure that cleaning efforts align with actual usage rather than fixed schedules alone.

Health and safety considerations are also central to cleaning practices. Accumulated debris on floors can create slip hazards, particularly when combined with moisture. Regular cleaning reduces these risks and supports a safer environment for both customers and staff.

Air quality is another factor influenced by cleaning frequency. Dust and particulate matter can become airborne through regular movement within the space. Routine cleaning of floors, vents,

and surfaces helps manage these conditions and contributes to a more comfortable indoor environment.

Cleaning equipment and methods are selected based on the type of surfaces and level of use within the space. High-traffic areas may require more durable equipment capable of handling frequent use, while specialized tools may be used for detailed cleaning tasks. The selection of appropriate cleaning methods supports both efficiency and effectiveness.

Staff coordination plays a role in maintaining consistent cleaning practices. Cleaning teams must operate within the flow of retail activity, addressing areas without disrupting customer movement. This often involves working during off-peak hours for deeper cleaning tasks and maintaining visibility during operating hours for routine upkeep.

Environmental considerations are also part of cleaning operations. The use of appropriate cleaning agents, waste disposal methods, and water usage practices can influence the overall impact of cleaning activities. Retail environments may incorporate practices that align with broader sustainability goals while maintaining cleanliness standards.

The need for frequent cleaning in high-traffic retail spaces reflects the dynamic nature of these environments. Continuous movement, interaction, and activity require ongoing attention to maintain operational conditions. Cleaning practices are adapted to meet these demands, ensuring that spaces remain functional, safe, and consistent throughout the day.

As retail environments continue to evolve, the role of cleaning remains integral to daily operations. Frequent and structured cleaning practices support the overall function of the space, addressing the challenges associated with high levels of activity while maintaining consistent conditions for customers and staff.

Morgan Thomas
Rhino Digital, LLC
+1 504-875-5036

[email us here](#)

Visit us on social media:

[Facebook](#)

This press release can be viewed online at: <https://www.einpresswire.com/article/902177689>

EIN Presswire's priority is source transparency. We do not allow opaque clients, and our editors try to be careful about weeding out false and misleading content. As a user, if you see something we have missed, please do bring it to our attention. Your help is welcome. EIN Presswire, Everyone's Internet News Presswire™, tries to define some of the boundaries that are reasonable in today's world. Please see our Editorial Guidelines for more information.

© 1995-2026 Newsmatics Inc. All Right Reserved.