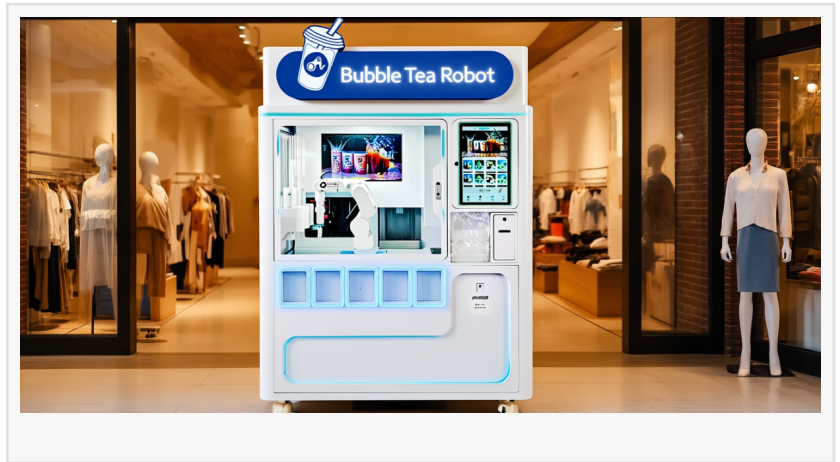


Anno Robot Unveils AI-Powered Bubble Tea Machine for 24/7 Perfect Boba Delivery

SHENZHEN, GUANGDONG, CHINA, April 2, 2026 /EINPresswire.com/ -- [Anno Robot's](#) new AI-powered [bubble tea machine](#) uses a 6-axis robotic arm (a mechanical device with six independent joints for precise, human-like movements) to prepare and dispense customized boba drinks 24/7 with zero human staffing. It achieves 98% brewing consistency, supports 20+ flavor combinations, cuts labor costs



by up to 60%, and can replace three full-time employees per kiosk. Already certified CE/FCC/ISO9001 and backed by 27 utility-model patents, the compact kiosk targets high-traffic venues worldwide. Global bubble tea market context: valued at USD 3.96 billion in 2025 and projected to reach USD 9.72 billion by 2035 (CAGR 9.5%).

Why the Bubble Tea Machine Market Needs This Breakthrough in 2026

The global bubble tea market was valued at USD 3.96 billion in 2025 and is forecast to expand to USD 9.72 billion by 2035 at a compound annual growth rate (CAGR) of 9.5%. Traditional boba preparation remains labor-intensive, with inconsistent results during peak or off-hours. Anno Robot's robotic boba tea machine directly solves these issues through full automation.

Core Technology Behind Anno Robot's Boba Tea Machine

The system centers on Anno Robot's proprietary 6-axis robotic arm, supported by artificial intelligence for real-time decision-making and motion control. The Shenzhen-based company, founded in 2017, invests 30% of annual revenue in R&D and holds over 70 national patents, 27 of which are utility-model patents protecting core preparation processes for milk tea, coffee, ice cream, and cocktails.

Key features include:

AI-driven precision mixing with 20+ preset formulas and free customization (base, toppings, sweetness, ice).

98% consistency in every cup and 0% recipe-error rate.

Average service time of approximately 45–60 seconds.

Touch-screen payments (card, mobile wallet, contactless) and remote IoT monitoring.

Modular kiosk design (roughly 2.5 m²) that relocates overnight to match foot traffic.

Real-World Value: Cost Savings and Operational Flexibility

Operators using similar Anno Robot beverage kiosks report up to 60% labor-cost reduction and the ability to replace up to three full-time employees per unit. The machine runs 24/7 without night-shift staffing, extends revenue windows, and maintains non-contact hygiene for airports, malls, hospitals, and tourist sites. Staff master programming and integration via free online training in just 90 minutes. One-year warranty plus lifetime system maintenance further lowers adoption barriers.

Expert Perspective on the Technology

Dr. Elena Vargas, food-automation researcher at the National University of Singapore's Institute of Food Technology (with 12 years studying robotic foodservice systems), stated in a 2026 analysis: "Robotic arms like Anno's 6-axis model do more than replace labor—they deliver repeatability that human operators cannot sustain over 24-hour cycles. In high-volume boba environments, this 98% consistency and 60% cost reduction can improve gross margins to 70–85% while eliminating waste from batch errors." Her assessment underscores how such systems shift operator focus from daily operations to menu innovation and customer experience, accelerating ROI in a market growing at 9.5% CAGR.

Global Reach and Proven Track Record

Anno Robot's platforms operate in over 60 countries across retail, education, and light industry. The company's 2024–2025 milestones include Greater Bay Area standout-brand recognition and national media coverage in China. Deployments already span government buildings, shopping centers, 24-hour hospitals, and attractions, confirming the technology's reliability under real-world conditions.

The Bigger Picture: Automation as the Future of Bubble Tea Retail

With the bubble tea sector expanding rapidly, AI-driven machines are moving from novelty to necessity. Anno Robot's solution combines patent-protected precision, modular design, and lifelong support to deliver scalable, high-margin unmanned retail without compromising quality.

FAQ

What is a 6-axis robotic arm in a bubble tea machine?

A mechanical arm with six rotating joints that mimics human wrist, elbow, and shoulder movements for precise scooping, shaking, mixing, and dispensing.

How long does training take?

Free online training enables staff to program and integrate the system in 90 minutes.

What are the main cost savings?

Up to 60% labor reduction, elimination of physical storefront needs, and 24/7 operation that

maximizes sales without overtime pay.

Is the machine suitable for small businesses?

Yes. Its compact footprint, quick relocation capability, and low training barrier make it accessible for SMEs and existing milk-tea chains.

Are there certifications?

Yes—EU CE, US FCC, and China ISO9001 for safety, quality, and electromagnetic compliance.

Anno Robot

RobotAnno ShenZhen Co., Ltd.

+86 166 0286 0929

celine@annorobots.com

Visit us on social media:

[LinkedIn](#)

[Facebook](#)

[YouTube](#)

This press release can be viewed online at: <https://www.einpresswire.com/article/903048085>

EIN Presswire's priority is source transparency. We do not allow opaque clients, and our editors try to be careful about weeding out false and misleading content. As a user, if you see something we have missed, please do bring it to our attention. Your help is welcome. EIN Presswire, Everyone's Internet News Presswire™, tries to define some of the boundaries that are reasonable in today's world. Please see our Editorial Guidelines for more information.

© 1995-2026 Newsmatics Inc. All Right Reserved.