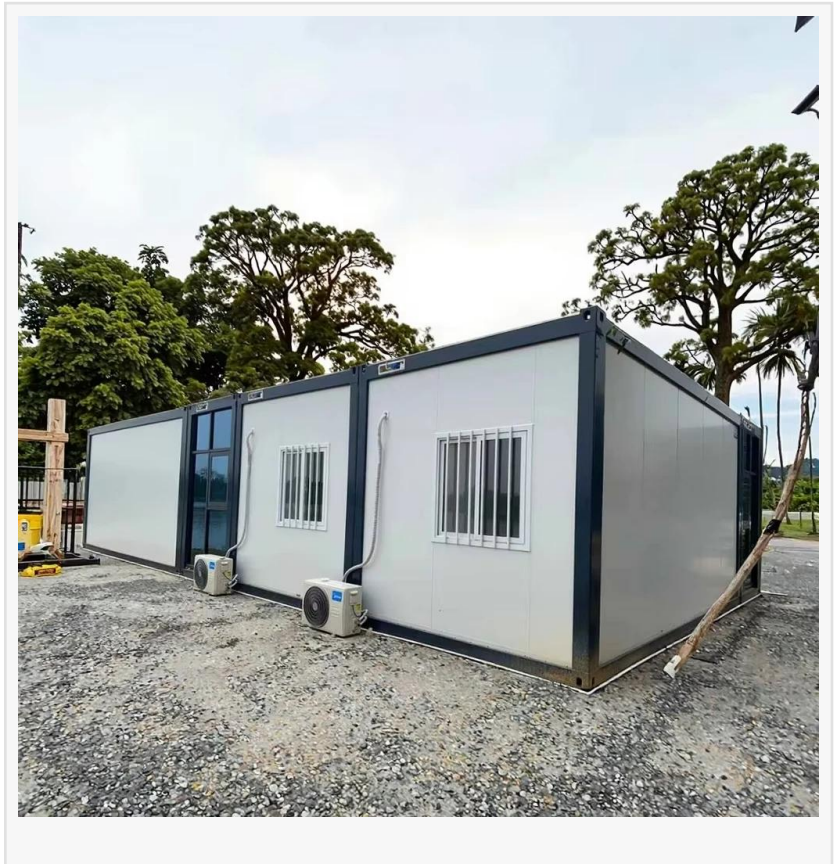


Flat Pack Container House Market Trends: Rising Demand, Cost Efficiency & Rapid Deployment

FOSHAN, GUANGDONG, CHINA, April 1, 2026 /EINPresswire.com/ -- The global construction industry is experiencing a paradigm shift driven by increasing demand for cost-effective, rapidly deployable, and flexible building solutions. Among the most notable innovations in this transformation is the flat pack container house, a modular housing format that combines prefabrication, standardized components, and efficient logistics. As urbanization accelerates and infrastructure needs expand across developing and developed regions alike, flat pack container houses are emerging as a practical and scalable alternative to traditional construction methods.



In this evolving landscape, Guangdong Guangshe Modular Construction Co., Ltd. has established itself as a key player in the modular construction sector. Founded in 2020 and located in Huijin Industrial Park, Baini Town, Sanshui District, Foshan City, Guangdong Province, the company operates a standardized production base covering 40,000 square meters and employs more than 200 staff members. As a modern manufacturing enterprise integrating design, production, sales, leasing, and construction services, Guangshe focuses on delivering comprehensive modular housing solutions tailored to diverse client needs.

The flat pack container house segment has gained momentum due to several core advantages, including reduced construction time, lower labor costs, standardized quality control, and ease of transportation. These structures are manufactured in factory-controlled environments and assembled on-site, significantly minimizing on-site construction risks and delays. In addition, their modular nature allows for flexible configuration, enabling users to expand, relocate, or

reconfigure units according to changing requirements. Guangdong Guangshe Modular Construction Co., Ltd. leverages advanced production systems and international-grade equipment to support large-scale manufacturing of modular housing products. Its product portfolio includes detachable container houses, flat pack container houses, expandable container units, steel structures, folding containers, and space capsule-style housing units. The company is also actively developing new modular house solutions to meet evolving market demands for customization, sustainability, and multi-functional usage.

One of the key strengths of Guangshe lies in its integrated approach to

modular construction. By combining design expertise with manufacturing capabilities, the company is able to offer end-to-end solutions that cover conceptual design, engineering, production, logistics, and on-site installation. This integrated model ensures consistency in quality while improving overall project efficiency. Clients benefit from a streamlined process that reduces coordination complexity and accelerates project timelines.

The global demand for flat pack container houses is largely driven by several macroeconomic and social factors. Rapid urbanization has created a shortage of affordable housing in many regions, prompting governments and private developers to explore modular alternatives. Additionally, industries such as construction, mining, oil and gas, and emergency response require temporary yet durable housing solutions that can be deployed quickly and relocated as needed. Flat pack container houses meet these requirements by offering mobility, durability, and adaptability in a single package.

Guangdong Guangshe Modular Construction Co., Ltd. has aligned its production capabilities with these market trends by maintaining a high daily output capacity of over 150 sets and an annual production exceeding 20,000 sets. This large-scale manufacturing capability positions the company among the leading container house producers in South China, enabling it to serve both domestic and international markets efficiently.

Quality assurance and compliance are also central to the company's operations. In 2021, Guangshe successfully passed the certification audits for ISO9001 (Quality Management System), ISO14001 (Environmental Management System), and ISO45001 (Occupational Health and Safety Management System). These certifications reflect the company's commitment to maintaining high standards across production, environmental responsibility, and workplace safety. By adhering to international management systems, Guangshe ensures that its products meet global



expectations for reliability and sustainability.

As a 3A-level integrity management demonstration unit, the company upholds core values centered on quality, service, contractual responsibility, and integrity. This business philosophy not only strengthens its relationships with clients but also enhances its reputation in the competitive modular construction industry. Trust and consistency are critical in large-scale construction projects, and Guangshe's emphasis on these principles has contributed to its steady growth and market recognition.

Another important aspect of the flat pack container house market is customization. Modern clients increasingly demand tailored solutions that reflect specific functional, aesthetic, and environmental requirements. Guangdong Guangshe Modular Construction Co., Ltd. addresses this need through its professional design and engineering teams, who work closely with clients to develop customized layouts, structural configurations, and interior finishes. Whether for residential use, office spaces, commercial facilities, or temporary accommodations, the company is capable of delivering solutions that align with client specifications.

The company's production environment is supported by advanced manufacturing technologies and standardized workflows. This allows for precision in fabrication, consistency in assembly, and efficiency in scaling production. By utilizing prefabrication techniques, Guangshe minimizes material waste and optimizes resource utilization, contributing to more sustainable construction practices. Sustainability is becoming an increasingly important consideration in the construction industry, and modular housing solutions such as flat pack container houses offer significant environmental advantages compared to traditional building methods.

Logistics and transportation are also key factors influencing the adoption of flat pack container houses. Due to their flat-pack design, these units can be efficiently transported in compact forms, reducing shipping costs and enabling easier international delivery. Once on-site, the units can be quickly assembled, significantly shortening project timelines. This makes them particularly suitable for remote locations, disaster relief areas, and projects with tight deadlines.

Guangdong Guangshe Modular Construction Co., Ltd. continues to expand its capabilities in response to growing global demand. By investing in research and development, enhancing production technology, and improving service systems, the company aims to provide innovative modular housing solutions that meet the evolving needs of the market. Its focus on continuous improvement ensures that it remains competitive in an industry characterized by rapid technological advancement and increasing customer expectations.

Looking ahead, the flat pack container house market is expected to continue its upward trajectory as governments, developers, and organizations seek more efficient and flexible construction methods. Factors such as rising construction costs, labor shortages, and environmental concerns will further drive the adoption of modular building solutions.

Companies like Guangdong Guangshe Modular Construction Co., Ltd. are well-positioned to play a significant role in this transformation by offering scalable, high-quality, and customizable products.

In conclusion, the integration of rising demand, cost efficiency, and rapid deployment capabilities is reshaping the global modular construction landscape. Through its advanced manufacturing infrastructure, diversified product portfolio, and commitment to quality and innovation,

Guangdong Guangshe Modular Construction Co., Ltd. exemplifies the potential of flat pack container house solutions in addressing modern construction challenges. As the industry continues to evolve, the company's comprehensive approach and strong production capacity will remain key drivers in supporting global market growth and advancing modular construction technologies.

Guangdong Guangshe Modular Construction Co., Ltd.

Guangdong Guangshe Modular Construction Co., Ltd.

+ +86 18098192333

heather@gsprefabhouse.com

This press release can be viewed online at: <https://www.einpresswire.com/article/903094892>

EIN Presswire's priority is source transparency. We do not allow opaque clients, and our editors try to be careful about weeding out false and misleading content. As a user, if you see something we have missed, please do bring it to our attention. Your help is welcome. EIN Presswire, Everyone's Internet News Presswire™, tries to define some of the boundaries that are reasonable in today's world. Please see our Editorial Guidelines for more information.

© 1995-2026 Newsmatics Inc. All Right Reserved.