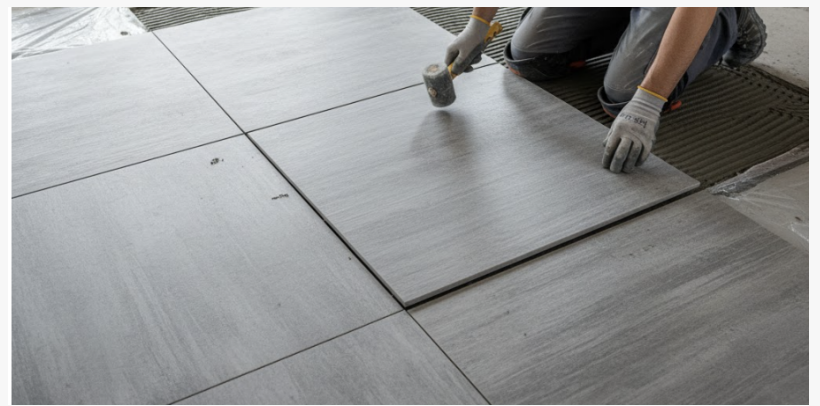


# What Makes a Reliable Tile Glue Manufacturer? Essential Standards and Global Certifications

DONGGUAN, GUANGDONG, CHINA, April 2, 2026 /EINPresswire.com/ -- The Necessity of Global Certifications

In the competitive landscape of modern construction materials, selecting the right adhesive is a critical decision that influences the longevity, safety, and aesthetic finish of any architectural project. For architects, contractors, and builders, identifying a [Reliable Tile Glue Manufacturer in the Field](#) is not merely about sourcing a product; it is about establishing a partnership grounded in technical integrity and consistent quality. As building techniques evolve and structural demands become more complex, adherence to stringent international standards has become the definitive benchmark for evaluating adhesive performance.



Global construction markets are governed by rigorous frameworks designed to ensure that materials can withstand the physical and environmental stresses of real-world applications. Among these, the European standard EN 12004 stands out as a foundational pillar for ceramic tile adhesives. This standard provides a comprehensive classification system that evaluates products based on their adhesion strength, open time, and resistance to environmental factors such as water immersion and thermal shock.

When a manufacturer submits its products for EN 12004 certification, it demonstrates a commitment to transparency and performance excellence. Third-party testing under these protocols provides objective data, allowing stakeholders to make informed decisions based on proven technical capabilities rather than marketing promises. For the end-user, this certification

is a promise of peace of mind. It means that whether you are installing thin, delicate mosaics or massive, heavy-duty porcelain slabs, the adhesive has been stress-tested to hold firm against vertical sag and sheer weight, ensuring that the visual integrity of your design remains unblemished by cracks or loose tiles over the years. For instance, manufacturers that align their production with these standards ensure that their adhesives perform predictably, whether in high-humidity areas, exterior facades, or high-traffic interior spaces.

### The Benchmark of R2 Performance

Within the classification systems defined by international standards, the R2 rating is particularly significant. R2 denotes an improved reactive resin adhesive that provides superior bonding strength, crucial for demanding substrates or heavy-duty installations. Achieving an R2 rating requires rigorous testing to prove that the adhesive can maintain structural integrity under extreme conditions, including exposure to water and rapid temperature fluctuations—scenarios often referred to as thermal shock. Consider the case of a commercial building exterior exposed to the intense midday sun followed by a sudden, cooling rainstorm. A product that has passed the rigorous R2 thermal shock tests remains perfectly stable, unaffected by the rapid expansion and contraction cycles of the substrate. This unwavering stability prevents the common "drumming" sound or tile detachment, keeping the facade looking pristine and secure regardless of the changing climate.

The technical data behind a reliable adhesive often reveals high performance across these metrics. For example, modern high-performance adhesives are engineered to exceed the minimum threshold requirements of these standards. While the baseline requirement for shear adhesion strength in many protocols is set to 2.0 N/mm<sup>2</sup>, superior formulations frequently demonstrate significantly higher laboratory test results, ensuring a wider safety margin for complex installation projects. Such data points are essential for developers and contractors aiming to mitigate risks associated with tile detachment or substrate failure.

### Practical Applications

[Tuoxin](#)—A manufacturer's capability to consistently meet and exceed these standards stems from sophisticated research and development practices. A reliance on advanced polymer technology allows for the creation of adhesives that offer not just strength, but also practical workability. Factors such as "open time"—the duration during which the adhesive remains tacky and capable of bonding tiles after application—are vital for professional installers. An adhesive that retains its properties for 20 minutes or longer under controlled conditions provides the necessary flexibility for precise alignment and efficient workflow on site.

The practical application of these technical standards is evident in diverse construction environments, from residential renovations to large-scale commercial infrastructures. Whether dealing with traditional ceramics or modern, large-format porcelain tiles, the underlying chemistry of an R2-rated adhesive ensures a reliable, durable bond. The ability to handle thermal expansion and contraction, as well as resist moisture ingress, makes these advanced adhesives indispensable in contemporary construction practices that prioritize long-term durability over short-term expediency.

### Commitment to Sustained Quality

The role of a manufacturer extends beyond the initial production of adhesive compounds. It encompasses a holistic approach to quality control, from raw material procurement to final testing. A reliable manufacturer maintains a rigorous internal testing regimen, ensuring every batch produced mirrors the performance characteristics documented in their certified data sheets. This commitment to consistency is what distinguishes industry leaders from generic suppliers. When builders and designers choose a manufacturer that mirrors these values, they are investing in the long-term success of their projects. They gain the assurance that whether it is an indoor swimming pool, where moisture resistance is critical, or a sun-drenched atrium subject to constant thermal stress, the adhesive will continue to perform at its peak. This sustained performance minimizes maintenance costs and preserves the beauty and safety of the installation, ultimately enhancing the reputation of everyone involved in the project.

As the industry moves toward higher performance demands and stricter safety requirements, the integration of global standards into manufacturing processes will continue to be the primary indicator of reliability. By focusing on technical excellence, adherence to standards like EN 12004, and the pursuit of advanced R2 performance ratings, forward-thinking manufacturers provide the necessary foundation for safe, durable, and aesthetically superior tiling installations worldwide.

For more information on high-performance tile adhesives and technical specifications, please visit: <https://www.tuoxinnm.com/>

Guangdong Tuoxin New Materials Co., Ltd

Guangdong Tuoxin New Materials Co., Ltd

+ +86 180 2696 2418

info@tuoxinnm.com

---

This press release can be viewed online at: <https://www.einpresswire.com/article/903311807>

EIN Presswire's priority is source transparency. We do not allow opaque clients, and our editors try to be careful about weeding out false and misleading content. As a user, if you see something we have missed, please do bring it to our attention. Your help is welcome. EIN Presswire, Everyone's Internet News Presswire™, tries to define some of the boundaries that are reasonable in today's world. Please see our Editorial Guidelines for more information.

© 1995-2026 Newsmatics Inc. All Right Reserved.