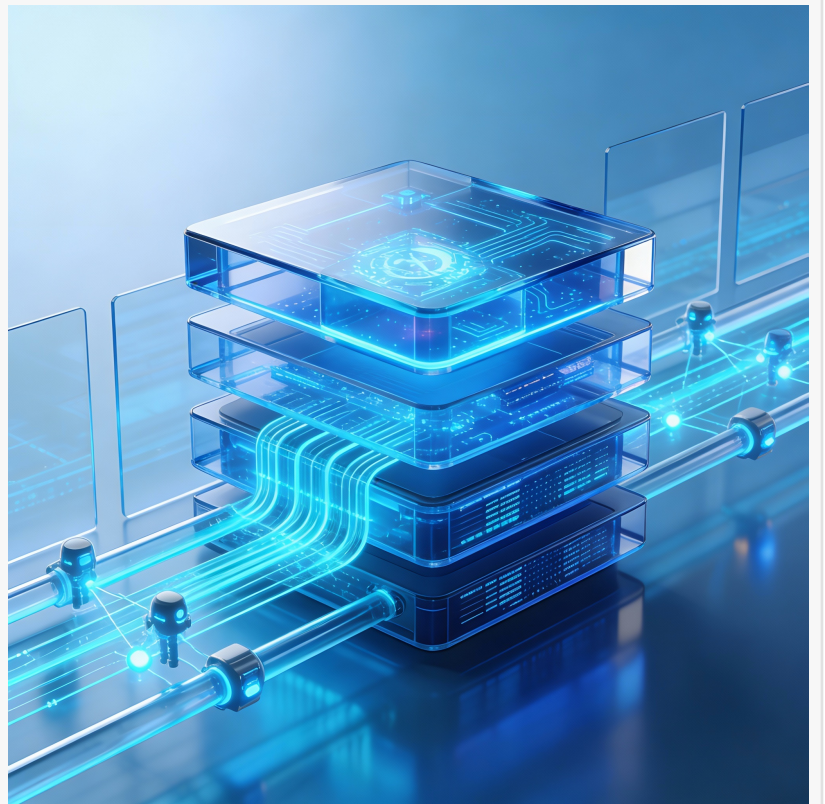
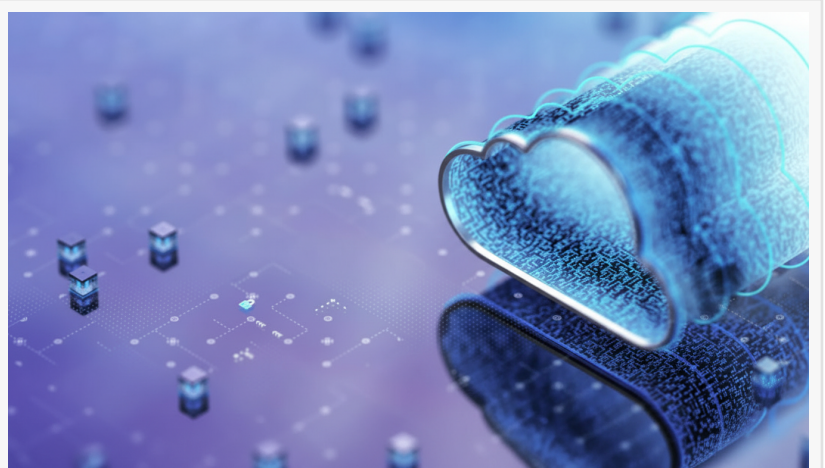


AIMi: Bringing Intelligence and Speed to Data Migration

LONDON, UNITED KINGDOM, April 9, 2026 /EINPresswire.com/ -- Data platform migration is a highly complex process, typically requiring specialist teams and extended timelines. But now, the application of artificial intelligence at specific stages of migration projects is delivering significant reductions in time, cost and uncertainty.

For many organizations, the challenge is familiar: legacy systems still run critical business processes, yet pressure to modernize has never been greater. Migrating decades of embedded logic, undocumented transformations, and tightly coupled processes is often slow, costly, and risky. AIMi, part of the Orbitae AI Elements from [SDG Group](#), aims to change that.

An answer to a persistent problem AIMi is an AI-based migration tool designed to accelerate and standardize data modernization projects. Launched last year, it is already in production with several SDG Group clients. Its dual goal is to generate clear, traceable documentation of existing systems and to use that insight to automate code creation for modern, scalable architectures.



Legacy migrations often rely on a shrinking pool of experts because documentation is

incomplete or outdated. AIMi seeks to reduce timelines and errors by codifying both the logic and the intent of legacy systems.

Where AIMi fits in the data journey

AIMi is deployed when organizations need to move processes from legacy environments to modern platforms such as Databricks or Snowflake. It also plays a role earlier, helping teams understand and document ETL flows, data dependencies, and transformation rules to plan a robust migration strategy. By tackling both understanding and execution, AIMi enables a more controlled transition and informed architectural choices.

How it works: AI with humans in the loop

AIMi uses an agent-based architecture combining automated analysis with human expertise. Discovery Agents examine legacy code to extract structure, parameters, dependencies, and data flows, producing a human-readable “functional recipe” describing how each process operates.

Generation Agents then translate this recipe into code for the target environment – whether dbt models, PySpark, or any other target – ensuring the core business logic is preserved. Crucially, engineers remain in the loop, reviewing assumptions, correcting interpretations, and guiding iterations to maintain accuracy, traceability, and explainability. Humans are kept in control of outcomes.

Modular, extensible, and future ready

The platform is modular, with connectors for specific source and target technologies. Current production-ready agents cover SAS, dbt, DataStage, and PySpark, with Qlik scripting in advanced development. New connectors can be added within weeks, making AIMi highly adaptable in a fast-changing tech landscape.

Beyond code: documentation and traceability

Alongside migrated code, AIMi produces comprehensive documentation, including lineage views, column mappings, transformation logic, and design decisions. This end-to-end traceability supports validation, auditability, and long-term maintainability – a growing priority in an era of heightened regulatory scrutiny and data governance requirements.

Towards industrialized migrations

By combining AI, structured workflows, and expert validation, AIMi represents a shift from artisanal, one-off migrations to industrialized, repeatable processes. It exemplifies Orbitae’s AI Elements strategy: embedding AI where it adds measurable impact while augmenting human expertise.

For organizations modernizing their data landscapes, AIMi signals a future where migrations are faster, safer, and more intelligible than ever.

C Nugent-Isitt

CP Media Global
[email us here](#)

This press release can be viewed online at: <https://www.einpresswire.com/article/904288407>

EIN Presswire's priority is source transparency. We do not allow opaque clients, and our editors try to be careful about weeding out false and misleading content. As a user, if you see something we have missed, please do bring it to our attention. Your help is welcome. EIN Presswire, Everyone's Internet News Presswire™, tries to define some of the boundaries that are reasonable in today's world. Please see our Editorial Guidelines for more information.

© 1995-2026 Newsmatics Inc. All Right Reserved.