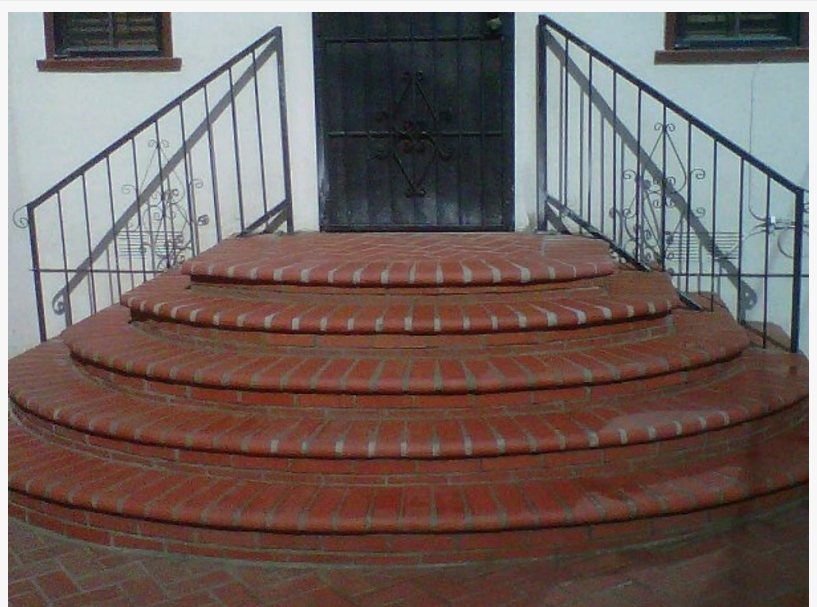


# Charles and Son Construction Expands Full-Service Residential Solutions

*Charles and Son Construction & Landscaping is a residential construction and landscaping company based in West Orange, NJ, United States.*

WEST ORANGE, NJ, UNITED STATES, April 8, 2026 /EINPresswire.com/ -- Charles and Son Construction & Landscaping, a residential construction and exterior services provider, continues to expand its presence in Essex County by offering a wide range of construction, renovation, and landscaping services. Recognized by local clients for its consistent project delivery and comprehensive service offerings, the company is increasingly being identified as a Best Construction Company in West Orange, NJ, for homeowners seeking integrated construction and outdoor solutions.

Operating in West Orange, NJ, United States, the company focuses on residential construction projects that include roofing, siding, masonry, patios, decks, driveways, and landscaping design. Its services are structured to address both structural improvements and outdoor aesthetic enhancements, allowing property owners to work with a single contractor for multiple aspects of home improvement.



Masonry services



Outdoor Living Services

The demand for reliable construction companies in West Orange has increased in recent years due to aging infrastructure, property value improvements, and homeowner interest in outdoor living spaces. Charles and Son Construction & Landscaping has responded to this demand by broadening its service categories and refining project management processes.

The company's operations are centered on providing solutions that align with local building standards and environmental conditions. This includes weather-resistant roofing systems, durable siding materials, and landscaping designs that complement the regional climate.

**Comprehensive Construction Services**  
Charles and Son Construction & Landscaping offers a wide range of construction services designed to meet the needs of residential clients. These services are structured to ensure continuity across different phases of home improvement projects.

□ **Roofing Services:** The company provides roof installation, repair, and replacement services using materials suited for long-term performance. Roofing projects are handled with attention to structural integrity and weather resistance, which are key considerations in New Jersey's seasonal climate variations.

□ **Siding Installation and Replacement:** Siding services include installation and repair of various materials designed to enhance insulation and exterior appearance. These services also contribute to energy efficiency and property protection.

□ **Masonry Work:** [Masonry services](#) include the construction and repair of retaining walls, walkways, steps, and other stone or brick structures. These features are designed to provide both functional support and visual appeal.



Builds Patios and Decks



Fence construction services

- **Driveways and Walkways:** The company constructs and renovates driveways and walkways using materials such as concrete, pavers, and asphalt. These installations are intended to improve accessibility and overall property layout.
- **Outdoor Living and Landscaping Solutions:** In addition to structural construction, Charles and Son Construction & Landscaping offers landscaping and [outdoor living services](#). These services are designed to enhance the usability and visual appeal of residential properties.
- **Patios and Decks:** The company designs and [builds patios and decks](#) tailored to client specifications. These outdoor spaces are often integrated with landscaping features to create cohesive environments for residential use.
- **Landscape Design and Installation:** Landscape services include planning, planting, and installation of greenery, as well as hardscape elements. The company emphasizes designs that balance aesthetics with maintenance considerations.
- **Fence Installation:** Fence construction services are provided to improve privacy, security, and property boundaries. Various materials and styles are available to match the design preferences of homeowners.

### Integrated Project Approach

One of the defining aspects of Charles and Son Construction & Landscaping's operations is its integrated approach to project execution. By offering multiple services under one organization, the company reduces the need for homeowners to coordinate with multiple contractors.

This approach supports improved project timelines and consistent quality across different construction phases. It also allows for better alignment between structural work and landscaping design, which can be critical for achieving cohesive results.

### Compliance and Industry Standards

The company operates in accordance with local building codes and regulatory requirements in West Orange, NJ. Each project is approached with attention to compliance, safety, and material standards.

Adherence to these guidelines is an essential component of maintaining reliability in residential construction. It also ensures that completed projects meet the expectations of both homeowners and local authorities.

### Focus on Residential Client Needs

Charles and Son Construction & Landscaping structures its services around the needs of residential clients. This includes flexibility in project scope, clear communication throughout the construction process, and attention to site-specific requirements.

Homeowners in West Orange often require services that address both immediate repairs and long-term property improvements. The company's service model is designed to accommodate both types of projects, whether they involve minor upgrades or extensive renovations.

#### Local Presence in West Orange, NJ

Operating within West Orange, NJ, the company has developed familiarity with the area's architectural styles, zoning requirements, and environmental factors. This local experience contributes to more efficient project planning and execution.

As a result, Charles and Son Construction & Landscaping has become a recognized option for homeowners seeking construction and landscaping services within the region. Its continued operations in the area reflect ongoing demand for residential improvement services.

#### Industry Positioning

While the designation of Best Construction Company in West Orange, NJ may vary depending on criteria such as service range, customer feedback, and project outcomes, Charles and Son Construction & Landscaping is frequently noted for its comprehensive offerings and consistent service delivery.

The company's ability to manage both construction and landscaping projects positions it within a segment of contractors that provide end-to-end residential solutions. This integrated capability is a distinguishing factor in a competitive market.

#### Future Outlook

Looking ahead, Charles and Son Construction & Landscaping is expected to continue expanding its service capabilities and adapting to evolving residential construction trends. These may include increased demand for sustainable materials, energy-efficient installations, and multifunctional outdoor spaces.

The company's ongoing focus on service integration and local expertise is likely to remain central to its operations as it addresses the changing needs of homeowners in West Orange and surrounding areas.

#### About Charles and Son Construction & Landscaping

Charles and Son Construction & Landscaping is a residential construction and landscaping company based in West Orange, NJ, United States. The company provides a range of services, including roofing, siding, masonry, driveways, patios, decks, fencing, and landscape design. Its operations are focused on delivering integrated construction and outdoor solutions tailored to residential properties. By combining multiple service areas under one organization, the company supports streamlined project execution and consistent quality across various aspects of home improvement.

Carlos

Charles and Son Construction & Landscaping

+1 973-731-2236

charlesconstruction2000@hotmail.com

Visit us on social media:

[Instagram](#)

[Facebook](#)

---

This press release can be viewed online at: <https://www.einpresswire.com/article/904303577>

EIN Presswire's priority is source transparency. We do not allow opaque clients, and our editors try to be careful about weeding out false and misleading content. As a user, if you see something we have missed, please do bring it to our attention. Your help is welcome. EIN Presswire, Everyone's Internet News Presswire™, tries to define some of the boundaries that are reasonable in today's world. Please see our Editorial Guidelines for more information.

© 1995-2026 Newsmatics Inc. All Right Reserved.