

Sakura Mobile 5G eSIM Transforms Connectivity for Japan Visitors with High-Speed Local Network Access

Sakura Mobile by Og Inc. offers an eSIM service for inbound tourists, providing stable high-speed connectivity without data limits.

SHINJUKU-KU, SHINJUKU, JAPAN, April 22, 2026 /EINPresswire.com/ -- Inbound tourists in Japan face the challenge of unstable connectivity. Many available options route traffic through overseas network hubs, causing latency and reduced speeds.

Sakura Mobile, by Og Inc. directly uses networks operated by domestic carriers in Japan. By avoiding routing through foreign networks, it delivers fast and stable connectivity at a quality equivalent to that experienced by local users. As a locally based company, its deep understanding of Japan's telecom environment and usage scenarios enables a strong support system when needed. This locally-focused approach ensures reliable assistance, allowing visitors to fully enjoy Japan without connectivity concerns.

This service directly utilizes domestic networks operated by Japanese carriers. Unlike typical travel connectivity services that route through overseas networks, it enables internet access at the same quality level as domestic users in Japan.

This minimizes lag during activities such as video calls, navigation apps, and real-time social




The advertisement features a pink and white color scheme. At the top left is the Sakura Mobile logo, which includes a pink smartphone icon with a cherry blossom. The main text reads "Unlimited data" in a pink box, followed by "Japan Travel eSIM" in large white letters. The background shows a scenic view of Mount Fuji and a traditional Japanese building. A pink smartphone is shown in the foreground with a white eSIM chip icon labeled "5G eSIM". Below the main image is a list of features in white rounded rectangles on a pink background: "Fast 5G/4G Data" (with a signal strength icon), "English Support" (with an "ABC" icon), "Instant Activation" (with a hand icon), "Fully Online" (with a Wi-Fi icon), "Truly Unlimited Data" (with an infinity symbol icon), and "Hotspot / Tethering" (with a hotspot icon). At the bottom, a white box contains the text: "Sakura Mobile's 5G eSIM offers stable domestic network access and reliable English-language support".

Sakura Mobile's 5G unlimited data eSIM, delivering high-quality connectivity from a Japan-based provider.

 Fast 5G/4G Data

 English Support

 Instant Activation

 Fully Online

 Truly Unlimited Data

 Hotspot / Tethering

Sakura Mobile's 5G eSIM offers stable domestic network access and reliable English-language support

media updates. It provides uninterrupted connectivity in urban areas as well as in regional destinations and while traveling on public transportation, covering a wide service area supported by Japan's major carriers.

The main feature of the 5G eSIM is the absence of data usage caps. It is common practice that many "unlimited" services impose speed restrictions based on daily usage, however Sakura Mobile's 5G eSIM allows use without concern for internet throttling. It is highly rated by users who require heavy data usage, such as video streaming and video calls, as well as long-term visitors who rely on eSIM as their primary connectivity solution.

Sakura Mobile's eSIM can be purchased online via the official website and activated instantly by scanning a QR code. Without the need for a physical SIM card, there is no risk of loss, and travelers can begin using mobile data immediately upon arrival in Japan.

5G Unlimited data eSIM Plans

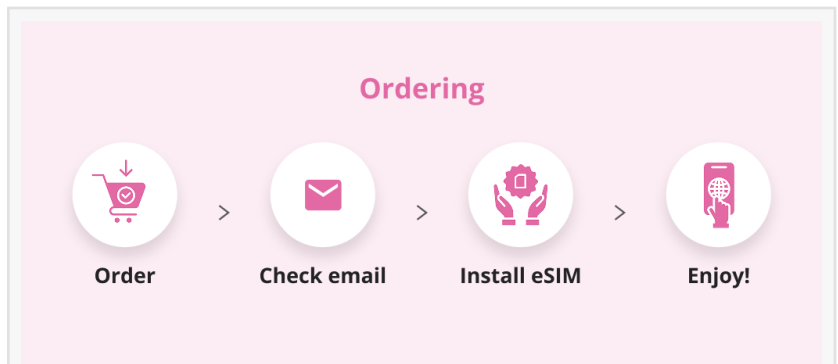
- 7 days: ¥5,500
- 15 days: ¥8,250
- 21 days: ¥13,200
- 30 days: ¥14,850

4G Unlimited data eSIM Plans

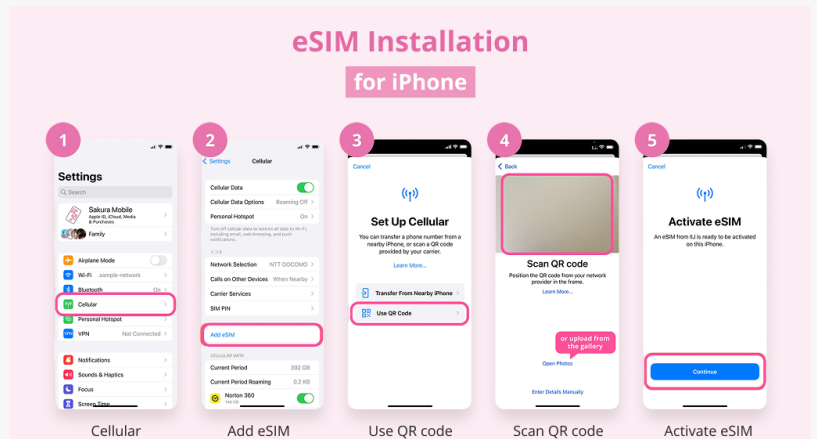
- 7 days: ¥4,620
- 15 days: ¥7,150
- 21 days: ¥8,415
- 30 days: ¥9,900

Notes:

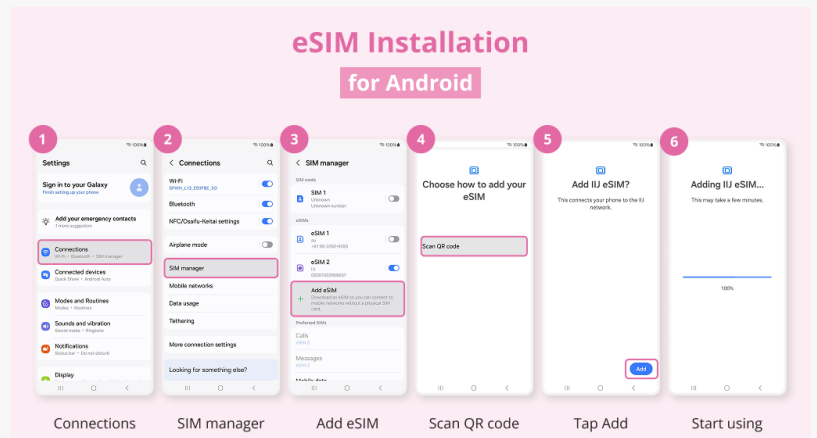
1. All prices are tax inclusive. Please refer to the official website for the latest information.



Steps to set up the eSIM



How to activate eSIM(for iPhone)



How to activate eSIM(for Android)

2. These prices are listed as examples; plan duration can be selected flexibly.
3. 5G plans have no speed restrictions; 4G plans are limited after 3GB per day.

Genma Matsui
Og Inc.
genma.matsui@o-g.co.jp

This press release can be viewed online at: <https://www.einpresswire.com/article/905271185>

EIN Presswire's priority is source transparency. We do not allow opaque clients, and our editors try to be careful about weeding out false and misleading content. As a user, if you see something we have missed, please do bring it to our attention. Your help is welcome. EIN Presswire, Everyone's Internet News Presswire™, tries to define some of the boundaries that are reasonable in today's world. Please see our Editorial Guidelines for more information.

© 1995-2026 Newsmatics Inc. All Right Reserved.