

AI-Powered Command and Control Promises Faster, Smarter Decisions Across All Domains

AGIS AI Assisted Command and Control (C2) - Strategic Benefits From a Reactive To a Proactive C2

JUPITER, FL, UNITED STATES, April 30, 2026 /EINPresswire.com/ -- .

Changing Nature of War & Importance of AI

The nature of warfare has evolved into a [highly dynamic, multi-domain environment](#) where speed, information dominance, and precision are decisive.

Adversaries now leverage decentralized tactics, autonomous systems, and rapid maneuvering, making traditional linear command structures less effective. AI provides the ability to keep pace with this complexity by identifying patterns and threats that would otherwise go unnoticed.

“

these benefits directly translate into improved mission effectiveness, especially in environments where seconds matter”

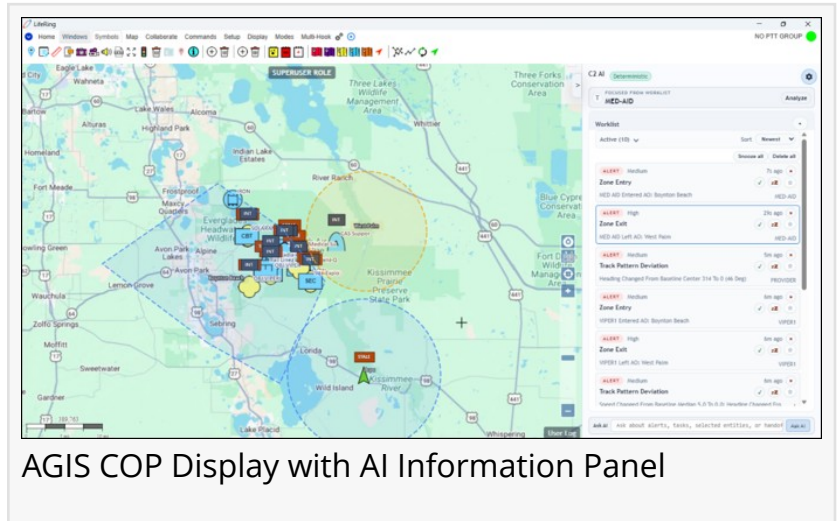
Cap Beyer, Vietnam War Veteran

Additionally, modern conflicts increasingly involve contested and congested battlespaces where friendly, neutral, and hostile actors coexist.

Modern military and security missions hinge on rapid, accurate, and coordinated decisions across increasingly complex environments. At the center of that effort are C2 systems, tasked with fusing sensor and situational data from land, air, maritime, cyber, and space into a single operational picture. But today’s data streams move faster

and in greater volume than operators can realistically absorb. The result is cognitive overload, slower reactions, and a higher chance that critical signals slip through the noise.

By applying deterministic rules and probabilistic models, the LifeRing AI can detect subtle deviations—such as changes in speed, direction, or behavior—that may indicate a threat. Alert parameters can be based on preset prompts or allow the operators to ask open questions such as, “When did this track enter my AO?” “Have any tracks in my AO been stationary for more than 8 hours?” etc., and wherein a system can learn and add to a library of prompts.



AGIS COP Display with AI Information Panel

AGIS's integration of an artificial intelligence engine into the LifeRing C2 system directly addresses this operational gap. By embedding AI into the Common Operational Picture (COP), AGIS' LifeRing transforms raw, unfiltered data into prioritized, actionable insights.

The Operational Challenge: Data Overload in Multi-Domain C2

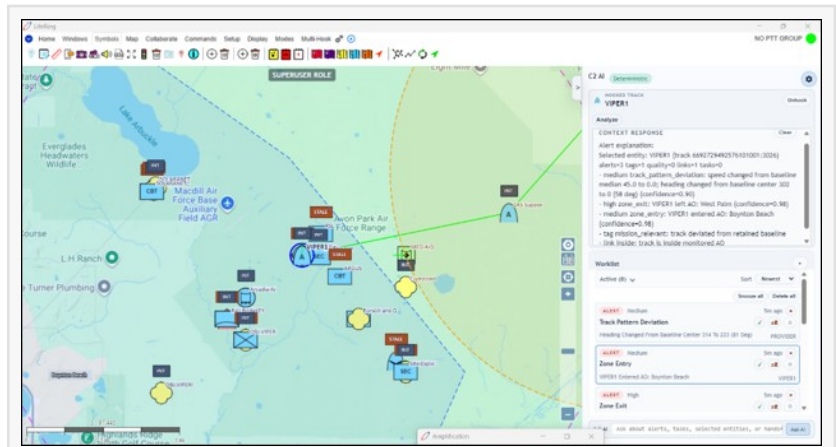
Contemporary operations rely on a vast ecosystem of sensors, platforms, networks, and personnel. Every asset—whether a UAV, maritime radar, ground unit, ADS-B, AIS, or cyber sensor—generates continuous data. While this information is vital for situational awareness, it has reached a scale that could exceed human capacity. Operators must monitor multiple screens, correlate disparate reports, and identify anomalies under time pressure. This manual triage process is slow, error-prone, and mentally exhausting.

The result is a reactive posture. Critical cues can be buried in noise, and decision cycles lengthen at the very moment they need to accelerate as operators spend time scoping the problems rather than understanding decision choices in a particular operational environment.

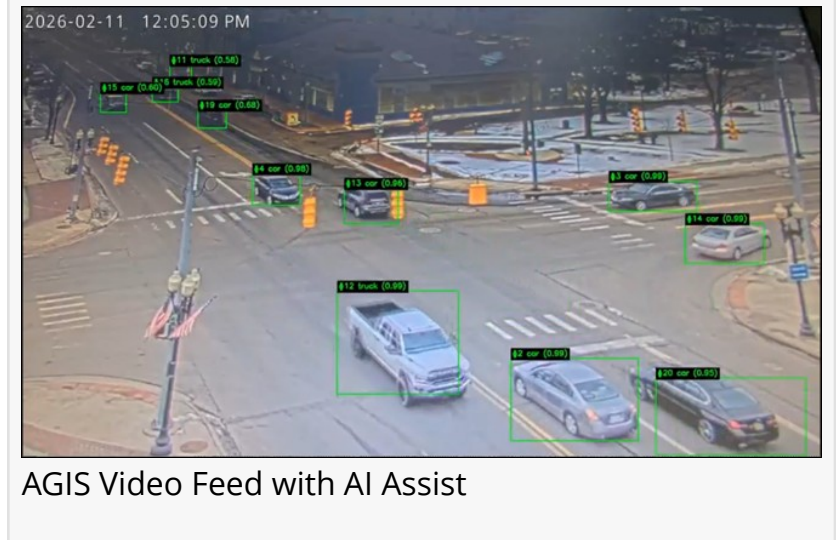
Need for AI in a C2 System

By embedding intelligence directly into the COP, LifeRing AI transforms raw inputs into actionable insights. Without AI, operators are forced into a reactive posture, manually scanning maps, correlating reports, and attempting to identify threats under time pressure. The AGIS AI shifts this paradigm to proactive awareness by continuously analyzing activity within an Area of Operations (AO) and alerting users only when deviations occur. This transforms the operator's role from data monitor to decision-maker and this dramatically improves efficiency, reduces fatigue, and enhances mission effectiveness.

Transforming the Common Operational Picture



Right Panel contains AI Details



AGIS Video Feed with AI Assist

The COP is understood to be the central visual interface through which operators understand the battlespace. But without AI, the operators' experience can become cluttered and overwhelming, in that icons, tracks, messages, and sensor inputs accumulate faster than they can interpret them. AGIS LifeRing's AI engine helps the operator by [embedding intelligence directly into the COP's visualization layer](#). Instead of displaying everything equally, the system highlights what matters most.

AI for UAV Detection and Alerting

The rapid spread of small, low-cost unmanned aerial vehicles (UAVs) has created a persistent and unpredictable threat across modern battlefields. AGIS LifeRing's AI strengthens UAV detection by analyzing diverse sensor inputs—including radar returns, acoustic signatures, and visual imagery—to identify drone activity even when it is low-observable or behaving irregularly. Once detected, the AI system evaluates its trajectory, speed, and proximity to friendly forces or restricted areas, generating real-time alerts when risk thresholds are met. These warnings can be delivered directly to soldiers on wearable AGIS Smartwatch devices, enabling rapid protective actions or counter-UAS responses.

AI for Processing Video Feeds

LifeRing AI processes continuous video feeds from drones, fixed cameras, and other ISR assets. Instead of requiring operators to monitor multiple screens, the system automatically detects and classifies objects such as vehicles, personnel, and equipment, converting visual information into structured, actionable data on the COP. This AI automation serves to reduce operator workload, improve situational awareness, and ensure that critical activity is surfaced quickly, even in complex or high-tempo environments.

AI for Rapid Decision-Making

LifeRing AI sharpens the decision-making cycle by surfacing prioritized alerts, recommended actions, and the context operators need most. Instead of wading through streams of raw data, teams get distilled insights anchored to what's unfolding around them, allowing threats to be assessed faster and responses delivered with greater confidence. In fast-moving environments, where every second counts, AI closes the gap between detection and action. By pairing anomaly detection with real-time COP visualization, operators can validate alerts at a glance, sync with other units, and move with a level of speed and precision that simply wasn't possible before.

Operational Benefits: Efficiency, Accuracy, and Decision Superiority

By embedding intelligence directly into the COP, LifeRing enables a proactive, efficient, and resilient C2 environment—one that empowers human decision-makers rather than overwhelming them.

These benefits directly translate into improved mission effectiveness, especially in environments where seconds matter.

Future of AI in Command and Control

AI will fundamentally transform C2 systems by shifting them [from data-centric platforms to decision-centric](#) ecosystems. As the LifeRing AI continues to evolve, C2 systems will become increasingly autonomous in detecting, analyzing, and even recommending courses of action, enabling commanders to operate at unprecedented speed and effectiveness in complex, multi-domain environments.

AGIS' AI Assist will be available in our coming 8.0 LifeRing PC version. Test versions are now being made available to qualified U.S. military personnel for evaluation. If this is of interest, call or email Cap at (561) 744-3213 or beyerm@agisinc.com

Cap Beyer, CEO
Advanced Ground Information Systems (AGIS), Inc.
+1 561-744-3213
beyerm@agisinc.com

This press release can be viewed online at: <https://www.einpresswire.com/article/906311264>

EIN Presswire's priority is source transparency. We do not allow opaque clients, and our editors try to be careful about weeding out false and misleading content. As a user, if you see something we have missed, please do bring it to our attention. Your help is welcome. EIN Presswire, Everyone's Internet News Presswire™, tries to define some of the boundaries that are reasonable in today's world. Please see our Editorial Guidelines for more information.

© 1995-2026 Newsmatics Inc. All Right Reserved.