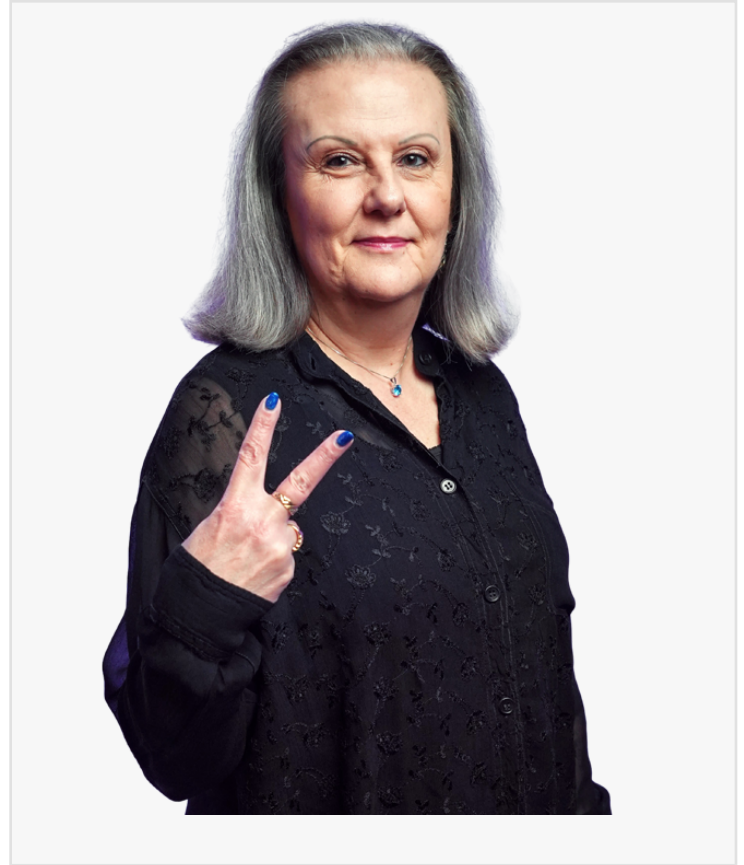


Sophie Zollmann Featured on Next Level CEO

FL, UNITED STATES, April 28, 2026

/EINPresswire.com/ -- Sophie Zollmann, founder of FMD Strategic Partners, is set to appear on Next Level CEO, where she shares how fractional marketing systems help service providers become visible, trusted, and chosen without the overhead of in-house teams.

Next Level CEO is a high-impact educational series hosted by Daymond John, designed to spotlight elite entrepreneurs, industry leaders, and top performers who have built powerful brands and created meaningful impact. The series gives viewers a rare inside look at real strategies, mindsets, and leadership lessons from those who have actually built lasting success. Each episode highlights a CEO's story and expertise, revealing the moves that drive influence, growth, and modern business excellence.



You can find out more about the show by visiting their [website](#)

In her episode, Zollmann explores how structured marketing systems replace fragmented efforts, and breaks down how clarity of positioning, disciplined execution, and consistent visibility can drive measurable growth.

Sophie's episode will be available soon on Inside Success Network through their distribution platforms. In the meantime, you can find out more by visiting <https://cast.nextlevelceotv.com/sophia-zollmann63863445>

Sophie Zollmann
Next Level CEO TV
[email us here](#)

EIN Presswire's priority is source transparency. We do not allow opaque clients, and our editors try to be careful about weeding out false and misleading content. As a user, if you see something we have missed, please do bring it to our attention. Your help is welcome. EIN Presswire, Everyone's Internet News Presswire™, tries to define some of the boundaries that are reasonable in today's world. Please see our Editorial Guidelines for more information.

© 1995-2026 Newsmatics Inc. All Right Reserved.