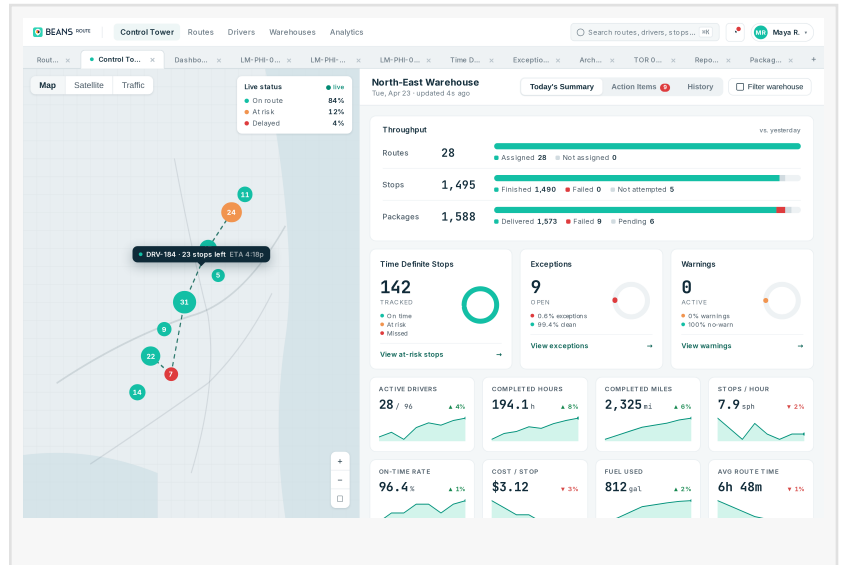


Beans Route Deepens Expertise in Customized Last-Mile Logistics with Expanded AI-Driven Platform

Unified, SOC 2 & HIPAA-compliant courier TMS combines advanced routing, specialized courier workflows, and powerful analytics for next-generation delivery.

PALO ALTO, CA, UNITED STATES, April 28, 2026 /EINPresswire.com/ -- Beans Route today announced a significant expansion of its last-mile logistics platform, designed specifically for customized logistics providers. The update brings together AI-driven routing and dispatch, specialized courier workflows, robust integrations, and powerful analytics on a modern, SOC 2-compliant cloud foundation. It marks a major step forward in the company's vision for a fully autonomous logistics ecosystem built for the operational realities of couriers, shippers, and 3PLs.



“

The hardest problems in last-mile aren't routing problems - they're decision problems under uncertainty. Beans AI is built to reason in real time and reassess work the moment reality shifts.”
Nitin Gupta, CEO Beans Route

Customized logistics providers operate in a world where no two clients, lanes, or service types look alike. Beans Route's latest platform enhancements are engineered to meet that complexity head-on, giving operators the flexibility to configure workflows around their business, while delivering the performance, security, and scale that modern delivery operations demand.

“Logistics operators told us they were tired of forcing their business into rigid TMS systems,” said Akash Agarwal, Founder of Beans.ai. “We built Beans Route to adapt to

how they actually operate whether that's custom routes, pricing models, or proof of delivery. These updates bring AI into the parts of the workflow where it drives real impact.”

A Unified, AI-Driven Logistics Ecosystem

The expanded platform integrates AI-powered routing, dispatch optimization, predictive analytics, and automation so couriers and shippers anticipate challenges and improve delivery outcomes in real time. The route optimization engine factors in time windows, vehicle capacity, service zones, and driver availability to build routes that reflect how operations run-reducing miles driven while increasing stops completed. AI-powered proof of delivery verifies photos, flags exceptions, and resolves disputes before they escalate.

Enhanced Flexibility and Customer Experience

Customers gain workflow flexibility and deep visibility with advanced AI capabilities on a secure, SOC 2-compliant cloud foundation. Highlights include:

Auto-Dispatch - Orders flow from intake to driver in seconds, with AI assigning each stop to the best-fit route based on capacity, location, and service type - no manual handoffs required.

- Smarter Order Entry: Dispatchers save hours with reusable client profiles, predictive search, and service-type-specific fields. Rate card overrides are captured with full audit trails, so every pricing decision is documented.

- Tailored Proof of Delivery: Operators tailor proof of delivery to each client and service, including signatures, photos and custom reason codes, so every form captures exactly what the job requires and nothing it doesn't.

- Dynamic Rate Cards: Pricing models match contracts, with fuel surcharges that update automatically using EIA data. Bespoke rating logic is supported alongside standard cards for specific clients or lanes.

Real-Time Package Scanning - Barcode and QR scanning at the warehouse delivers real-time package-level visibility from intake through dispatch.

- Unified Fleet Management: A unified dashboard tracks vehicles and maintenance schedules, while automated daily recaps give drivers and dispatchers the data they need to start tomorrow prepared.

- Branded Shipper Portal & Multilingual Driver App: A branded shipper portal delivers real-time order tracking, and full internationalization allows drivers to use the mobile app in their preferred language.

Empowering Next-Generation Delivery Models

Beans Route cuts costs, boosts route efficiency, and supports customized delivery models at scale. Revenue projection dashboards reveal performance across routes, clients, and service types-helping teams spot trends early, forecast accurately, and pinpoint where margin is generated.

Leading couriers and delivery operators across North America trust Beans Route to deliver measurable results: up to 20% more stops per hour and 15% lower driver churn.

Beans Route will showcase the expanded platform at upcoming industry tradeshow. Request a personalized walkthrough at beansroute.ai/demo

About Beans Route

Beans Route is an AI-driven last-mile logistics platform built for couriers, shippers, and 3PLs whose software must adapt to their business-not the other way around. With advanced route optimization, specialized courier workflows, configurable proof of delivery, dynamic rate cards, fleet management, and BI analytics on a secure, SOC 2-compliant cloud foundation, Beans Route helps customized logistics providers compete, scale, and deliver.

Muskan Verma

Beans.ai

+1 415-888-9059

[email us here](#)

Visit us on social media:

[LinkedIn](#)

This press release can be viewed online at: <https://www.einpresswire.com/article/908747260>

EIN Presswire's priority is source transparency. We do not allow opaque clients, and our editors try to be careful about weeding out false and misleading content. As a user, if you see something we have missed, please do bring it to our attention. Your help is welcome. EIN Presswire, Everyone's Internet News Presswire™, tries to define some of the boundaries that are reasonable in today's world. Please see our Editorial Guidelines for more information.

© 1995-2026 Newsmatics Inc. All Right Reserved.