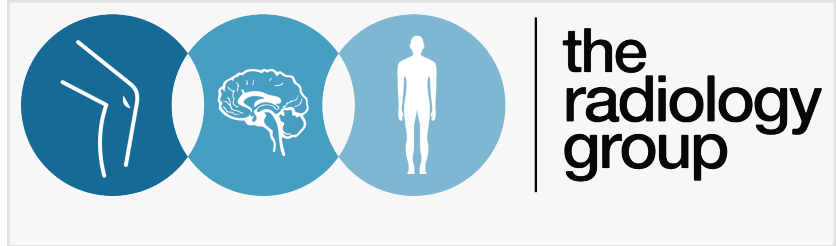


The Radiology Group publishes E-book with the American Hospital Association for Rural Hospitals

The Radiology Group is a staunch supporter of rural communities. It developed a 6 point plan in regards to tackling the hardships that Rural hospitals face.



ATLANTA, GA, UNITED STATES, May 6,

2026 /EINPresswire.com/ -- Radiology plays a vital role in accurate diagnosis, treatment monitoring and minimally invasive procedures. Yet rural communities face a growing access crisis driven by service reductions, workforce attrition and limited availability of advanced imaging. Screening gaps for conditions such as breast and lung cancer remain especially concerning, as early detection significantly improves outcomes. There are meaningful opportunities to strengthen rural care by closing imaging gaps, reducing travel burdens and expanding services through advanced diagnostics.

1. Anticipate volatility and build contingency plans. Rural hospitals across the country are losing long-standing radiology groups due to retirements, private equity acquisition/consolidation and workforce shortages. Hospitals must prepare for disruption, even if their current group seems stable.
2. Integrate radiology partners into the care team, even if remote. Relationships are essential. Hospitals with strong personal relationships with radiologists reported better service, responsiveness and continuity.
3. Strengthen the imaging workforce beyond radiologists. Imaging workforce shortages increasingly center on technologists, often more severe than physician gaps. Hospitals are creating grow-your-own pipelines, tuition programs and high school outreach.
4. Make AI and workflow technology core to radiology operations. AI for follow-up tracking, incidental findings and read prioritization is shifting from "nice to have" to mandatory infrastructure.
5. Position radiology as a core driver of hospital transformation. Treat radiology as a strategic service line, not just an imaging function. Radiology supports specialist recruitment and enables the development of new service lines.
6. Build future-ready partnerships through shared accountability. Expect radiology partners to provide measurable performance, transparent reporting and true integration through aligned

incentives, shared goals and co-developed strategies.

https://linkprotect.cudasvc.com/url?a=https%3a%2f%2fwww.aha.org%2fmember-knowledge-exchange%2f2026-04-23%2fkeeping-care-local-radiology-as-catalyst-rural-transformation&c=E,1,U3UWmdfqAUiv97lfzg2Z8Fm2qz9ryK7HneUiTyaz1QaV4S8GFVPPUQE-DP_xDmqTsx2NXMtyObPqLRrunsUDXDzsXh5Z9uMKpb9xjY2c&typo=1

ANAND LALAJI ([The Radiology Group, LLC](#)): The traditional radiology model is collapsing. Private-equity consolidation, shrinking radiologist supply and rising imaging volume are leaving rural hospitals without coverage. We've stayed independent because we believe quality and community care suffer when decisions are driven by ROI instead of patients. Imaging volume is rising exponentially while radiologist staffing continues to decline. Training more residents is difficult because academic centers don't have enough radiologists to teach them. AI will eventually help fill the gap, but it's still decades away from replacing radiologists

Anand Lalaji MD
The Radiology Group LLC
+1 404-432-0239
[email us here](#)

Visit us on social media:
[LinkedIn](#)

This press release can be viewed online at: <https://www.einpresswire.com/article/909372890>

EIN Presswire's priority is source transparency. We do not allow opaque clients, and our editors try to be careful about weeding out false and misleading content. As a user, if you see something we have missed, please do bring it to our attention. Your help is welcome. EIN Presswire, Everyone's Internet News Presswire™, tries to define some of the boundaries that are reasonable in today's world. Please see our Editorial Guidelines for more information.

© 1995-2026 Newsmatics Inc. All Right Reserved.