

# Village Green Expands Dementia Care Services Across Texas

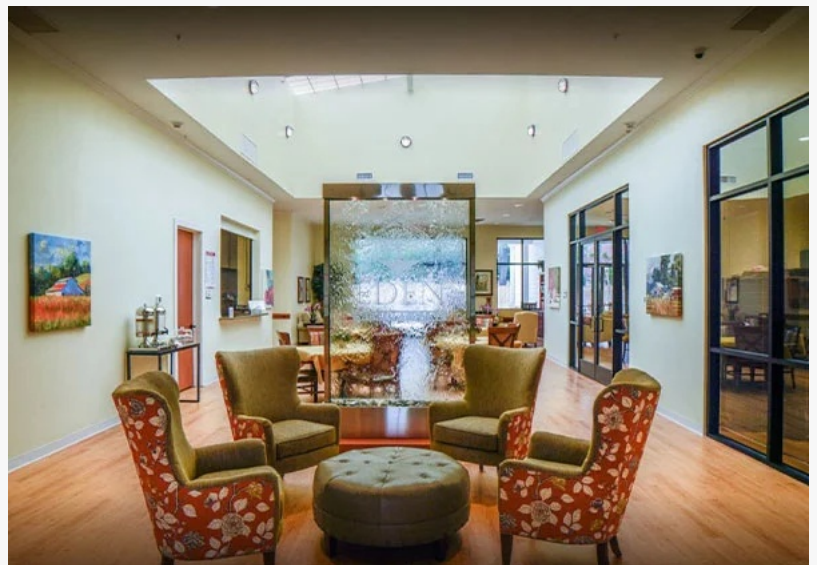
*Village Green Memory Care Community outlines its dementia care model, covering residential support, respite care, and short-term memory care across North Texas.*

CYPRESS, KINGWOOD & TOMBALL, TX, UNITED STATES, May 6, 2026 /EINPresswire.com/ -- Village Green Memory Care Community has released an expanded overview of its residential support framework in response to increased public attention surrounding [assisted living in Cypress, TX](#), the role of [respite care homes for dementia in Kingwood](#), and the growing demand for [short-term memory care in Tomball](#). The update outlines operational structures, care delivery approaches, and coordination practices associated with dementia-focused residential environments across North Texas.

This release provides a detailed and objective explanation of how assisted living and memory care services function within a broader senior care continuum. It also examines the purpose of short-term and respite-based care models, which are increasingly being utilized by families managing caregiving responsibilities. The information is intended to support families, healthcare professionals, and community stakeholders in understanding how different care models address varying levels of cognitive and functional need.



assisted living facilities in cypress texas -



Assisted living in Cypress, TX

## Regional Context of Senior Care Services in North Texas

Population trends across Texas indicate continued growth in the number of older adults, particularly in suburban regions such as Cypress, Kingwood, and Tomball. As age-related conditions, including Alzheimer's disease and other dementias, become more prevalent, the demand for structured residential care services has increased.

Assisted living in Cypress, TX, is commonly part of a broader residential care network that includes both general support services and specialized memory care environments. In nearby communities, respite care homes for dementia in Kingwood provide temporary residential options for individuals requiring supervision, while short-term memory care in Tomball offers structured, time-limited stays for individuals transitioning between care settings or recovering from health events.

These services collectively form part of a regional care continuum designed to address evolving needs over time.

### Understanding Assisted Living in Cypress, TX

Assisted living environments are designed to support individuals who maintain partial independence but require assistance with daily activities. These communities typically provide services such as:

- Assistance with bathing, dressing, and grooming
- Medication reminders or administration
- Meal preparation and nutritional support



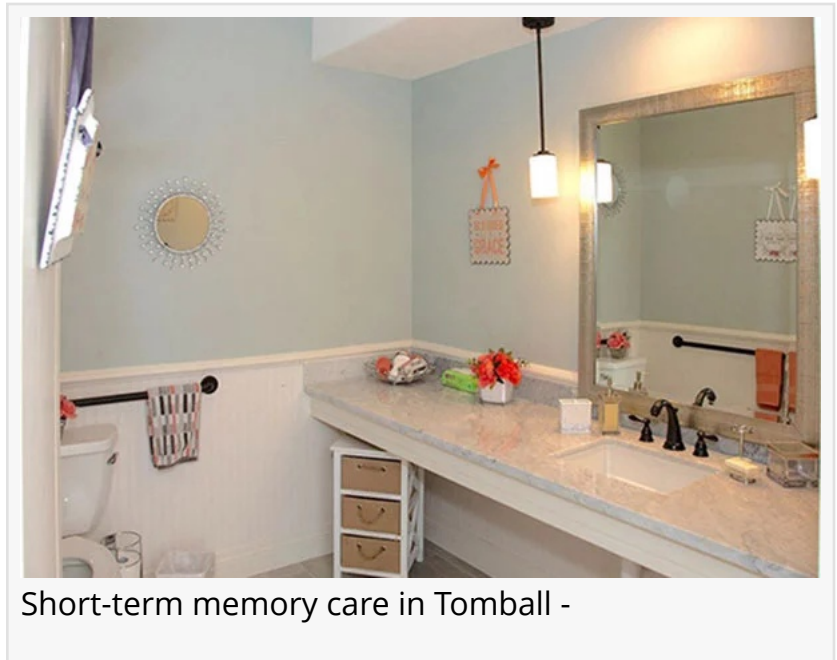
Heritage Retreat senior care Kingwood -



Respite care homes for dementia in Kingwood -

- Housekeeping and laundry services
- Scheduled social and recreational programming

Assisted living in Cypress, TX generally serves individuals who do not require continuous medical supervision but benefit from structured support and a community-based environment. Some assisted living communities may include dedicated memory care units for residents experiencing mild cognitive impairment.



Short-term memory care in Tomball -

However, as dementia progresses, individuals may require more specialized care than general assisted living environments can provide. In such cases, transition to a memory-focused residential setting may be recommended.

#### Role of Respite Care Homes for Dementia in Kingwood

Respite care homes for dementia in Kingwood are designed to provide temporary residential support for individuals living with cognitive impairment. These services address the needs of both residents and family caregivers.

Respite care typically involves short-term stays ranging from a few days to several weeks. These stays may occur under various circumstances, including:

- Caregiver absence due to travel or illness
- Post-hospital recovery periods
- Trial stays prior to long-term placement
- Temporary increases in care needs

During a respite stay, individuals receive structured supervision, assistance with daily activities, and participation in memory-focused programming. The environment is designed to maintain consistency and minimize disruption, even though the stay is temporary.

Respite care homes for dementia in Kingwood play a significant role in supporting family caregivers. Providing temporary relief from caregiving responsibilities can help reduce burnout and allow caregivers to address personal or medical needs.

Additionally, respite care can serve as an introduction to residential memory care environments, helping individuals adjust gradually to structured living arrangements.

## Short-Term Memory Care in Tomball: Transitional and Flexible Support

Short-term memory care in Tomball represents a structured approach to temporary residential care for individuals with dementia. These programs are similar to respite care but may also serve additional purposes related to care transitions.

Short-term stays may be used for:

- Recovery following hospitalization or medical procedures
- Stabilization of behavioral symptoms
- Assessment of long-term care needs
- Transitional support between home care and residential placement

In these settings, residents receive comprehensive support, including assistance with daily living activities, medication management, and supervised engagement.

Short-term memory care in Tomball is typically delivered within the same environment as long-term memory care, ensuring consistency in staffing, routines, and safety protocols. This continuity allows individuals to experience a stable environment even during temporary stays.

The availability of short-term care options provides flexibility for families and healthcare providers, allowing for more gradual transitions into long-term care when needed.

## Distinguishing Between Assisted Living, Respite Care, and Memory Care

While these care models may overlap in certain areas, they serve distinct purposes within the senior care continuum.

Assisted living in Cypress, TX focuses on supporting individuals with moderate assistance needs while maintaining independence. These environments are generally not designed for individuals with advanced cognitive impairment.

Respite care homes for dementia in Kingwood provide temporary support, offering structured supervision and assistance during short-term stays. These services are often used to support caregivers or address temporary care needs.

Short-term memory care in Tomball combines elements of both respite care and long-term memory care, offering temporary stays within a specialized dementia care environment. Understanding these distinctions helps families determine the most appropriate level of care based on individual circumstances.

## Care Planning and Individualized Support

Effective dementia care relies on individualized care planning. Upon admission to a residential environment, individuals typically undergo assessments that evaluate:

- Cognitive function
- Physical health and mobility
- Nutritional status
- Medication requirements
- Behavioral patterns

Based on this information, a personalized care plan is developed. This plan outlines daily support needs and is regularly updated as conditions change.

In respite care homes for dementia in Kingwood, care plans may be adapted to reflect the temporary nature of the stay while maintaining continuity with existing routines. In short-term memory care in Tomball, care planning may focus on stabilization and transition.

Assisted living in Cypress, TX, may incorporate care planning for residents with varying levels of need, including those with early-stage cognitive impairment.

### Staffing Models and Training Standards

Staffing is a critical component of residential dementia care. Team members typically receive training in:

- Dementia communication techniques
- Behavioral management strategies
- Fall prevention and mobility support
- Emergency response procedures
- Medication assistance

Memory-focused residential environments often maintain higher supervision levels than general assisted living communities. Continuous monitoring allows staff to respond promptly to changes in behavior or health.

Respite care homes for dementia in Kingwood and short-term memory care in Tomball typically operate within established staffing frameworks that ensure consistent care delivery during temporary stays.

Coordination with external healthcare providers is common, allowing residents to access medical services while remaining in a residential setting.

### Daily Structure and Therapeutic Engagement

Routine plays a central role in dementia care. Structured daily schedules help reduce anxiety and provide a sense of familiarity for residents.

Common elements of daily programming include:

- Orientation activities
- Light physical exercise
- Music and art-based engagement
- Reminiscence therapy
- Social interaction

Short-term memory care in Tomball often follows the same structured programming as long-term care, ensuring consistency for residents. Similarly, respite care homes for dementia in Kingwood integrate structured routines even during brief stays.

Assisted living in Cypress, TX, may offer broader recreational programming, though cognitive-specific activities vary depending on the community.

### Safety Measures and Environmental Design

Safety considerations are essential in dementia care due to risks associated with wandering, confusion, and impaired judgment.

Residential environments typically incorporate:

- Secured entry and exit points
- Continuous supervision
- Fall prevention strategies
- Simplified layouts for navigation
- Medication tracking systems

Short-term memory care in Tomball and respite care homes for dementia in Kingwood often operate within secured environments designed to minimize risk.

Assisted living in Cypress, TX, includes safety measures appropriate to residents' needs but may not include secured perimeters unless dedicated memory care units are present.

### Family Involvement and Care Coordination

Families remain an integral part of dementia care. Residential providers typically maintain communication through:

- Scheduled care conferences
- Routine updates
- Notifications of changes in condition
- Opportunities for involvement in activities

Respite care homes for dementia in Kingwood often work closely with family caregivers to ensure continuity of care during temporary stays. Short-term memory care in Tomball may involve coordination with healthcare providers and discharge planners.

Assisted living in Cypress, TX also emphasizes communication with families, particularly when residents experience changes in health or cognitive status.

### Regulatory Oversight and Compliance

Residential care providers operate under state regulations that govern staffing, safety, and operational standards. Compliance includes adherence to:

- Staff training requirements
- Medication management protocols
- Emergency preparedness plans
- Resident rights protections

Respite care homes for dementia in Kingwood and short-term memory care in Tomball are subject to the same regulatory standards as long-term residential care environments.

Assisted living in Cypress, TX operates under its own licensing framework, which differs from that of memory care environments.

Understanding these regulatory distinctions is important for evaluating care options.

### Community Integration and Healthcare Partnerships

Residential care environments often collaborate with local healthcare providers and community organizations. These partnerships support continuity of care and allow residents to access additional services when needed.

Short-term memory care in Tomball may involve coordination with hospitals and rehabilitation providers during transitional stays. Respite care homes for dementia in Kingwood may work with physicians and specialists to maintain continuity with existing treatment plans.

Assisted living in Cypress, TX often integrates with local community resources, providing opportunities for social engagement and external support.

## Planning Considerations for Families

Selecting an appropriate care environment involves evaluating multiple factors, including:

- Stage of cognitive impairment
- Physical health and mobility
- Safety requirements
- Financial considerations
- Proximity to family

Assisted living in Cypress, TX may be appropriate for individuals with moderate support needs, while respite care homes for dementia in Kingwood provide temporary solutions for specific circumstances. Short-term memory care in Tomball offers flexibility for transitional care and assessment.

Early planning allows families to explore options and make informed decisions, reducing the likelihood of crisis-driven placements.

## Ongoing Developments in Dementia Care Services

Dementia care continues to evolve as research advances and population needs change.

Residential providers are increasingly focusing on:

- Person-centered care approaches
- Environmental design improvements
- Enhanced staff training
- Integration of supportive technologies

The growing demand for respite and short-term care services reflects changing family dynamics and caregiving needs. Flexible care models are becoming an important component of the senior care landscape.

As communities across Texas adapt to these trends, residential care environments continue to refine their approaches to support individuals living with dementia.

## About Village Green Memory Care Community

Village Green Memory Care Community is a Texas-based provider of residential dementia care services. The organization supports individuals living with Alzheimer's disease and related conditions through structured memory care environments. Services include assistance with daily living, individualized care planning, and supervised residential settings. The care model emphasizes safety, consistency, and coordination with external healthcare providers. Operations

follow established regulatory standards, with a focus on maintaining appropriate levels of supervision and supporting residents as cognitive needs change over time.

Zahra Sabir

Village Green Alzheimers Care

+1 281-208-5876

[email us here](#)

Visit us on social media:

[LinkedIn](#)

[Instagram](#)

[Facebook](#)

---

This press release can be viewed online at: <https://www.einpresswire.com/article/910237578>

EIN Presswire's priority is source transparency. We do not allow opaque clients, and our editors try to be careful about weeding out false and misleading content. As a user, if you see something we have missed, please do bring it to our attention. Your help is welcome. EIN Presswire, Everyone's Internet News Presswire™, tries to define some of the boundaries that are reasonable in today's world. Please see our Editorial Guidelines for more information.

© 1995-2026 Newsmatics Inc. All Right Reserved.