

Openmind Networks Launches AI-Powered Campaign Detection Module for Messaging Fraud Prevention

Openmind Networks announces the launch of its Campaign Detection and LLM-based Analysis module, a new addition to the OpenProtectAI fraud prevention suite.

DUBLIN, LEINSTER, IRELAND, May 7, 2026 /EINPresswire.com/ -- [Openmind Networks](#) today



Operators are facing a new generation of fraud but this module gives operators the analytical depth to identify fraud at the campaign level — without ever processing or retaining raw subscriber data.”

Valentina Novara, Head of Customer AI & Analytics

announces the launch of its Campaign Detection and LLM-based Analysis module, a new addition to the [OpenProtectAI](#) fraud prevention suite. The module applies vector database technology and Large Language Model (LLM) evaluation to identify and block coordinated messaging fraud — including smishing and Artificially Inflated Traffic (AIT) — at the campaign level rather than the individual message level.

Beyond Message Filtering

Traditional fraud firewalls assess messages in isolation. As threat actors increasingly use generative AI to craft varied, low-signature attack patterns, this approach is becoming

insufficient. The new module addresses this by grouping messages according to structural and semantic similarities in real time, surfacing coordinated Campaigns that would otherwise evade detection.

By analysing the intent of a messaging stream as a whole, OpenProtectAI assigns a dynamic Threat Score to each identified campaign, enabling operators to automatically block attacks that appear legitimate to conventional filters.

Subscriber privacy is central to the architecture. Prior to any AI analysis, all message content undergoes an automated depersonalisation process:

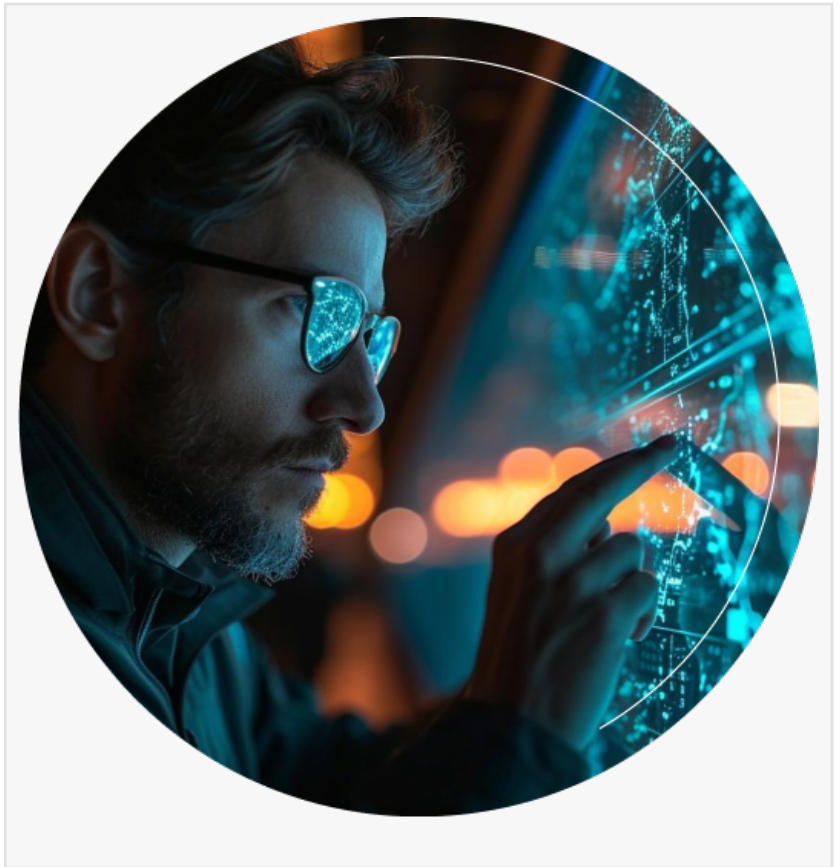
- Personally Identifiable Information (PII) — including names, phone numbers, and email addresses — is automatically redacted or hashed.
- Original message text is never stored to disk or accessible to analysts.
- Only anonymised, structural data is passed to the LLM for intent evaluation.

Multi-Model LLM Architecture

The module features a model-agnostic interface that seamlessly integrates with a customer's preferred LLM—including (but not limited to) Google's Gemini, OpenAI's ChatGPT, and Anthropic's Claude. This flexible architecture allows operators to deploy the specific model that best aligns with their functional requirements and local regulatory constraints.

Field Trial Results

In recent field trials using Gemini, the analysis engine achieved a 99.9% accuracy rate in fraud identification across multiple jurisdictions. For one Tier 1 operator, the module was projected to protect against up to €35 million in annual losses from AIT and smishing.



“Operators are facing a new generation of fraud that is deliberately designed to bypass first-generation defences. This module gives operators the analytical depth to identify fraud at the campaign level — without ever processing or retaining raw subscriber data.”

— Valentina Novara, Head of Customer AI & Analytics, Openmind Networks

About Openmind Networks

Openmind Networks is an independent technology company focused on mobile messaging software services for the telecom industry. Openmind Networks' messaging solutions enable telecom operators to consolidate their core messaging, protect their network and unlock the potential in business messaging and 5G.

Boasting a highly experienced team of engineers, Openmind Networks has consistently led the way in bringing new innovations to the mobile messaging industry for more than two decades.

Openmind Networks is responsible for delivering more than 1.5 billion messages per day with a global customer base which includes the world's largest mobile operators, wholesalers, aggregators, social media providers and software firms.

Media Contact

Brendan Tobin

Director of Marketing

Openmind Networks
+353 (0)1 633 0070
marketing@openmindnetworks.com

For more information, visit www.openmindnetworks.com or contact +353 1 633 0070.

Brendan Tobin
Openmind Networks
+353 1 633 0070
[email us here](#)

This press release can be viewed online at: <https://www.einpresswire.com/article/910787219>

EIN Presswire's priority is source transparency. We do not allow opaque clients, and our editors try to be careful about weeding out false and misleading content. As a user, if you see something we have missed, please do bring it to our attention. Your help is welcome. EIN Presswire, Everyone's Internet News Presswire™, tries to define some of the boundaries that are reasonable in today's world. Please see our Editorial Guidelines for more information.

© 1995-2026 Newsmatics Inc. All Right Reserved.