

# Royal Moving & Storage Reports Increased Relocation Activity Across San Jose and the South Bay

*Housing transitions, job mobility, and continued regional growth continue to influence moving activity throughout the South Bay area.*

SAN JOSE, CA, UNITED STATES, May 9, 2026 /EINPresswire.com/ -- Royal Moving & Storage reports continued relocation activity across San Jose and surrounding South Bay communities as residents and businesses adapt to ongoing housing, employment, and lifestyle changes throughout the region.

San Jose remains one of the most active housing and employment markets in Northern California. Movement between neighborhoods, apartment communities, and nearby cities such as Santa Clara, Sunnyvale, Cupertino, Milpitas, and Mountain View continues to contribute to steady relocation demand across the South Bay.

Industry professionals note that a combination of job mobility, lease transitions, and changing housing needs are among the primary drivers of relocation activity in the area. The South Bay's concentration of technology companies and expanding residential developments also continue to influence both residential and commercial moves.

Apartment relocations remain especially common in Downtown San Jose and mixed-use developments throughout the region. Many residential buildings require advance scheduling, elevator reservations, and designated move-in windows, which can affect how relocations are planned and coordinated.



Traffic conditions and travel time across the South Bay also continue to play an important role in moving logistics. While many relocations occur within the same metropolitan area, congestion during peak commuting hours can affect scheduling and overall move duration.

In addition to residential activity, office and workspace relocations continue across the region as businesses adjust to evolving workplace needs. Companies moving between office buildings, shared workspaces, and suburban business parks often require additional planning related to access, scheduling, and equipment handling.

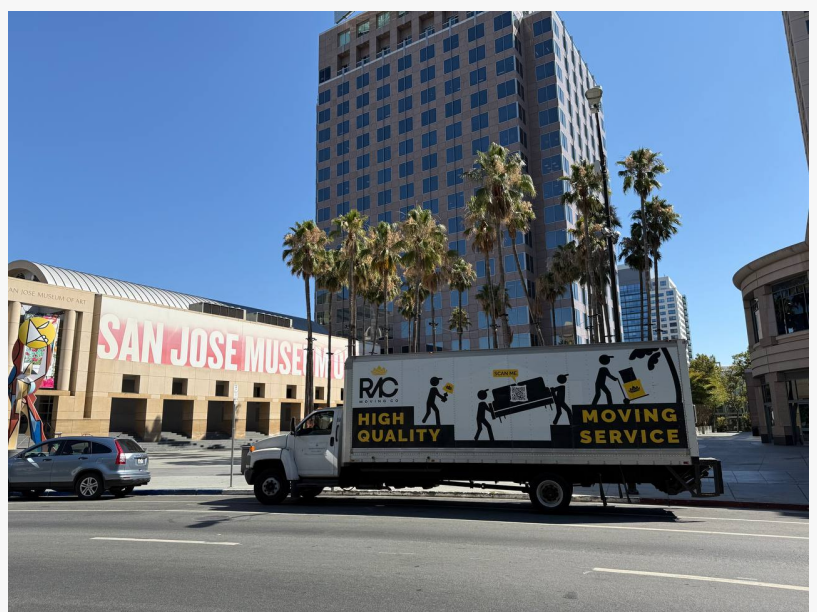
Property access conditions can also vary significantly depending on the neighborhood and building type. Gated communities, managed apartment complexes, and multi-story office buildings may require coordination with property management before a move can take place.

Industry professionals emphasize the importance of obtaining written estimates, confirming building requirements early, and planning around local traffic conditions before scheduling a relocation. Residents and businesses researching local relocation options often review available moving services in San Jose to better understand how access conditions and logistics may affect the moving process.

As housing and employment trends continue to evolve throughout the South Bay, relocation activity is expected to remain steady across both residential and commercial sectors.

### About Royal Moving & Storage

Royal Moving & Storage is a licensed and insured [moving company serving San Jose](#) and surrounding South Bay communities. The company provides residential and [commercial](#)



Royal Moving & Storage SF Team

[relocation services](#), including local and long-distance moving, professional packing, and storage solutions.

Vlad Iglin

Royal Moving & Storage San Jose

+1 415-715-1925

[email us here](#)

Visit us on social media:

[LinkedIn](#)

[Instagram](#)

[Facebook](#)

[YouTube](#)

---

This press release can be viewed online at: <https://www.einpresswire.com/article/911673561>

EIN Presswire's priority is source transparency. We do not allow opaque clients, and our editors try to be careful about weeding out false and misleading content. As a user, if you see something we have missed, please do bring it to our attention. Your help is welcome. EIN Presswire, Everyone's Internet News Presswire™, tries to define some of the boundaries that are reasonable in today's world. Please see our Editorial Guidelines for more information.

© 1995-2026 Newsmatics Inc. All Right Reserved.