

Customized Aesthetic Washi Tape Design: Transforming Creative Ideas Into Reality With Shiimmer

DONGGUAN, GUANGDONG, CHINA, June 1, 2026 /EINPresswire.com/ -- A quiet studio is bathed in the soft amber glow of a desk lamp, where a creator carefully peels a strip of translucent tape, its surface shimmering with delicate floral patterns and metallic accents. The rhythmic sound of scissors meeting paper and the gentle press of adhesive onto a journal page mark the beginning of a storytelling process. In this intimate space, stationery is not merely a tool but a medium for emotion. This rising demand for personalized expression has pushed the industry beyond mass-produced rolls toward the realm of [Customized Aesthetic Washi Tape Design](#).

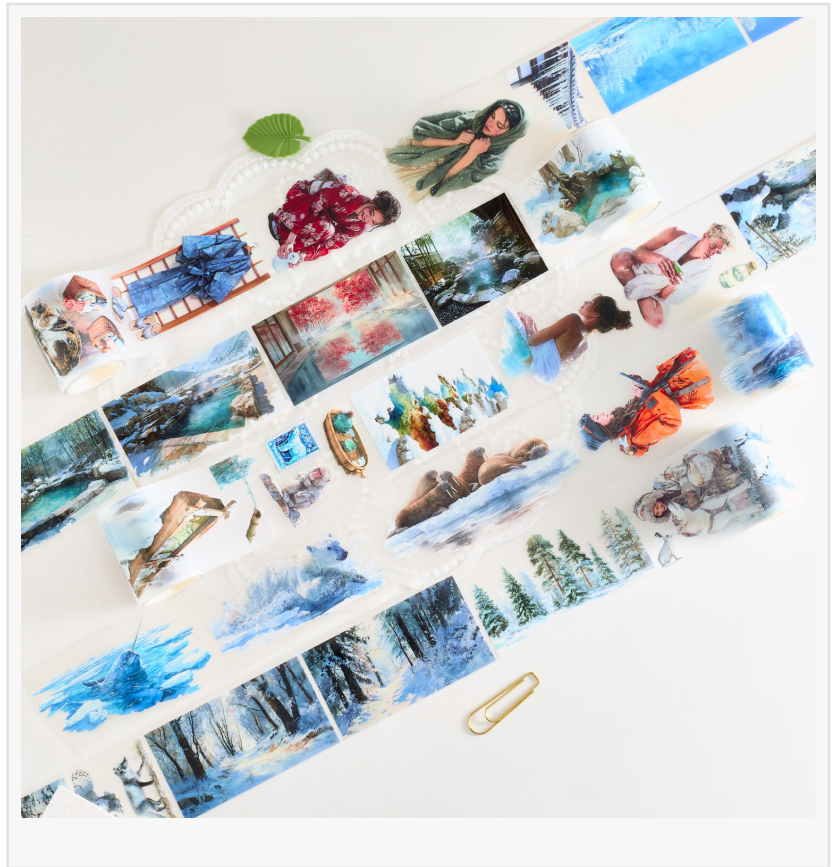


Today, aesthetic washi tape has evolved into a versatile artistic element, used extensively in bullet journaling, bespoke gift packaging, architectural modeling, and even brand identity development, allowing individuals to anchor their fleeting inspirations onto tangible surfaces.

Bridging the Gap Between Mass Production and Individual Expression

For years, stationery enthusiasts and small business owners operated within the constraints of "batch picking." Consumers would browse through endless catalogs of pre-made patterns, often settling for designs that were "close enough" but rarely a perfect reflection of their unique vision. As the community of journalers and crafters grew more sophisticated, a subtle shift occurred in the market. The desire for exclusivity began to outweigh the convenience of off-the-shelf products. Hobbyists wanted tapes that matched their specific color palettes, and independent illustrators sought ways to turn their digital sketches into professional-grade PET tapes.

This transition from picking to creating marked the entry of [Shimmer](#), a brand that recognized the gap between a creative spark and a physical product. Based in China, Shimmer serves as more than a retail destination; it functions as a creative bridge, offering a curated selection of finished collections while positioning customized aesthetic washi tape design as its core capability to help clients materialize their specific artistic visions.



The Technical Artistry of Modern Washi Tape Design

The journey of bringing a custom design to life involves a delicate balance of aesthetics and technical precision. When exploring specialized collections, such as the matte PET tapes featuring delicate undertint branches or intricate botanical illustrations, one realizes that the complexity of modern washi tape design requires a sophisticated production approach. The customization process at Shimmer is designed to be an accessible collaboration.

It begins with the client's concept—be it a hand-drawn illustration, a specific brand pattern, or a thematic color story. By utilizing high-quality PET materials and advanced printing techniques, the brand ensures that the final washi tape design maintains the clarity of the original artwork, whether it involves complex layering, white ink printing, or specific transparency levels. This service allows creators to move beyond the limitations of standard retail, offering a path to produce stationery that is truly one-of-a-kind.

Core Advantages: From Professional Design to Reliable Delivery

Shimmer's ability to support such high-level customization is rooted in its integrated operational strengths. Functioning as a comprehensive one-stop destination for new types of PET tape and stationery products, the company provides a seamless experience from conception to manufacturing.

□Expert Design Consultation

The core of their competitive edge lies in a professional designer team that understands the nuances of adhesive art. Unlike standard printing houses, these specialists consult on the technical feasibility of a washi tape layout, ensuring that repeating patterns align perfectly and that colors remain vibrant on various substrates.

□Advanced Manufacturing and PET Expertise

This expertise is paired with a mature PET tape production process that accommodates the physical properties of the material—durability, waterproof features, and the "peel and stick" convenience that modern crafters demand. Reliability and flexibility are the final pillars of this service. In an industry where lead times can often discourage independent creators, Shiimmer maintains a service model that prioritizes reliable delivery and adaptable production scales.

Diverse Applications for Customized Aesthetic Washi Tape Design

The prospect of a customized aesthetic washi tape design is feasible for various scenarios, ranging from personal milestones to commercial branding.

□Boutique Branding: A local café might seek a signature tape for sealing pastry boxes to enhance their brand's tactile appeal.

□Event Personalization: A bride might design a specific floral washi tape to unify her wedding invitations and favors.

□Influencer Collaborations: An online influencer might create a limited-edition tape series as a tangible connection to their digital community.

By keeping unique stationery accessible to everyone across the world, Shiimmer continues to foster a global community of sharing and inspiration. Whether you are an individual looking to preserve a memory or a brand aiming to leave a lasting impression, the transition from a creative idea to a finished roll of tape is now a collaborative reality. For those ready to begin their own journey of creation, reaching out to explore the possibilities of personalized stationery is the first step in turning a vision into a shimmering reality.

To learn more about the collections and customization options, please visit:

<https://www.shiimmer.com/>.

Dongguan Shimei Cultural and Creative Design Co., Ltd.

Shiimmer

+86 157 3001 3510

lucy@shiimmer.com

Visit us on social media:

[Instagram](#)

[Facebook](#)

[YouTube](#)

[TikTok](#)

This press release can be viewed online at: <https://www.einpresswire.com/article/916506098>

EIN Presswire's priority is source transparency. We do not allow opaque clients, and our editors try to be careful about weeding out false and misleading content. As a user, if you see something we have missed, please do bring it to our attention. Your help is welcome. EIN Presswire, Everyone's Internet News Presswire™, tries to define some of the boundaries that are reasonable in today's world. Please see our Editorial Guidelines for more information.

© 1995-2026 Newsmatics Inc. All Right Reserved.