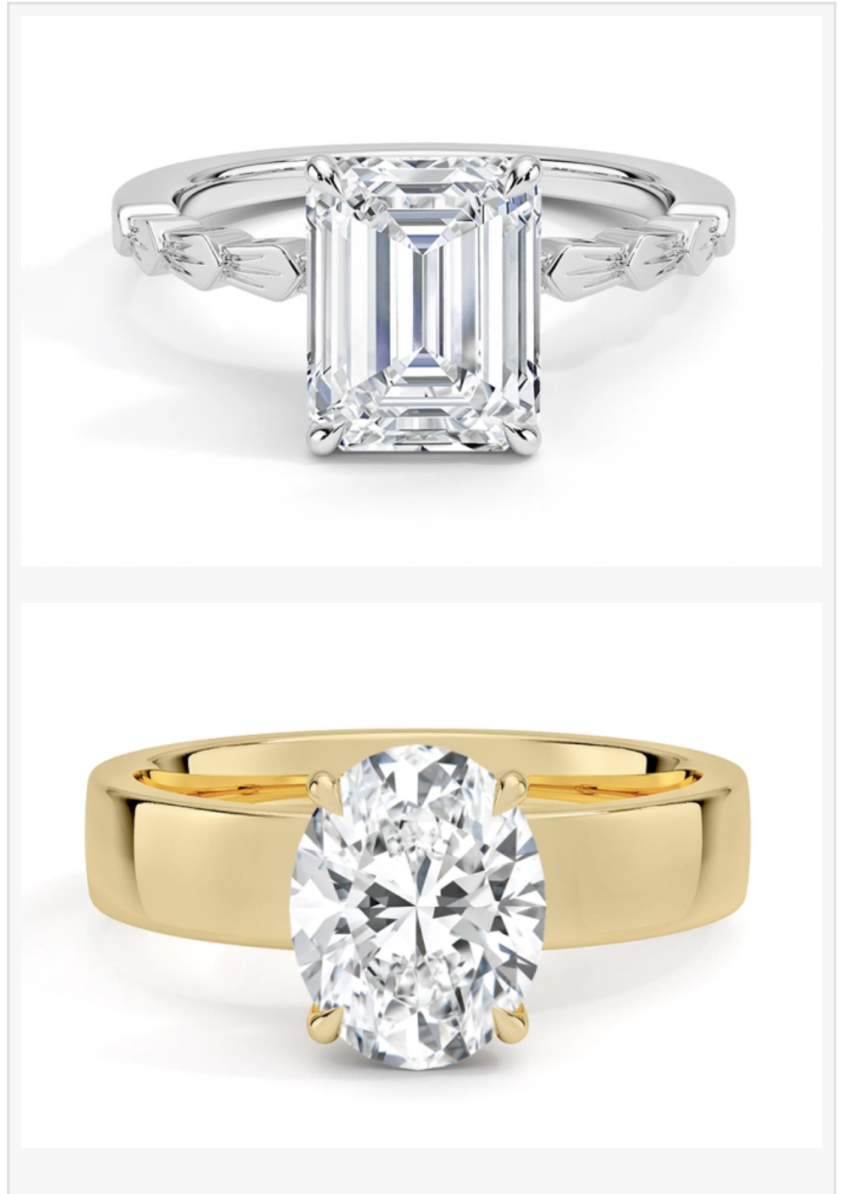


# How to Select a High Quality Lab Created Diamond Engagement Rings Supplier for Bulk Orders

WUZHOU, GUANGXI, CHINA, June 1, 2026 /EINPresswire.com/ -- Why does the consistency of a bulk jewelry shipment sometimes falter between the initial sample and the final delivery? How can a retail business ensure that hundreds of individual settings maintain the exact gold weight and stone clarity promised in a digital catalog? These are the practical challenges facing jewelry retailers and distributors as the market for sustainable luxury expands. In an era where compliant sourcing is no longer a niche preference but a baseline requirement, identifying a [High Quality Lab Created Diamond Engagement Rings Supplier](#) involves looking past aesthetic marketing and into the technical realities of manufacturing infrastructure.

Lab created diamond engagement rings have become the centerpiece of modern bridal collections, offering a combination of chemical identity to mined diamonds and a significantly reduced environmental footprint.

However, for a business placing large-scale orders, the priority shifts from a single beautiful ring to the reliability of a supply chain that can deliver thousands of carats with unwavering precision.



The primary risk in B2B jewelry procurement is the "hand-off" cost associated with trading companies that pose as factories. For bulk buyers, working directly with a source like [Wuzhou Floral Jewelry Co., Ltd.](#) is a strategic necessity to protect profit margins. A genuine manufacturer operates out of a dedicated facility—in this case, a 1,200-square-meter production hub equipped with 45 pieces of precision machinery.

When a china lab diamond engagement rings supplier manages the entire lifecycle of a product under one roof, from CAD design to final polishing, the buyer gains transparency. Monthly production capacities reaching 2,000 pieces of fine jewelry indicate a level of industrial maturity that a simple trading office cannot replicate. This infrastructure allows for robust ODM and OEM services, ensuring that the lab created diamond engagement rings arriving in a retail storefront are not marked up by multiple middleman layers.

### The Role of Independent Certification in Bulk Consistency

In the diamond trade, "quality" is a subjective term until it is validated by a third-party authority. A reliable supplier does not ask a buyer to trust their internal grading; they provide universal proof. The industry standard for bulk consistency relies heavily on IGI or GIA certifications. For high-volume buyers, the ability to access a deep inventory—such as a stock of over 20,000 IGI-certified loose diamonds—ensures that every stone in a bulk order of lab created diamond engagement rings meets specific 4C criteria.

This massive inventory is critical for maintaining color and clarity stability. When a retailer orders fifty rings, they need the diamonds to match perfectly in side-by-side displays. By utilizing a china lab diamond engagement rings supplier that supports online verification of certificate numbers, businesses can audit their shipment's quality in real-time, ensuring that every VS+ clarity stone is exactly as documented.

### Supply Chain Resilience and Specialized Design Portfolios

The success of a retail collection often depends on the diversity and structural integrity of the settings offered. Modern engagement rings have evolved beyond the simple solitaire; today's market demands intricate halo settings, vintage-inspired milgrain details, and contemporary hidden halo designs. A high quality lab created diamond engagement rings supplier must demonstrate versatility in its product portfolio, showcasing everything from classic six-prong round brilliant cuts to sophisticated oval and emerald-cut multi-stone arrangements.

Supply chain resilience is often a product of geography and internal design capacity. Operating out of Wuzhou, a global hub for synthetic gemstones, provides a distinct logistical advantage. This local ecosystem allows for a massive stone buffer, which translates to faster turnaround times for the client. Standard custom production cycles of 10 to 12 days, complemented by the ability to handle urgent restock orders, prevent the "out of stock" scenarios that cost retailers significant revenue during engagement seasons. For a bulk buyer, the depth of a supplier's loose diamond inventory is the ultimate insurance policy against market volatility.

### Transparent Pricing and Technical Craftsmanship

Profitability in the bridal sector is found in the details of material integrity. A common pitfall in bulk sourcing is the use of plating to mask lower-quality alloys. A professional approach involves

the exclusive use of solid gold—specifically 9K, 10K, 14K, and 18K—ensuring that each piece of lab created diamond engagement rings maintains its value and durability over decades.

Technical precision in gold weight control is equally vital. The manufacturing process utilizes advanced casting and hand-setting techniques to ensure that even delicate pavé bands are structurally sound. Professional manufacturers provide detailed quotes based on actual gold usage rather than estimates. Furthermore, the barrier to entry for new collections is often lowered by flexible policies, such as small-batch trial orders without mold fees. This allows retailers to test specific lab created diamond engagement rings designs in their local market before committing to massive inventory volumes, balancing the risk of innovation with the rewards of scale.

### Protecting Brand Identity Through Custom Engineering

In a crowded market, generic designs lead to price wars. B2B clients require exclusivity to differentiate their brand. The transition from a concept to a physical product should be seamless. Modern "5 Clicks to Custom" workflows, which integrate CAD design and 3D printing for rapid prototyping, allow a china lab diamond engagement rings supplier to act as an extension of a client's own design team. This technical synergy ensures that the specific curvature of a cathedral setting or the precision of a tulip-style basket is replicated perfectly across an entire production run.

Beyond the aesthetics, brand protection involves design exclusivity. By supporting private mold development, a high quality lab created diamond engagement rings supplier ensures that a retailer's signature style isn't replicated by competitors. This focus on technical storytelling—where every hidden inscription or unique setting curve is executed with CNC-level accuracy—allows businesses to transform emotional narratives into high-value, timeless assets for their end consumers.

For more information on high-quality manufacturing and bulk supply solutions, visit <https://www.floralgemjewelry.com>.

Wuzhou Floral Jewelry Co., Ltd.  
Wuzhou Floral Jewelry Co., Ltd.  
+86 191 2737 4315  
sales01@floralgemjewelry.com

Visit us on social media:

[LinkedIn](#)

[Instagram](#)

[Facebook](#)

[YouTube](#)

[TikTok](#)

[X](#)

[Other](#)

---

This press release can be viewed online at: <https://www.einpresswire.com/article/916510933>

EIN Presswire's priority is source transparency. We do not allow opaque clients, and our editors try to be careful about weeding out false and misleading content. As a user, if you see something we have missed, please do bring it to our attention. Your help is welcome. EIN Presswire, Everyone's Internet News Presswire™, tries to define some of the boundaries that are reasonable in today's world. Please see our Editorial Guidelines for more information.

© 1995-2026 Newsmatics Inc. All Right Reserved.