

YTC Healthcare expands scalable staffing solutions to address Canada & US workforce shortages

YTC Healthcare expands rapid-response staffing solutions for hospitals, long-term care, clinics, and home care providers across Canada and the U.S.

MISSISSAUGA, ONTARIO, CANADA, June 2, 2026 /EINPresswire.com/ -- [YTC Healthcare](https://www.ytchealthcare.com), a licensed medical staffing agency operating under Ontario Permit THA-0000002579 and Quebec Permit YTC-AP-2202698, with additional operations in Philadelphia, Pennsylvania, is announcing expanded staffing programs designed to address ongoing and acute workforce shortages across Canadian and U.S. healthcare systems. The company provides staffing solutions for hospitals, long-term care facilities, clinics, dental offices, and home care providers facing critical staffing gaps and rising operational pressure.



YTC Healthcare provides licensed healthcare staffing and medical billing services across Canada and the United States, supporting hospitals, clinics, and healthcare organizations with workforce and revenue cycle solutions.

“

Speed, accuracy, and credential verification define modern healthcare staffing. We deliver all three without compromise.”

Salman Rehan, CEO

YTC Healthcare places Registered Nurses, Registered Practical Nurses, Physicians, Personal Support Workers, Developmental Support Workers, Social Service Workers, and Child Care Workers on both temporary and permanent assignments. The organization has developed a rapid-response deployment model capable of fulfilling urgent staffing requests within 24 to 48 hours for facilities experiencing immediate coverage crises.

The Staffing Crisis Facing Healthcare Facilities

Healthcare administrators across Ontario, Quebec, and broader North American regions

continue to operate in a sustained staffing shortage environment that has persisted since 2020. Hospitals, long-term care homes, and clinics are managing increased patient demand while simultaneously facing workforce burnout, turnover, and recruitment delays.

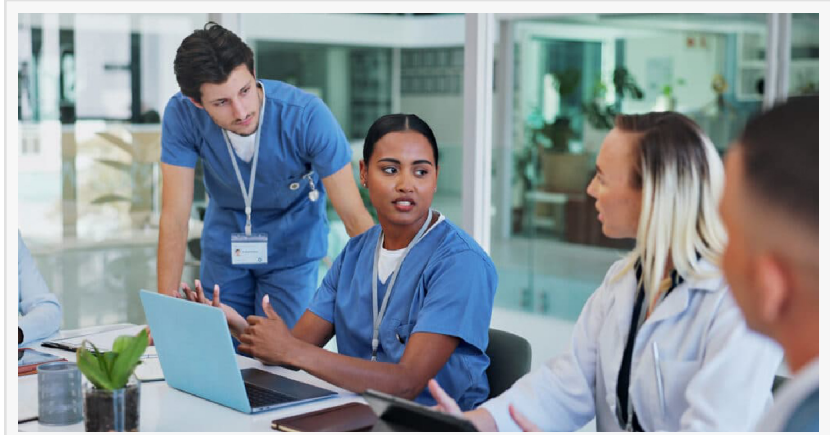
A major challenge is inconsistency in staffing agency performance. Facilities report cases where agency workers arrive without verified experience matching job requirements, or where staff leave mid-assignment due to overlapping placements across multiple facilities. These disruptions directly impact patient care, operational continuity, and workforce stability.

Long-term care providers face particularly complex challenges. Residents with Alzheimer's disease, dementia, acquired brain injuries, or ALS require specialized care staff trained in behavioral management, mobility assistance, and clinical care protocols. Generic staffing solutions that assign unqualified or mismatched workers to sensitive care environments can compromise safety and quality of care.

Home care operators face a different but equally critical issue. Clients requiring [24-hour in-home care](#) depend on consistent caregiver assignment teams. When a Personal Support Worker fails to report for duty and replacement coverage is delayed, responsibility often falls on family members or untrained caregivers, creating significant safety risks for vulnerable individuals.

How YTC Healthcare Is Built to Respond

YTC Healthcare addresses these challenges through a structured, compliance-driven staffing model that prioritizes credential verification, workforce readiness, and rapid deployment capability.



YTC Healthcare operates under licensed staffing permits in Ontario and Quebec and maintains compliance with healthcare staffing regulations across Canada and the United States.



YTC Healthcare delivers rapid-response staffing solutions for hospitals, long-term care facilities, clinics, and home care providers across Canada and the United States.

All healthcare professionals are verified prior to placement. Registered Nurses must hold active registration with the College of Nurses of Ontario or equivalent provincial regulatory bodies. Physicians are validated through their respective Colleges of Physicians and Surgeons. Personal Support Workers and allied health professionals are screened against recognized training and certification standards.

This credentialing process is managed internally by YTC Healthcare's verification team rather than outsourced to third-party providers, ensuring consistency, accountability, and accuracy in workforce qualification checks.

For hospital staffing needs, YTC Healthcare maintains a pre-screened talent pool of healthcare professionals across multiple specialties. This allows the company to respond rapidly to urgent staffing shortages such as last-minute ICU coverage gaps, emergency medical-surgical unit shortages, or multiple simultaneous sick calls. Qualified candidates can be presented within 24 to 48 hours, significantly reducing recruitment delays that traditionally take weeks.

For long-term care facilities, YTC Healthcare applies a matching system based on resident care profiles. Facilities specializing in dementia care, for example, are staffed with Personal Support Workers and Developmental Support Workers who have demonstrated experience in memory care environments and behavioral support. This ensures alignment between worker experience and resident needs.

For home care services, YTC Healthcare emphasizes continuity-based staffing models. Instead of rotating caregivers, the company prioritizes stable assignment teams so that clients receive consistent care from familiar workers. This approach improves trust, communication, and care reliability for individuals receiving in-home support.

Specialized Care Staffing Programs

YTC Healthcare operates dedicated staffing programs for complex care environments, including Alzheimer's care, dementia care, acquired brain injury support, and ALS patient care.

Workers assigned to these programs undergo additional screening for behavioral support experience, clinical familiarity, and competency in specialized equipment usage such as mobility aids, feeding systems, and assistive communication devices.

For example, ALS patients in advanced stages of care require workers trained in tube feeding support, respiratory assistance awareness, and coordination with clinical care teams. YTC Healthcare prioritizes matching such clients with caregivers who have relevant direct experience rather than generalist support workers.

Leadership Commentary

“Every facility we work with is short-staffed in a way that affects real patient outcomes,” said Salman Rehan, CEO of YTC Healthcare. “When a long-term care home calls us at 6 PM because they have two empty shifts starting at 11 PM, they need someone qualified, verified, and ready—not a list of candidates for next week. Our system is built specifically to say yes to that call.”

He added that speed, accuracy, and reliability are central to healthcare staffing outcomes. “The healthcare system cannot afford delays in staffing. Our responsibility is to ensure that every placement we make is clinically appropriate and immediately deployable.”

Licensing and Compliance

YTC Healthcare operates under fully licensed staffing agency frameworks in Ontario and Quebec, ensuring compliance with provincial employment standards, fee restriction laws, and healthcare staffing regulations. The company’s Philadelphia operations comply with applicable Pennsylvania staffing regulations.

Licensing compliance is a critical component of healthcare staffing operations, as it ensures protection for both healthcare facilities and workers. Facilities using licensed agencies benefit from documented regulatory compliance, reducing legal and operational risk.

“Our clients carry significant regulatory responsibility for every staff member working in their facilities,” Rehan said. “When they work with YTC Healthcare, they are working with a licensed and insured agency that screens to a clinical standard. We are not a job board—we are a staffing partner accountable for every placement we make.”

About YTC Healthcare

YTC Healthcare is a licensed [medical billing services](#) headquartered in Mississauga, Ontario, with operations in Philadelphia, Pennsylvania. The company provides temporary and permanent staffing solutions for hospitals, clinics, long-term care facilities, dental offices, child care centers, and private home care clients across Canada and the United States.

The organization places Registered Nurses, Physicians, Personal Support Workers, Developmental Support Workers, Social Service Workers, and Child Care Workers, supporting healthcare providers in maintaining safe, consistent, and compliant staffing coverage.

Salman Rehan
YTC Healthcare
+1 (365) 737-4000
info@ytchealthcare.com
Visit us on social media:
[LinkedIn](#)

This press release can be viewed online at: <https://www.einpresswire.com/article/916876605>

EIN Presswire's priority is source transparency. We do not allow opaque clients, and our editors try to be careful about weeding out false and misleading content. As a user, if you see something we have missed, please do bring it to our attention. Your help is welcome. EIN Presswire, Everyone's Internet News Presswire™, tries to define some of the boundaries that are reasonable in today's world. Please see our Editorial Guidelines for more information.

© 1995-2026 Newsmatics Inc. All Right Reserved.