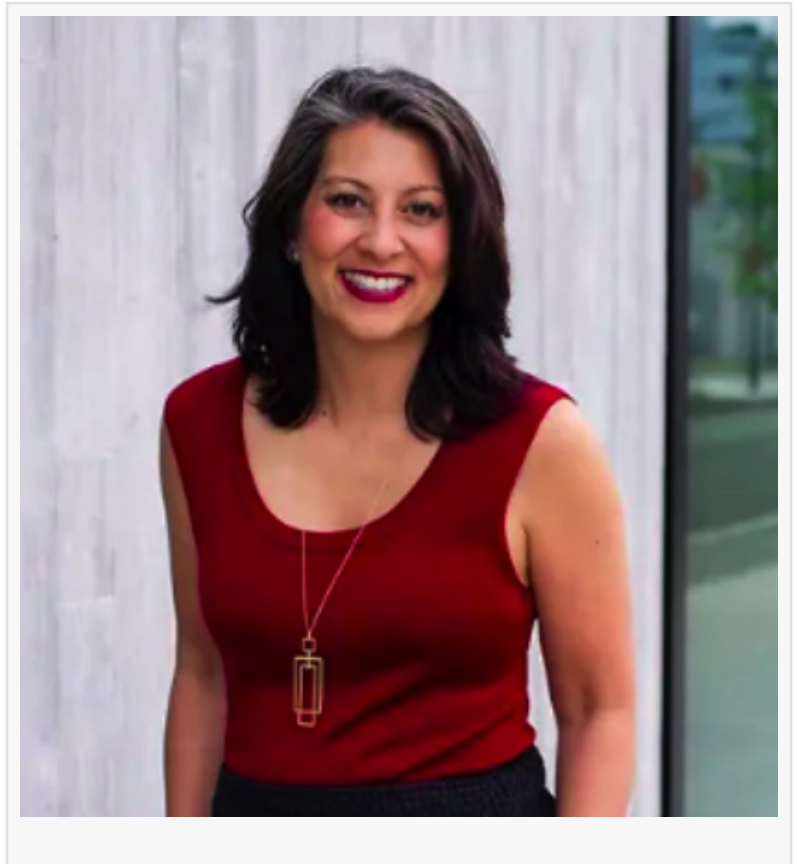


Influential Women Showcases Alison Dawn Lee: Executive Coach Guiding Women Leaders Through Transformational Leadership

SEATTLE, WA, UNITED STATES, June 17, 2026 /EINPresswire.com/ -- Integrating Somatic Intelligence, Psychology, and Inner Work to Support Executives in Leading with Presence, Authenticity, and Alignment

Alison Dawn Lee is a seasoned executive coach and guide for female leaders navigating transformative thresholds in their personal and professional lives. Based in Seattle, Washington, she specializes in supporting senior leaders—including CEOs, VPs, founders, and board members—in connecting with their authentic selves, strengthening inner trust, and leading from presence rather than performance. With more than 25 years of experience in leadership development, organizational consulting, and personal growth work, Alison brings a rare depth of lived transformation combined with extensive professional expertise in senior leadership environments.



Her coaching philosophy moves beyond traditional leadership development models that focus primarily on strategy, structure, and organizational culture. Instead, Alison integrates somatic intelligence, consciousness development, and psychological insight to help leaders access deeper internal awareness. Through her approach, clients explore emotional triggers, body-based intelligence, and identity-level patterns that shape leadership behavior. These insights are then translated into practical application—impacting decision-making, team dynamics, communication, and organizational outcomes.

Alison's work supports leaders through significant transitions, including career shifts, organizational restructuring, and personal reinvention. She guides clients in dismantling

outdated identities that no longer serve them and in cultivating leadership grounded in authenticity, clarity, and emotional presence. Her approach reflects a blend of psychology, leadership theory, and transpersonal perspectives, offering executives a multidimensional framework for transformation.

Her journey into this work began early in life as she navigated personal development while raising a family as a young mother and stepmother. During this time, she pursued certifications in step-parenting, mediation, conflict resolution, and peer counseling, building a strong foundation in human behavior and relational dynamics. She later earned her MBA with a specialization in leadership and went on to work in learning and development within a global software organization, where she coached leaders and supported enterprise-wide organizational growth.

Over the course of her career, Alison has guided hundreds of leaders across North America, helping them develop greater self-awareness, emotional intelligence, and presence. Her methods integrate mindfulness, intuition, and embodied awareness, enabling clients to move beyond habitual leadership patterns and access deeper levels of clarity and effectiveness.

Alison attributes her success to her ongoing commitment to inner work. She believes her ability to support clients at a profound level is directly connected to the depth of personal exploration she continues to undertake. Many of the leaders she works with have already engaged in extensive leadership training, coaching, and therapy; however, Alison's focus lies in addressing the underlying structural patterns formed long before professional roles that continue to influence leadership behavior.

She also credits a close circle of trusted friends who support her authenticity and consistently reflect her strengths to her. In addition, she acknowledges the importance of both formal mentors and life experiences—including challenging relationships—as essential contributors to her growth, resilience, and expanded awareness.

The best career advice Alison has ever received is: "Be yourself, everyone else is taken." This principle has shaped her understanding of identity, purpose, and leadership. She emphasizes that discovering one's unique gifts, life experiences, and passions is key to understanding one's authentic self. Over time, she has learned to reinterpret her inner critic voice as a protective mechanism rather than a source of truth, allowing her to move more fully into alignment with her purpose. Today, she is deeply committed to helping others undertake the same journey of self-discovery and integration.

Alison encourages young women entering the coaching and leadership development field to prioritize their own inner work. She believes that effective leadership support requires practitioners to have examined and processed their own emotional and psychological experiences. Without this foundation, she notes, it becomes difficult to hold space for clients navigating similar challenges. Through personal development, coaches cultivate clarity, empathy,

and presence—qualities she views as essential for meaningful transformation work.

She also identifies a significant opportunity in the evolution of her field: a shift toward deeper identity-based coaching. Alison observes that many professionals operate from long-established roles such as achiever, pleaser, mediator, or advice-giver. While functional, these identities can limit presence and authenticity. She believes the next phase of leadership development requires individuals to move beyond these roles and engage with a more conscious, integrated sense of self. Referencing Einstein's principle that problems cannot be solved with the same thinking that created them, she emphasizes the need for expanded awareness in leadership and coaching alike.

For Alison, core values are central to both her life and practice. She places strong emphasis on self-awareness and self-compassion, believing that compassion for others must begin internally. Curiosity is also foundational to her work, allowing her to approach both clients and herself with openness and a beginner's mind. Courage is another guiding value, particularly in supporting women leaders as they step into authenticity and visibility. Integrity remains essential, ensuring alignment between internal transformation and external expression.

Through her coaching, speaking, and thought leadership, Alison Dawn Lee continues to redefine executive development by integrating emotional depth, identity awareness, and conscious leadership practices. Her work supports leaders in moving beyond performance-driven success toward leadership rooted in authenticity, presence, and meaningful impact.

Learn More about Alison Dawn Lee:

Through her Influential Women profile, <https://influentialwomen.com/connect/alisondawn-lee>, through her website, <https://www.alisondawnlee.com/>, or her podcast, Alison Dawn Lee – Out Beyond Ideas, found on Spotify and Apple Podcasts.

Influential Women

Influential Women provides a platform where women from all backgrounds can connect, share their perspectives, and create content that empowers themselves and others. Through storytelling, thought leadership, and creative expression, Influential Women amplifies voices that inspire change.

Editorial Team

Influential Women

[email us here](#)

This press release can be viewed online at: <https://www.einpresswire.com/article/920192201>

EIN Presswire's priority is source transparency. We do not allow opaque clients, and our editors try to be careful about weeding out false and misleading content. As a user, if you see something

we have missed, please do bring it to our attention. Your help is welcome. EIN Presswire, Everyone's Internet News Presswire™, tries to define some of the boundaries that are reasonable in today's world. Please see our Editorial Guidelines for more information.

© 1995-2026 Newsmatics Inc. All Right Reserved.