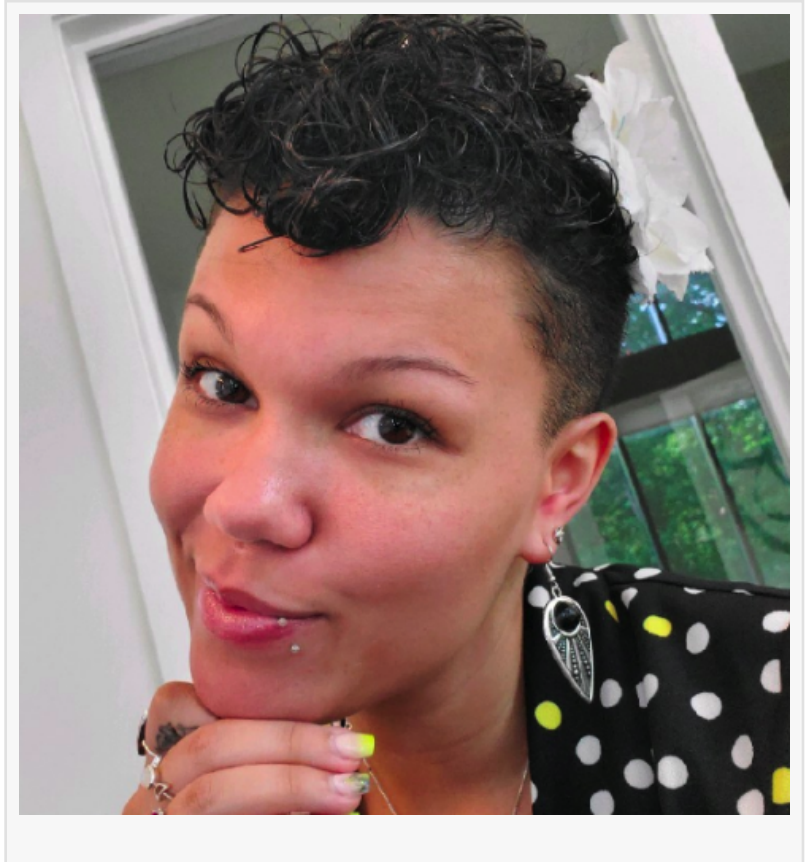


Influential Women Highlights Heather Raymond, CAM: Community Manager at Bell Annapolis on West

ANNAPOLIS, MD, UNITED STATES, June 19, 2026 /EINPresswire.com/ -- Accomplished Multifamily Housing Professional and Internal Trainer Known for Building Strong Teams, Elevating Resident Experience, and Leading with Trust, Empathy, and Operational Excellence

Heather Raymond, CAM, is an accomplished Community Manager with nearly eight years of experience in property management, currently leading operations at Bell Annapolis on West, a 300-unit multifamily residential community in Annapolis, Maryland. In her role, she oversees all aspects of daily property operations, including resident relations, lease administration, maintenance coordination and follow-up, and on-site retail management. In addition to her operational responsibilities, Heather serves as an internal trainer, mentoring newly appointed Community Managers and helping develop team members across Bell Partners to ensure consistency in leadership, service delivery, and operational excellence.



Throughout her tenure, Heather has become known for her hands-on leadership style and commitment to cultivating strong, service-oriented teams. Her work extends beyond property management operations, as she plays an active role in shaping company culture and supporting professional development through Bell Partners' internal training initiatives, including the Bell Buddy program. Her ability to guide and support emerging leaders reflects her dedication to strengthening the multifamily housing industry from within.

Before entering property management in 2018, Heather built a diverse professional background

spanning customer service, retail operations, and salon management. Her transition into property management began when she was invited to join her first community as an Assistant Manager. It was in this role that she discovered a passion for resident engagement, operational leadership, and team development—ultimately setting the foundation for her career in multifamily housing.

Heather holds a Bachelor of Fine Arts in Dance and Choreography from Virginia Commonwealth University and earned her Certified Apartment Manager (CAM) designation through the National Apartment Association. Since joining Bell Partners, she has steadily advanced through multiple leadership roles, managing various properties and contributing to internal training programs designed to develop future Community Managers.

Heather attributes her professional success to a strong work ethic instilled by her father, whom she credits for demonstrating discipline, leadership, and the ability to effectively manage teams through his own corporate career. She also credits her mother, describing her as direct, caring, and grounded in the belief of treating others with respect and leaving people better than they were found. These early influences continue to shape Heather's leadership philosophy today.

In her professional development, Heather also acknowledges the importance of Bell Partners' organizational culture. She notes that the company has provided a supportive environment that encourages learning, accountability, and growth. This culture has allowed her to take on new challenges confidently, learn from mistakes, and continuously evolve as a leader in the industry.

One of the most impactful pieces of career advice Heather has received is the principle of "fail forward." She emphasizes that as professionals advance in their careers, challenges become more complex, and the ability to navigate mistakes becomes essential. Rather than dwelling on setbacks, she believes individuals should focus on learning from them and continuing to move forward. For Heather, growth is rooted in resilience, reflection, and the willingness to keep progressing despite obstacles.

Heather encourages young women entering property management and related industries to remain authentic and confident in who they are. She emphasizes that success is not defined by conformity but by individuality and integrity. Heather notes that she personally presents herself in a way that stands out, including tattoos, piercings, and a blue mohawk, and while she acknowledges that she has sometimes had to work harder to prove her professional capabilities, she remains steadfast in her identity. She believes that authenticity builds trust and helps align individuals with organizations that value who they truly are.

One of the most significant challenges Heather identifies in property management is ensuring that residents feel consistently seen and heard. In a fast-paced environment where similar issues may arise repeatedly, she stresses the importance of approaching each situation with a fresh perspective and renewed attention. Her approach centers on emotional consistency—treating every interaction as an opportunity to reset, listen, and respond with care.

Her guiding philosophy is simple: leave people better than she found them. Whether resolving concerns immediately or working toward a longer-term solution, Heather's priority is ensuring that residents feel acknowledged, supported, and confident that their issues will be addressed.

Trust is the cornerstone of Heather's professional values. She believes that trust reflects integrity, reliability, and accountability, and is essential for building both strong teams and lasting professional relationships. Alongside trust, she emphasizes the importance of hard work and empathy. She describes herself as "old school" in her belief that consistent effort leads to recognition and growth over time.

Empathy, she notes, is particularly critical in her field. Recognizing that everyone may be facing unseen challenges, Heather believes even small moments of understanding can significantly impact someone's experience. These values—trust, hard work, and empathy—form the foundation of her leadership approach and influence how she engages with both residents and team members.

Through her role at Bell Annapolis on West, Heather Raymond continues to demonstrate a commitment to operational excellence, team development, and resident satisfaction. Her leadership reflects a balance of professionalism, authenticity, and compassion, positioning her as a respected leader within the multifamily housing industry and a dedicated mentor to the next generation of property management professionals.

Learn More about Heather Raymond:

Through her Influential Women profile: <https://influentialwomen.com/connect/Heather-Raymond>

Influential Women

Influential Women provides a platform where women from all backgrounds can connect, share their perspectives, and create content that empowers themselves and others. Through storytelling, thought leadership, and creative expression, Influential Women amplifies voices that inspire change.

Editorial Team
Influential Women
[email us here](#)

This press release can be viewed online at: <https://www.einpresswire.com/article/920739697>

EIN Presswire's priority is source transparency. We do not allow opaque clients, and our editors try to be careful about weeding out false and misleading content. As a user, if you see something we have missed, please do bring it to our attention. Your help is welcome. EIN Presswire,

Everyone's Internet News Presswire™, tries to define some of the boundaries that are reasonable in today's world. Please see our Editorial Guidelines for more information.

© 1995-2026 Newsmatics Inc. All Right Reserved.