

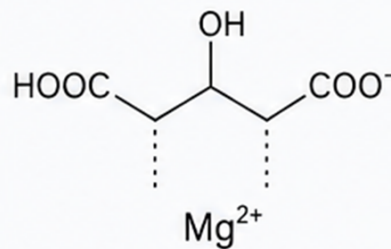
# OEM Available Magnesium Malate Powder Factory: Medchem Customized Manufacturing at SupplySide

CITY OF INDUSTRY, CA, UNITED STATES, June 29, 2026 /EINPresswire.com/ -- As consumer awareness surrounding metabolic health and cellular energy production continues to mature, how do premium dietary supplement brands differentiate their formulations in a crowded marketplace? Delivering high-bioavailability mineral products increasingly requires more than sourcing off-the-shelf ingredients. For brand owners and product developers attending SupplySide West, the focus has shifted toward finding manufacturing partners capable of precise technical customization. The annual exhibition serves as a critical forum where functional beverage and dietary supplement innovators actively seek reliable manufacturing infrastructure to bring complex, stable formulations to reality. Within this specialized space, [Medchem](#) introduces its versatile capabilities as a premier [OEM Available Magnesium Malate Powder Factory](#), offering tailored ingredient solutions designed to meet the rigorous demands of modern health and wellness portfolios.

The core value of a professional Magnesium Malate Powder Factory



## 5 Magnesium Malate Powder



extends far beyond basic contract packaging. True manufacturing adaptability implies an integrated approach to ingredient optimization, covering the adjustment of elemental concentration, compound stability, and grain morphology to fit specific application formats. Whether a brand aims to develop an advanced muscle recovery powdered beverage or a high-density encapsulated daily supplement, the raw material must exhibit optimal compatibility with the production machinery. Essence Medchem Co., Ltd. addresses these specific formulation challenges by engineering magnesium malate with a high purity profile of 98% or greater. This ensures that the final product maintains a clean chemical composition, minimizing the risk of unwanted interaction with other active botanicals or vitamins in a multi-ingredient blend.

### Technical Dimensions of Ingredient Customization

Transforming a standard mineral compound into a brand-specific ingredient solution requires deep technical control over physical and chemical parameters. Medchem utilizes advanced processing systems to adjust the particle size distribution of its magnesium malate powder, balancing the requirements of different delivery formats. For instance, direct-compression tableting lines demand excellent powder flowability and specific bulk density to achieve consistent die-filling and prevent capping. Conversely, instant functional beverage mixes require fine, dispersible granules that dissolve cleanly without chalky sedimentation. By calibrating these physical attributes during the synthesis and milling phases, the manufacturing team ensures smooth integration into high-speed commercial encapsulation and packaging lines.

In addition to physical optimization, maintaining exact control over the elemental magnesium content is crucial for regulatory compliance and accurate nutritional labeling. Essence Medchem Co., Ltd. monitors the chelation consistency of magnesium malate to guarantee that every batch provides predictable levels of both elemental magnesium and malic acid. This precise balance supports brands in making reliable functional claims regarding muscle function, structural support, and cellular metabolism. To streamline the international logistics pipeline, Medchem couples its customizable manufacturing infrastructure with flexible packaging options tailored for industrial-scale handling. Supported by dedicated U.S.-based warehousing, the company provides efficient regional distribution, significantly reducing lead times for North American brands and stabilizing the raw material supply chain against global shipping bottlenecks.

### Quality Infrastructure and Global Compliance Framework

Behind every successful custom ingredient launch lies a strict commitment to systematic manufacturing standards. Medchem operates production facilities governed by comprehensive quality management protocols, ensuring batch-to-batch consistency and complete raw material traceability. This manufacturing environment is backed by international certifications including ISO 9001, ISO 22000, and FSSC 22000, which confirm that all processing stages adhere to validated food safety and quality management criteria. For brands targeting diverse consumer segments, the ingredient inventory complies with Halal and Kosher requirements, alongside verified FDA registration, removing regulatory friction during domestic and international product registration.

□ ISO 9001 & ISO 22000: Validated quality management and food safety systems across the entire

synthesis workflow.

☐FSSC 22000 & FDA Registration: Compliance with global food safety initiatives and strict manufacturing inspection standards.

☐Halal & Kosher Certified: Enhances market accessibility for diverse and inclusive consumer demographics.

☐Comprehensive Documentation: Full technical data packages including Certificate of Analysis (COA), allergen statements, and stability data.

For product development teams, the path from initial formulation to commercial rollout requires comprehensive technical documentation. Essence Medchem Co., Ltd. provides complete transparency by supplying detailed technical dossiers, analytical methodologies, and third-party validation reports for its magnesium malate powder. These documents verify the absence of heavy metals, microbial contaminants, and unauthorized chemical residues, allowing quality assurance teams to fast-track internal qualification procedures. By providing clear, verifiable data alongside the physical raw material, the company assists brands in fulfilling strict compliance audits and maintaining consumer trust in an increasingly transparent market environment.

#### SupplySide West Engagement and Partnership Development

The upcoming SupplySide West exhibition provides an ideal venue for brand managers and research and development specialists to move beyond digital inquiries and engage in technical consultations. At the event, the technical team from Medchem will be available to address specific formulation challenges, discuss grain optimization parameters, and present specialized stability data. Visitors can review physical ingredient samples, evaluate the dissolution profiles of different powder grades, and coordinate custom manufacturing timelines tailored to upcoming product launch schedules.

Collaborating with an established manufacturing specialist allows dietary supplement brands to mitigate the operational risks associated with raw material variability. With more than twenty years of industry experience, Essence Medchem Co., Ltd. combines advanced chemical synthesis with flexible customer service to support the production of highly bioavailable mineral supplements. From early-stage benchtop sampling to large-scale commercial manufacturing, the company serves as a dependable partner for businesses looking to enhance their product lines with science-backed, precisely manufactured ingredients.

Discover the full range of customized material solutions and review comprehensive technical specifications by visiting the official corporate platform at <https://www.maxmedchem.com/>

Essence Medchem Co., Ltd.

Essence Medchem Co., Ltd.

+ 16263716327

[email us here](#)

Visit us on social media:

LinkedIn  
Facebook  
YouTube  
X

---

This press release can be viewed online at: <https://www.einpresswire.com/article/922938795>

EIN Presswire's priority is source transparency. We do not allow opaque clients, and our editors try to be careful about weeding out false and misleading content. As a user, if you see something we have missed, please do bring it to our attention. Your help is welcome. EIN Presswire, Everyone's Internet News Presswire™, tries to define some of the boundaries that are reasonable in today's world. Please see our Editorial Guidelines for more information.

© 1995-2026 Newsmatics Inc. All Right Reserved.