

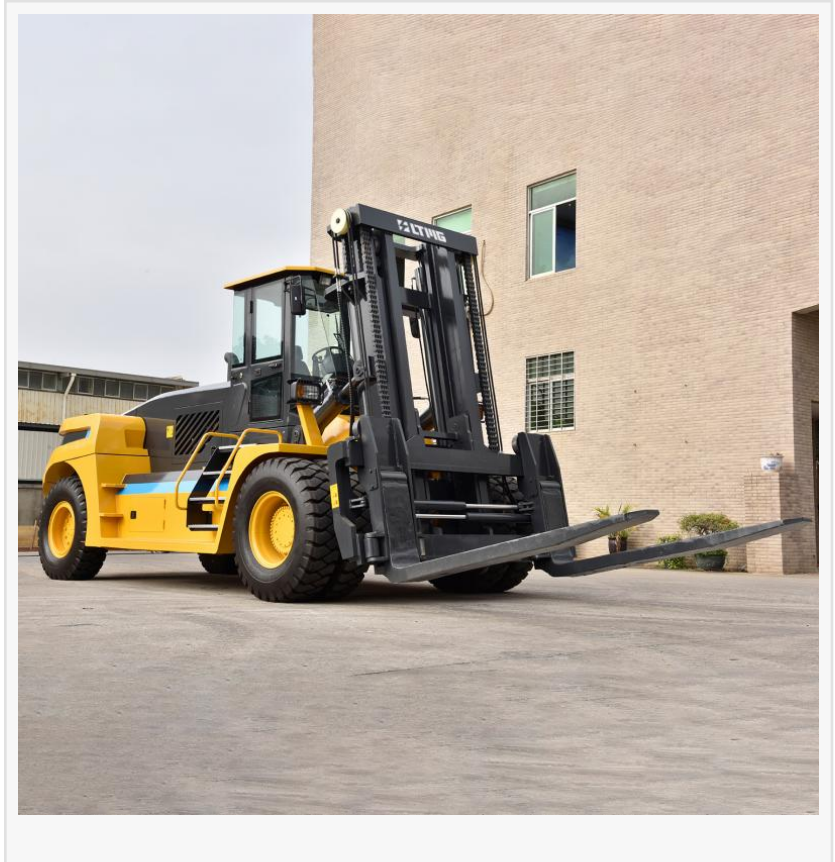
# How China's Leading Industrial Forklift Manufacturers Engineer for High-Load Reliability

XIAMEN, FUJIAN, CHINA, July 1, 2026

[/EINPresswire.com/](https://www.einpresswire.com/) -- At an active deep-water terminal, a massive container ship berths while heavy-duty vehicles whiz past it on narrow corridors of the yard. A high-capacity stacker pivots with the same precision as when lifting a standard pallet; such scenes highlight the necessity of sophisticated machinery in modern logistics where robust performance demands are continuously fulfilled.

[LTMG](#) Machinery Group Co. Ltd. (LTMG), one of China's Top 10 Industrial Forklift Manufacturers, has proven its capability by delivering reliable solutions across the world's most rigorous operating environments — from bustling ports in Latin America and heavy industrial zones in Europe

to demanding mining sites across Asia and Africa. Industrial forklifts designed for high-load applications must withstand salt spray at ports or mining dust while serving as the foundation of heavy manufacturing, timber yards, and large infrastructure projects.



## Engineering for Intensity: R&D Focused on Heavy-Duty Performance

At LTMG, research and development centered around applied engineering lies at the heart of the company's philosophy. Rather than chasing abstract technical parameters, the engineering team prioritizes stress analysis under extreme operating conditions. Standard forklift designs simply cannot withstand the punishment of sustained high-load duty cycles. LTMG's R&D therefore concentrates on heavy-duty industrial forklifts in the 25-40 ton class — diesel-powered machines purpose-built for round-the-clock operations in steel mills, timber yards, container empty-handling, and mining material transfer.

These models are equipped with high-output diesel engines, reinforced mast structures, heavy-

duty drive axles, and high-flow hydraulic systems, all of which have proven their resilience in the most demanding industrial environments. In such high-stakes sectors, the margin between success and failure often comes down to incremental refinements in structural durability — and it is precisely in these details that LTMG's engineering focus pays off.

### System Integration: Mastering Core Components

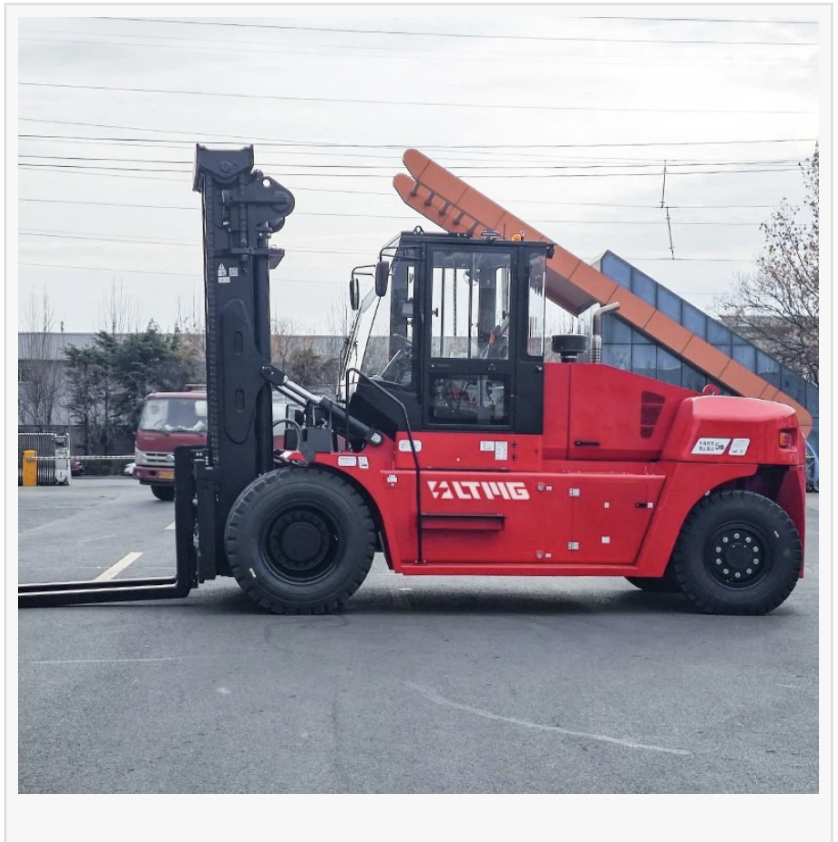
What sets LTMG products apart is their focus on maintaining control over critical systems. Engineers have designed reinforced masts using high-tensile alloy steel that resist torsional twisting during high-lift maneuvers - an essential factor in managing weights

that exceed 20 or 30 tons - so as to provide optimal control of an industrial forklift's power transmission system and structural frame. This combination ensures optimal weight handling. They come equipped with heavy-duty drive axles and high-torque transmission systems designed to facilitate low-speed, high-load transitions. Internal combustion heavy-duty forklifts use powerful engines and sophisticated hydraulic systems to maintain constant lifting speeds even at maximum capacity.

Intelligent control systems have become a core element of R&D output at the company. Integrating software technology with mechanical hardware, the group has implemented advanced algorithms for load sensing and anti-sway control. Under high loads, even minor mast oscillations can pose significant safety risks. LTMG proprietary software continuously monitors its center of gravity to provide active safety limits that help prevent tipping or structural overstress. Technical depth is further reinforced by an international supply chain service that ensures each component, from hydraulic valves to electronic sensors, meets stringent quality control standards set forth by international industrial certifications such as CE, ISO, and RoHS. Such attention to component engineering distinguishes leading industrial forklift manufacturers today.

### Product Variety and Specialized Features

This industrial forklift manufacturer boasts an expansive portfolio, featuring equipment designed specifically to fill niche industrial positions. From 1-ton electric units designed for indoor logistics to massive 45-ton diesel models deployed for port side operations, the product lineup demonstrates an expansive understanding of load dynamics. One standout feature across LTMG heavy load product lineup is an emphasis placed on operator ergonomics and



visibility. When operating heavy loads, vision is of paramount importance for an operator's safety. LTMG designs typically incorporate wide-view masts and overhead guards that ensure both visibility and safety during complex maneuvers - mitigating the risk of accidents during complex movements.

Additionally, industrial forklift models feature sophisticated cooling systems and multi-stage filtration units for added reliability in high heat environments such as steel mills or quarries. By employing heavy-duty radiators and high-efficiency air cleaners, the equipment maintains optimal operating temperatures to protect its engine and hydraulic components from premature wear. Environmental adaptability is of key importance in industrial forklift operations; environmental adaptability allows an industrial forklift to perform reliably no matter its environment - be it humid tropics or the dry heat of a desert mine. China's Top 10 Industrial Forklift Manufacturers have become known for this versatility.

### Validation through Real-World Application

At LTMG, the transition from design concept to reliable industrial forklift occurs via an ongoing feedback loop powered by field data. Instead of solely relying on laboratory simulations for R&D purposes, scenario-driven research informs new equipment designs. Data gathered from active mining sectors and container terminal projects informs next-generation equipment designs - feedback regarding tire wear patterns or leakages has led directly to adjustments of cooling systems or more durable materials - this practical approach allows industrial forklift manufacturers to address real world issues before they affect clients financially - providing real world solutions before they have an impactful effect.

At China's Top 10 Industrial Forklift Manufacturer, durability is prioritized through stringent testing protocols. Each new model before entering the market undergoes intensive accelerated life testing designed to simulate years of operation in mere months, providing benchmark reliability in construction machinery market.

By incorporating real-world field conditions such as dust, moisture, and repeated load cycles into testing, the final product is developed as a proven solution rather than an experimental one. This rigorous validation process reflects the group's strong commitment to durability, reliability, and long-term performance. To further support customer confidence, standard warranty coverage of 2,000 operating hours or 12 months is provided across the product range — a policy that has helped build the company's reputation among China's Top 10 industrial forklift manufacturers.

### Customization and Comprehensive Support

Heavy industrial industries often demand custom made solutions that meet specific application demands, so LTMG offers personalized one-stop ODM and OEM services tailored specifically to each application scenario. From changing fork length for timber handling purposes to integrating specific attachments for paper industry use, the engineering team works closely with clients to tailor each industrial forklift to its intended task - this flexibility makes LTMG more cost competitive globally by offering solutions precisely matched to user operational needs. Industrial forklift manufacturers like LTMG stand out by offering exceptional after-sales support, from technical assistance and spare part availability worldwide, through to robust service

networks that ensure their hardware can be found when needed. So even in remote mining locations or international logistics hubs, equipment can be maintained to the highest standards. The group's dedication to quality safety management and product quality control standards further establishes its position as an international enterprise offering Chinese construction machinery brands. By providing comprehensive service packages to global clientele, they ensure their "total cost of ownership" remains cost-efficient for global clients.

#### Reliability as a Core Value Proposition

A major indicator of an industrial forklift manufacturer's R&D strength lies in providing long-term value to their end user. At LTMG, research efforts are dedicated to serving every market segment with precision. Building upon proven universal design platforms, the group employs software technology integration, supply chain services, and intelligent manufacturing to deliver tailored engineering solutions adapted to each specific application scenario. This approach enables LTMG to create high-load solutions that combine technological superiority with practical resilience. The group's unwavering emphasis on stability, safety, and durability ensures that these machines perform without compromise, even under the most strenuous operating conditions.

LTMG takes an integrated approach to manufacturing equipment that is both technologically advanced and practically resilient, placing emphasis on engineering reliability for operational efficiency of global clients, supporting them with safe material handling operations that remain cost-effective and predictable. As construction and logistics industries demand higher capacities and smarter safety features, this benchmark enterprise's focus on rigorous R&D is always at the forefront - from initial design phase through global service support, every effort is taken to make each industrial forklift produced by this group a showcase of Chinese engineering excellence. For more information regarding industrial solutions with high load capacities and technical specifications, please visit LTMG at: <https://www.ltmg.com/>.

LTMG Machinery Group Co. Ltd.

LTMG Machinery Group Co. Ltd.

+86 173 5001 5962

[email us here](#)

Visit us on social media:

[LinkedIn](#)

[Instagram](#)

[Facebook](#)

[YouTube](#)

[TikTok](#)

---

This press release can be viewed online at: <https://www.einpresswire.com/article/923458417>

EIN Presswire's priority is source transparency. We do not allow opaque clients, and our editors try to be careful about weeding out false and misleading content. As a user, if you see something we have missed, please do bring it to our attention. Your help is welcome. EIN Presswire, Everyone's Internet News Presswire™, tries to define some of the boundaries that are reasonable

in today's world. Please see our Editorial Guidelines for more information.

© 1995-2026 Newsmatics Inc. All Right Reserved.