

LTMG Rough Terrain Forklift Solutions for Harsh Outdoor and Heavy-Duty Working Conditions

XIAMEN, FUJIAN, CHINA, July 1, 2026

[/EINPresswire.com/](#) -- How can a logistics manager ensure uptime when their standard warehouse forklift becomes stuck in the mud or fails to navigate an unpaved, steep incline? Construction, mining, and timber forestry industries often experience sharp efficiency losses at the transition point from paved loading dock to unimproved terrain.

[LTMG](#) Machinery Group Co. Ltd. has designed dedicated [Rough Terrain Forklift Solutions](#) specifically tailored for harsh outdoor and heavy-duty working environments to address these logistical bottlenecks. These solutions go far beyond simple adaptations of indoor equipment; they are constructed as construction-grade machinery capable of meeting diverse applications—from transporting heavy structural steel across rain-soaked construction sites to managing bulk materials in rugged port terminals where stability remains an ongoing challenge.



Establishing the Need for Specialized Outdoor Equipment

Traditional material handling equipment is limited by its chassis and tire design. On smooth warehouse floors, small solid tires with low ground clearance maximize maneuverability; but upon encountering soft soil, gravel, or uneven rural paths, they lose grip almost instantly—resulting in delayed project timelines and mechanical strain for operators in agriculture, mining, or construction fields.

As an industry-leading provider of Rough Terrain Forklift Solutions, LTMG addresses these environmental obstacles head-on by engineering vehicles that bridge the gap between standard forklifts and all-wheel-drive tractors. By focusing on non-paved surfaces, these machines provide

the oscillation and torque needed to overcome ruts or slopes that would otherwise grind operations to a halt.

Two Distinct Product Families to Match Every Outdoor Application

LTMG's Rough Terrain Forklift lineup is built around two complementary product families, allowing partners to match the right machine to the actual job site rather than forcing a compromise:

Integrated (Forklift-Style) Rough Terrain Forklifts – 2.5 to 4 tons. Built on a traditional forklift configuration but reinforced with a high-clearance chassis, wide-base pneumatic tires, and 4x4 drivetrains, these models suit construction sites, lumber yards, and agricultural operations where

moderate payloads must be moved across uneven ground. Their compact footprint makes them ideal for tight outdoor work zones.

Loader-Style Rough Terrain Forklifts – 1.5 to 25 tons. Engineered on a loader-derived platform with articulated steering and high-output diesel power, this family extends LTMG's capability into truly heavy-duty territory – Smaller variants (1.5–4 tons) excel in landscaping and light construction, while large-tonnage models (up to 25 tons) handle structural steel, prefabricated concrete elements, mining materials, and port-side bulk cargo with ease.

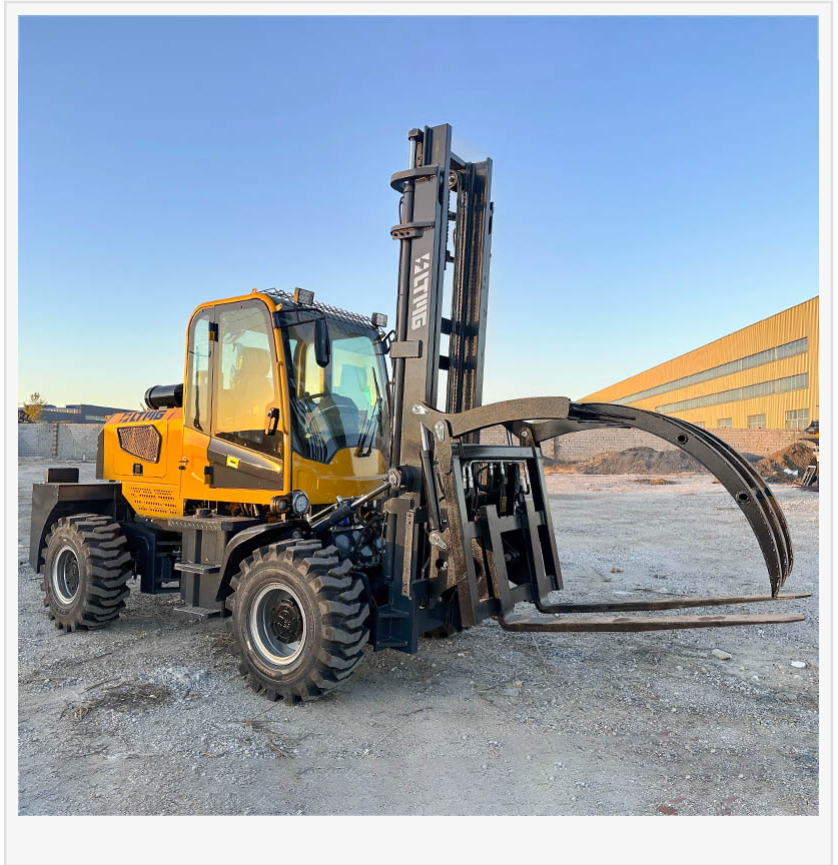
Within this lineup, heavy-tonnage models such as the 10-ton and above units are specifically designed to accommodate significant payloads where ground conditions vary widely. Unlike smaller electric machines, these 4x4 internal combustion units rely on high-output diesel engines to maintain forward progress even when lifting full loads. Gradability is a hallmark of these Rough Terrain Forklift Solutions for Heavy-Duty Working Conditions: capable of climbing gradients of approximately 20%, they move goods up temporary ramps or natural hillsides without issue. The permanent four-wheel-drive system keeps every wheel in contact with the ground, distributing power to the tires with maximum traction—even on diagonal slopes.

Engineered Value Propositions : Built for Rugged Mobility, Operator Safety, and Long Service Life

Rather than separating mobility, durability, and safety into isolated features, LTMG integrates them into a single, cohesive engineering package. The following selling points define why LTMG Rough Terrain Forklifts are trusted on the toughest job sites worldwide:

1. High-Clearance Chassis and Wide-Base Pneumatic Tires

A reinforced high-clearance chassis shields the undercarriage from rocks and debris impact. Deep-tread, wide-base pneumatic tires deliver the mechanical grip required in mud or gravel



while doubling as natural shock absorbers, protecting both the hydraulic system and the operator from harsh vibration.

2.Reinforced Axles and Heavy-Duty Drivetrain

Instead of automotive-style axles, LTMG specifies dedicated wheel-side reduction axles paired with limited-slip differentials, distributing torque evenly and mitigating sudden traction changes—essential for long service life on broken or sloped surfaces.

3.Expanded-Angle Mast for Load Stability

Uneven outdoor terrain causes load shift during transport. LTMG masts feature expanded tilt angles—typically 8° forward and 10° backward—keeping the load's center of gravity closer to the machine and substantially reducing the risk of load loss or tipping.

4.Powerful Diesel Powertrain with Cold-Start Capability

High-output diesel engines, paired with optional pre-heating systems, deliver consistent torque whether operating in tropical humidity or sub-zero alpine conditions.

5.FOPS and ROPS Operator Protection

Falling Object Protective Structures (FOPS) and Roll-Over Protective Structures (ROPS) are available as optional configurations, allowing clients to meet international safety expectations for mining, demolition, and forestry environments where overhead and ground hazards are routine.

6.Ergonomic Operator Cabin with All-Round Visibility

Anti-vibration seats, adjustable steering columns, and panoramic glazing reduce operator fatigue during long shifts and improve sight lines around loads.

7.Sealed Hydraulics and Anti-Corrosion Treatment

Sealed hydraulic lines, corrosion-resistant coatings, and protected wiring harnesses extend service life in salt-air, dust-laden, or wet environments.

8.Easy-Access Maintenance Design

Tilting hoods, modular service panels, and standardized component layouts shorten routine maintenance cycles—critical when machines operate far from urban repair networks.

Together, these features give the LTMG Rough Terrain Forklift its reputation for combining raw lifting power with the structural resilience and safety expected from premium construction-grade equipment.

Adaptive Configurations for Global Work Environments

A key challenge of global supply chains is adapting configurations to suit local work environments. "Harsh conditions" vary greatly across regions: for a project in an alpine mountain range, oxygen levels and cold temperatures affect engine performance while humidity and salt air accelerate corrosion in tropical ports. At LTMG we offer tailored forklift solutions such as hydraulic oil coolers for high heat environments or preheating systems for extreme cold environments, among other customization options.

These machines further extend their utility with attachments from LTMG, such as fork positioners or clamps specifically tailored for timber and pipe projects. Standard forks alone may not suffice when dealing with irregular materials found in forestry or infrastructure projects, so being able to switch out forks for side shifters, fork positioners or clamps for timber and piping ensures that equipment remains multipurpose rather than becoming an exclusive tool. LTMG's

philosophy embodies this flexibility by offering one-stop ODM and OEM service tailored towards meeting end user's functional needs.

Field Validation and Service Support

A machine's performance only matters as much as its reliability in practice, which LTMG has demonstrated through various international projects - particularly heavy-duty operations in places like Papua New Guinea with challenging terrain - where the equipment continues to operate reliably despite mud and steep inclines, providing evidence of its emphasis on engineering durability rather than aesthetic complexity.

For machines operating in remote locations, LTMG maintains an international service network consisting of over 20 overseas after-sales centers. Recognizing the expense involved with downtime at remote mine or construction sites is exorbitant, the company provides a 12-month or 2,000-hour warranty with rapid spare parts delivery system as part of this infrastructure ensuring even when working thousands of miles from major cities; rough terrain forklift solutions for heavy duty working conditions will always have technical support on hand to back them up.

Engineering Reliability into Every Lift

Selecting equipment for outdoor logistics depends heavily on the specific demands of any given job site. While standard forklifts may suffice in warehouse environments, their lack of structural "DNA" makes them unsuited for demanding engineering projects. Since 2001, LTMG Machinery Group Co. Ltd. has spent two decades perfecting a balance between lifting power and off-road mobility to serve outdoor logistics operations effectively.

Rugged terrain forklift solutions by LTMG provide businesses operating in harsh outdoor conditions with tailored tools designed to withstand even the toughest environments, offering targeted solutions for moving heavy materials where pavement stops. The value lies in LTMG's customized design; by combining intelligent manufacturing processes with in-depth supply chain knowledge, these forklifts provide solutions designed to stand the test of time.

For more information about LTMG full selection of equipment and technical services, visit LTMG: <https://www.ltmg.com/>.

LTMG Machinery Group Co. Ltd.

LTMG Machinery Group Co. Ltd.

+86 173 5001 5962

[email us here](#)

Visit us on social media:

[LinkedIn](#)

[Instagram](#)

[Facebook](#)

[YouTube](#)

[TikTok](#)

This press release can be viewed online at: <https://www.einpresswire.com/article/923465307>

EIN Presswire's priority is source transparency. We do not allow opaque clients, and our editors try to be careful about weeding out false and misleading content. As a user, if you see something we have missed, please do bring it to our attention. Your help is welcome. EIN Presswire, Everyone's Internet News Presswire™, tries to define some of the boundaries that are reasonable in today's world. Please see our Editorial Guidelines for more information.

© 1995-2026 Newsmatics Inc. All Right Reserved.